

WAAS CH <b>93839</b> <b>W28E</b>	APP CRS <b>275°</b>	Rwy Idg TDZE Apt Elev	<b>7500</b> <b>667</b> <b>680</b>
--	------------------------	-----------------------------	---

(CLOSE PARALLEL)  
CHICAGO O'HARE INTL (ORD)

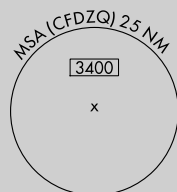
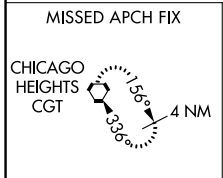
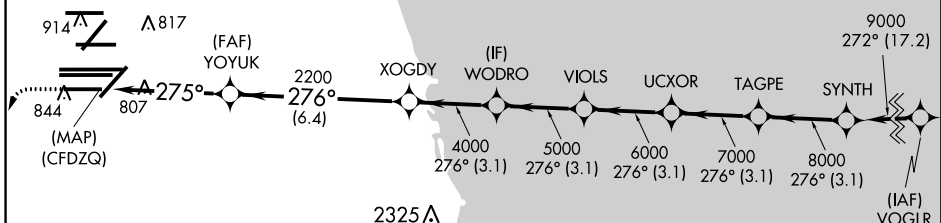
RNP APCH. RADAR required.  
 ▼ For uncompensated Baro-VNAV systems, LNAV/VNAV NA below -19°C or above 54°C. Simultaneous approach authorized. Use of FD or AP required during simultaneous operations. Dual VHF comm required. See additional requirements on AAUP.

ALSIF-2  
 MISSED APPROACH: Climb to 1200 then climbing left turn to 4000 direct CGT VORTAC and hold.

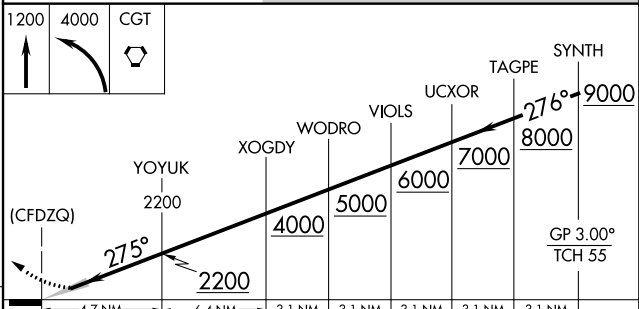
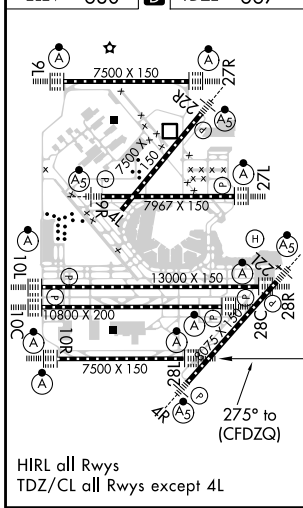
D-ATIS <b>135.4</b> <b>282.225</b>	CHICAGO APP CON <b>119.0 292.125</b>	O'HARE TOWERS <b>128.15 348.0</b> (Rwy 9L/27R) <b>133.0 348.0</b> (10R/28L) <b>120.75 121.15 126.9 132.7 348.0</b> (CENTER)	GND CON (TWR CENTER) <b>124.125</b> 118.05 (TWR NORTH) 118.05 (TWR SOUTH) 226.675 (ALL TWRS)	(TWR CENTER) (OBND) <b>121.75</b> 121.9 (IBND)
--	---	---	--	--

CLNC DEL <b>121.6</b>	CPDLC
--------------------------	-------

Final approach course offset 2.50°.



ELEV 680	D	TDZE 667
----------	---	----------



CATEGORY	A	B	C	D
LPV DA		917/24	250 (300-½)	
LNAV/VNAV DA		1090/40	423 (500-¾)	

EC-3, 28 MAR 2019 to 25 APR 2019

EC-3, 28 MAR 2019 to 25 APR 2019