

# RNAV (RNP) Y RWY 27L

CHICAGO O'HARE INTL (ORD)

APP CRS <b>273°</b>	Rwy Idg <b>7782</b>
	TDZE <b>654</b>
	Apt Elev <b>680</b>

▼ For uncompensated Baro-VNAV systems, procedure NA below -19°C (-2°F) or above 54°C (130°F). Simultaneous approach authorized. GPS required. Use of FD or AP providing RNAV track guidance required during simultaneous operations.

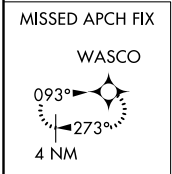
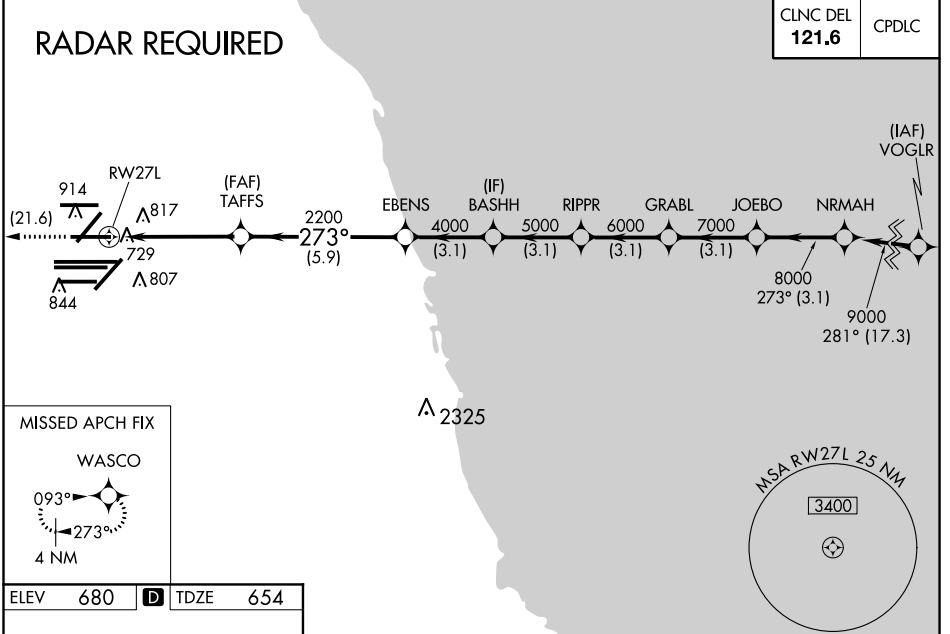


MISSED APPROACH:  
Climb to 4000 on track 273° to WASCO and hold.

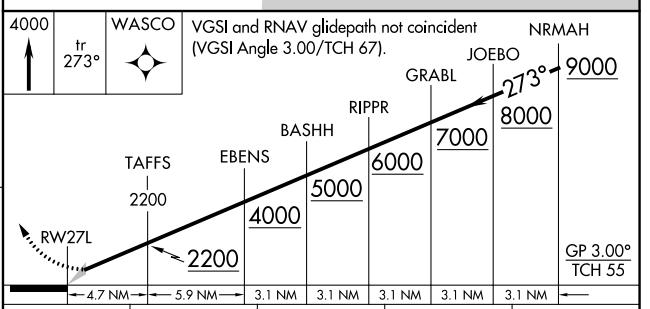
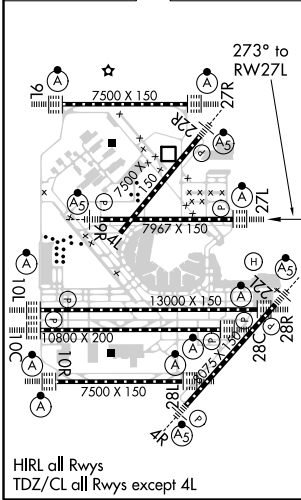
D-ATIS <b>135.4</b>	CHICAGO APP CON <b>119.0 292.125</b>	O'HARE TOWERS <b>128.15 348.0</b> (Rwy 9L/27R) <b>133.0 348.0</b> (10R/28L) <b>120.75 121.15 126.9 132.7 348.0</b> (CENTER)	GND CON (TWR NORTH) <b>124.125</b>	(TWR CENTER) <b>121.75</b> (OBND)
<b>282.225</b>			(TWR SOUTH) <b>118.05</b>	(IBND) <b>121.9</b>
			(ALL TWS) <b>226.675</b>	

## RADAR REQUIRED

CLNC DEL <b>121.6</b>	CPDLC
--------------------------	-------



ELEV <b>680</b>	<b>D</b>	TDZE <b>654</b>
-----------------	----------	-----------------



CATEGORY	A	B	C	D
RNP 0.15 DA		992/30	338 (400-%)	
RNP 0.30 DA		1162-1¼	508 (500-1¼)	

## AUTHORIZATION REQUIRED

EC-3, 28 MAR 2019 to 25 APR 2019

EC-3, 28 MAR 2019 to 25 APR 2019