

WAAS CH 65837 W28D	APP CRS 273°	Rwy Idg TDZE Apt Elev	7500 667 680
--	------------------------	-----------------------------	---

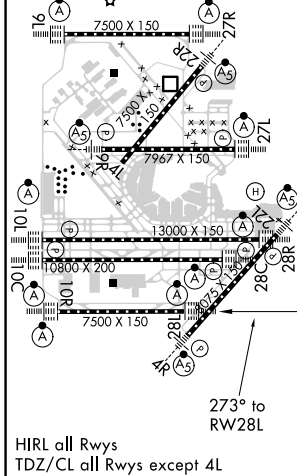
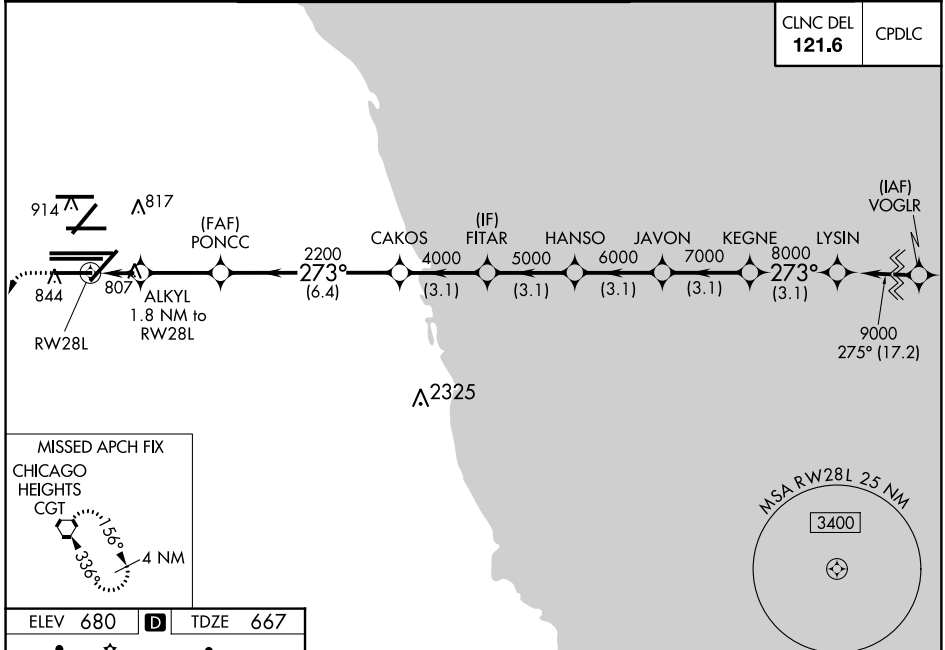
RNAV (GPS) Z RWY 28L

CHICAGO-O'HARE INTL (ORD)

RNP APCH.	ALSF-2	MISSED APPROACH: Climb 1200 then climbing left turn to 4000 direct CGT VORTAC and hold.
▼ Simultaneous approach authorized. LNAV procedure NA during simultaneous operations. For uncompensated Baro-VNAV systems, LNAV/VNAV NA below -19C or above 54C. Use of FD or AP required during simultaneous operations.		

D-ATIS 135.4	CHICAGO APP CON 119.0 292.125	O'HARE TOWERS 128.15 348.0 (Rwy 9L/27R) 133.0 348.0 (10R/28L) 126.9 121.15 126.9 132.7 348.0 (CENTER)	GND CON (TWR NORTH) 124.125 (TWR SOUTH) 118.05 (ALL TWRs) 226.675	(TWR CENTER) 121.75 (OBND) 121.9 (IBND)
------------------------	--	---	---	---

CLNC DEL 121.6	CPDLC
--------------------------	-------



ELEV 680	D	TDZE 667							
1200 4000 CGT *LNAV only. ALKYL 1.8 NM to RWY 28L *1.1 NM to RWY 28L RWY 28L *1280 2200 GP 3.00° TCH 55									
1.1 NM	0.7	2.9 NM	6.4 NM	3.1 NM	3.1 NM	3.1 NM	3.1 NM	3.1 NM	---
CATEGORY	A		B		C		D		
LPV DA	867/18		200 (200-1/2)						
LNAV/VNAV DA	1090/40		423 (500-3/4)						
LNAV MDA	1060/24		393 (400-1/2)		1060/35		393 (400-5/8)		

EC-3, 28 MAR 2019 to 25 APR 2019

EC-3, 28 MAR 2019 to 25 APR 2019