

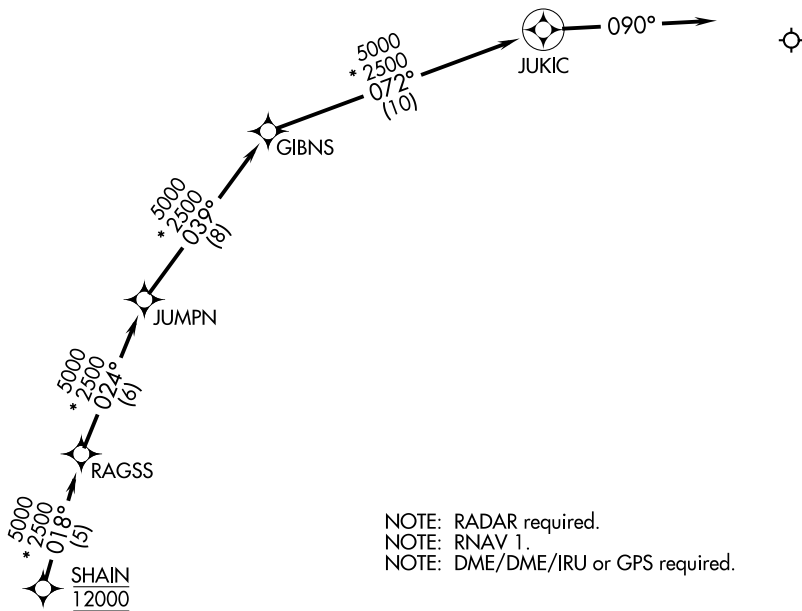
(SHAIN.SHAIN1) 19003

AL-166

CHICAGO O'HARE INTL (ORD)
CHICAGO, ILLINOIS

SHAIN ONE ARRIVAL (RNAV) Arrival Routes

D-ATIS
135.4 282.225
CHICAGO APP CON
119.0 292.125



NOTE: RADAR required.
NOTE: RNAV 1.
NOTE: DME/DME/IRU or GPS required.

NOTE: Chart note to scale.

ARRIVAL ROUTE DESCRIPTION

LANDING RWYS 9L/R, 10L/C/R: From SHAIN on track 018° to RAGSS, then on track 024° to JUMPN, then on track 039° to GIBNS, then on track 072° to JUKIC, then on track 090°. Expect RADAR vectors to final approach course.

SHAIN ONE ARRIVAL (RNAV) Arrival Routes

(SHAIN.SHAIN1) 15OCT15

CHICAGO, ILLINOIS
CHICAGO O'HARE INTL (ORD)

EC-3, 28 MAR 2019 to 25 APR 2019

EC-3, 28 MAR 2019 to 25 APR 2019