

# KAYOH SEVEN ARRIVAL

AL-236 (FAA)

LONG BEACH, CALIFORNIA

SW-3, 28 MAR 2019 to 25 APR 2019

## ARRIVAL ROUTE DESCRIPTION

**HECTOR TRANSITION (HEC.KAYOH7):** From over HEC VORTAC on HEC R-211 to BULGY INT then on R-211 and PDZ R-030 to DAWNA INT, then on HDF R-353 to HDF VOR, then on HDF R-257 to FRETS INT, then on HDF R-257 and SLI R-075 to KAYOH INT. Thence. . .

**PALM SPRINGS TRANSITION (PSP.KAYOH7):** From over PSP VORTAC on PSP R-260 to BANDS INT, then on HDF R-054 to HDF VOR, then on HDF R-257 to FRETS INT, then on HDF R-257 and SLI R-075 to KAYOH INT. Thence. . .

. . . from over KAYOH on SLI R-075 to JOGIT INT, then on SLI R-075 to SLI VORTAC, expect RADAR vectors to final approach course.

- SOCAL APP CON 133.85 346.35
- FULLERTON MUNI ATIS 125.05
- LONG BEACH/DAUGHERTY FIELD ATIS 127.75
- JOHN WAYNE AIRPORT-ORANGE COUNTY D-ATIS 126.0
- TORRANCE MUNI ATIS 125.6

**POMONA**  
110.4 POM  
Chan 41

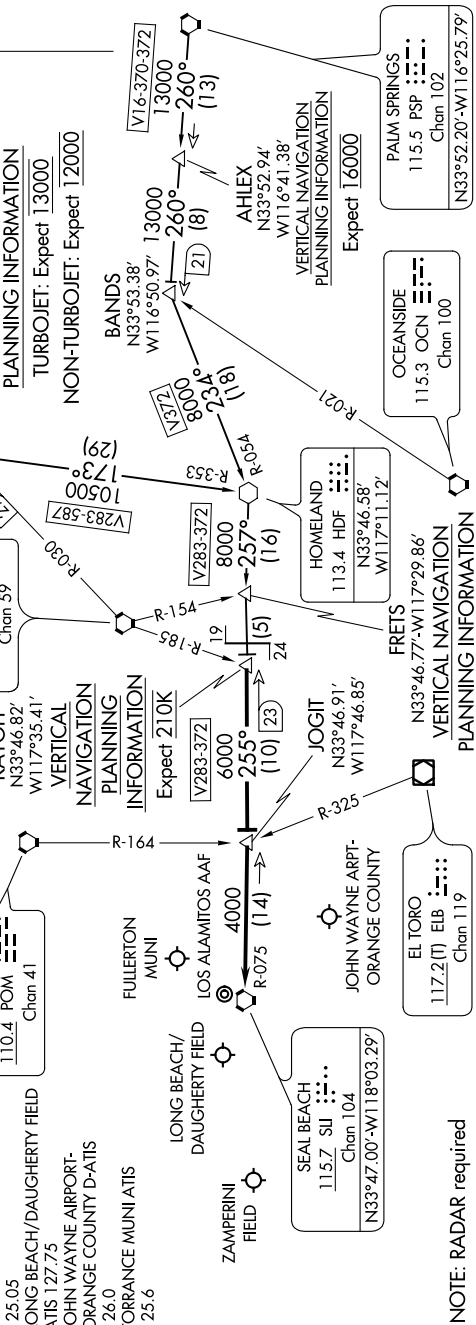
**KAYOH**  
N33°46.82'  
W117°35.41'  
VERTICAL NAVIGATION  
PLANNING INFORMATION  
Expect 210K  
V283-372

**PARADISE**  
112.2 PDZ  
Chan 59

**DAWNA**  
N34°15.90'-W117°06.78'  
VERTICAL NAVIGATION  
PLANNING INFORMATION  
TURBOJET: Expect 3000  
NON-TURBOJET: Expect 12000

**BANDS**  
N33°53.38'  
W116°50.97'  
VERTICAL NAVIGATION  
PLANNING INFORMATION  
Expect 16000

**HECTOR**  
112.7 HEC  
Chan 74  
N34°47.82'  
W116°27.78'  
L7, H4



NOTE: RADAR required  
NOTE: Chart not to scale.

# KAYOH SEVEN ARRIVAL

LONG BEACH, CALIFORNIA

SW-3, 28 MAR 2019 to 25 APR 2019