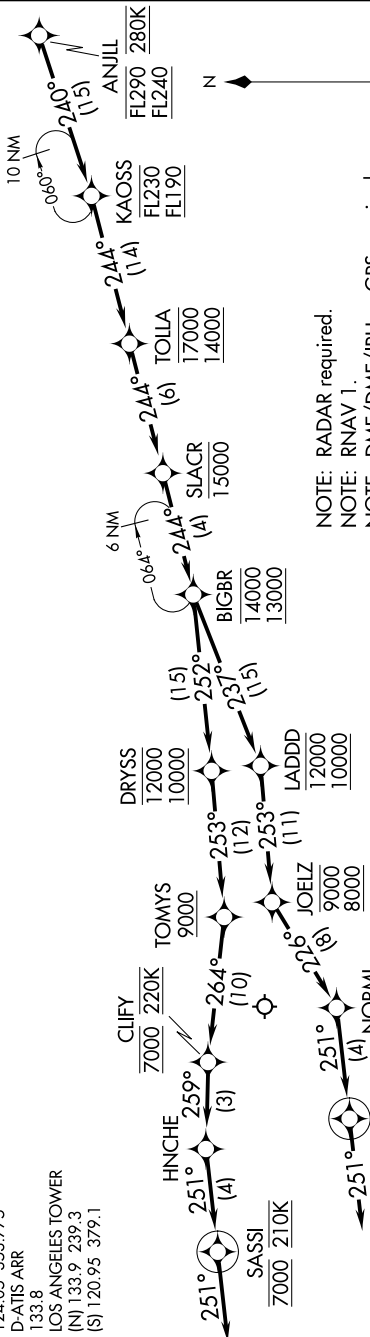


BIGBR THREE ARRIVAL (RNAV) Arrival Routes

SW-3, 28 MAR 2019 to 25 APR 2019

SOCAL APP CON
124.05 353.775
D-ATIS ARR
133.8
LOS ANGELES TOWER
(N) 133.9 239.3
(S) 120.95 379.1



NOTE: RADAR required.
 NOTE: RNAV 1.
 NOTE: DME/DME/IRU or GPS required.
 NOTE: Turbojet aircraft only.
 NOTE: Los Angeles landing east traffic.
 NOTE: Expect runway 7R unless otherwise assigned.
 NOTE: Expect local area altimeter reaching FL230.

NOTE: Chart not to scale.

ARRIVAL ROUTE DESCRIPTION

From ANJLL on track 240° to cross KAOSS between FL190 and FL230, then on track 244° to cross TOILA between 14000 and 17000, then on track 244° to cross SLACR at or below 15000, then on track 244° to cross BIGBR between 13000 and 14000.

LANDING RUNWAYS 6L/R: From BIGBR on track 252° to cross DRYSS between 10000 and 12000, then on track 253° to cross TOMYS at or above 9000, then on track 264° to cross CLIFY at 7000 and at 220K, then on track 259° to HNCHE, then on track 251° to cross SASSI at 7000 and at 210K, then on track 251°. Expect RADAR vectors to ILS or RNAV (RNP) RWY 6L final approach course.

LANDING RUNWAYS 7L/R: From BIGBR on track 237° to cross LADDD between 10000 and 12000, then on track 253° to cross JOELZ between 8000 and 9000, then on track 226° to cross NORML at or above 6000 and at 220K, then on track 251° to cross WNDFL at 6000 and at 210K, then on track 251°. Expect RADAR vectors to ILS or RNAV (RNP) RWY 7R final approach course.

LOST COMMUNICATIONS: In the event of lost communication proceed on the RNAV (RNP) RWY 7R or ILS or LOC RWY 7R approach.

BIGBR THREE ARRIVAL (RNAV) Arrival Routes

SW-3, 28 MAR 2019 to 25 APR 2019