

(CHATY5.CHATY) 17229  
**CHATY FIVE DEPARTURE**

AL-237 (FAA)

LOS ANGELES INTL (LAX)  
 LOS ANGELES, CALIFORNIA

SW-3, 28 MAR 2019 to 25 APR 2019

**TOP ALTITUDE:  
 ASSIGNED BY ATC**

D-ATIS DEP 135.65  
 CLNC DEL 120.35 327.0  
 CPDLC GND CON  
 (N) 121.65 327.0  
 (S) 121.75 327.0  
 (W) 121.4 327.0  
 LOS ANGELES TOWER (N) 133.9 239.3  
 (S) 120.95 379.1  
 SOCIAL DEP CON 124.3 363.2 [045°-224°]  
 125.2 263.025 [225°-044°]

GORMAN  
 116.1 GMIN  
 Chan 108  
 N34°48.24'-W118°51.68'  
 L-3-4-7, H-4

SAN MARCUS  
 114.9 RZS  
 Chan 96  
 N34°30.57'-W119°46.26'  
 L-3-4-7, H-4

FILLMORE  
 112.5 FIM  
 Chan 72  
 N34°21.40'-W118°52.88'

OHIOH  
 N34°25.88'  
 W119°18.65'  
 L-3-4-7

GAVIOTA  
 GVO  
 Chan 85  
 113.8 GVO

KWANG  
 N34°18.55'  
 W119°30.85'  
 L-3-4-7

DEANO  
 N34°19.00'  
 W119°24.99'

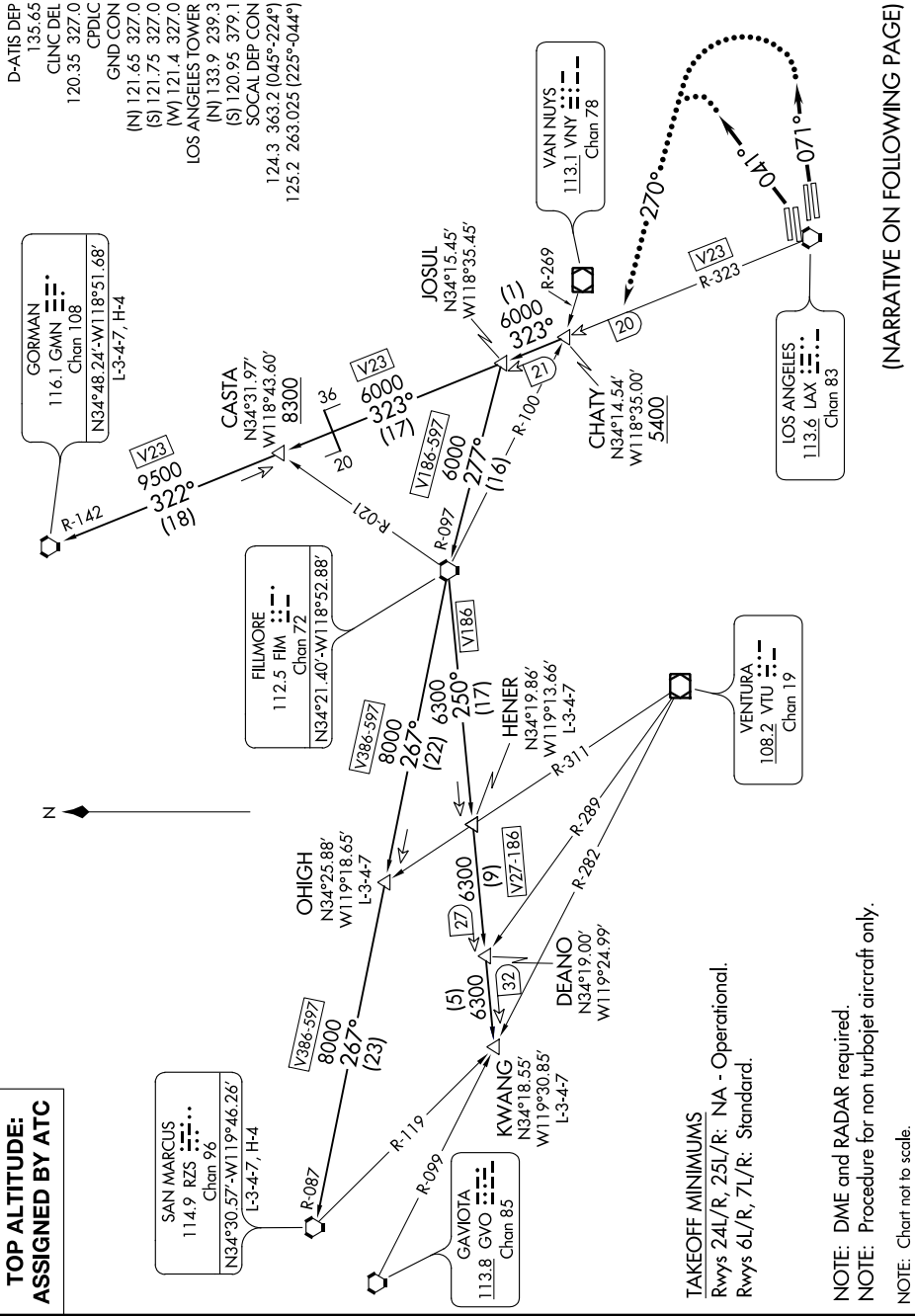
HENER  
 N34°19.86'  
 W119°13.66'  
 L-3-4-7

VENTURA  
 108.2 VTU  
 Chan 19

JOSUL  
 N34°15.45'  
 W118°35.45'

VANNIUVS  
 113.1 VNY  
 Chan 78

LOS ANGELES  
 113.6 LAX  
 Chan 83



**TAKEOFF MINIMUMS**

Rwys 24L/R, 25L/R: NA - Operational.  
 Rwys 6L/R, 7L/R: Standard.

**NOTE: DME and RADAR required.**  
**NOTE: Procedure for non turboprop aircraft only.**

**NOTE: Chart not to scale.**

(NARRATIVE ON FOLLOWING PAGE)

(CHATY5.CHATY) 27APR17  
**CHATY FIVE DEPARTURE**

LOS ANGELES, CALIFORNIA  
 LOS ANGELES INTL (LAX)

SW-3, 28 MAR 2019 to 25 APR 2019