

# DARRK TWO DEPARTURE (RNAV)

AL-237 (FAA)

LOS ANGELES INTL (LAX)  
LOS ANGELES, CALIFORNIA

SW-3, 28 MAR 2019 to 25 APR 2019

**TOP ALTITUDE:**  
**FL230**

### TAKEOFF MINIMUMS

Rwys 6L/R, 7L/R: NA - ATC.

Rwys 24L/R, 25L/R: Standard with a minimum climb of 500' per NM to 640'.

D-ATIS DEP 135.65  
CLNC DEL 120.35 327.0  
CPDLC  
GND CON  
(N) 121.65 327.0  
(S) 121.75 327.0  
(W) 121.4 327.0  
LOS ANGELES TOWER  
(N) 133.9 239.3  
(S) 120.95 379.1  
SOCAL DEP CON  
(S) 124.3 363.2 (045°-224°)  
125.2 263.025 (225°-044°)

NOTE: RNAV 1.

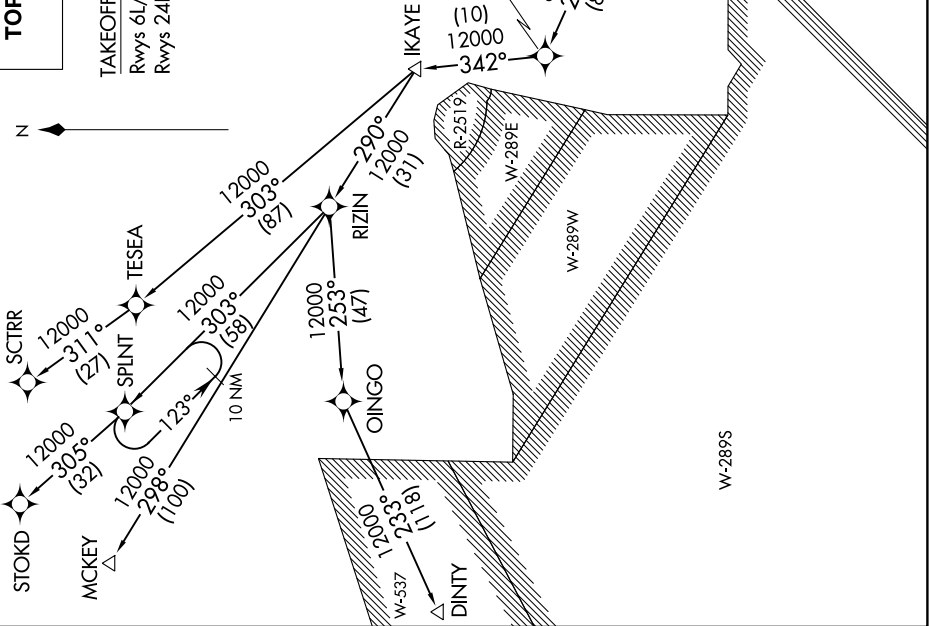
NOTE: RADAR required.

NOTE: STOKD, SCTRR and MCKEY transitions:

DME/DME/IRU or GPS required.

NOTE: DINTY transitions: GPS only.

NOTE: Turbojet aircraft only.



(NARRATIVE ON FOLLOWING PAGE)

NOTE: Chart not to scale.

SW-3, 28 MAR 2019 to 25 APR 2019

# DARRK TWO DEPARTURE (RNAV)

LOS ANGELES, CALIFORNIA  
LOS ANGELES INTL (LAX)