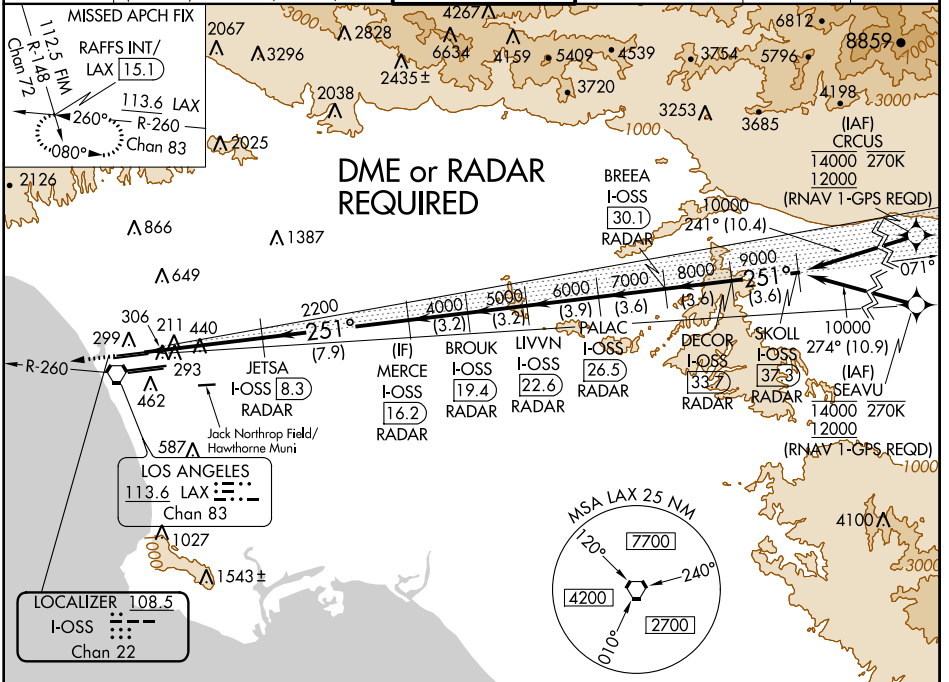


LOC/DME I-OSS 108.5 Chan 22	APP CRS 251°	Rwy Idg TDZE Apt Elev	8925 122 128
--	------------------------	-----------------------------	---

ILS RWY 24R (CAT II & III)

LOS ANGELES INTL (LAX)

D-ATIS ARR 133.8 DEP 135.65	SOCAL APP CON 124.3 363.2 (APCH FM WEST)		LOS ANGELES TOWER N 133.9 239.3 S 120.95 379.1		GND CON N 121.65 327.0 S 121.75 327.0 W 121.4 327.0	CLNC DEL 120.35 327.0	CPDLC
	124.5 235.975 (225°-044°)		124.9 269.0 (090°-224°) 128.5 360.7 (045°-089°)				



ELEV 128	TDZE 122	2000	LAX R-260	RAFFS INT	VGSI and ILS glidepath not coincident (VGSI Angle 3.00/TCH 73).	SKOLL I-OSS 37.3 RADAR
		hdg 251°			BREA I-OSS 30.1 RADAR	DECOR I-OSS 33.7 RADAR
			JETSA I-OSS 8.3 RADAR	MERCE I-OSS 19.4 RADAR	LIVVN I-OSS 22.6 RADAR	PALAC I-OSS 26.5 RADAR
					BREA I-OSS 30.1 RADAR	DECOR I-OSS 33.7 RADAR
					2200	4000 5000 6000 7000 8000 9000 10000
					GS 3.00°	TCH 55
					1025'	6.4 NM 7.9 NM 3.2 NM 3.2 NM 3.9 NM 3.6 NM 3.6 NM 3.6 NM
					CATEGORY	A B C D
					S-ILS 24R	CAT II RA 118/12 100 DA 222
					S-ILS 24R	CAT III RVR 06

TDZ/CL Rwy 6R, 7L, 24R, and 25L
HIRL all Rwy

LOS ANGELES, CALIFORNIA
Amdt 26 12OCT17

LOS ANGELES INTL (LAX)
33°57'N-118°24'W

ILS RWY 24R (CAT II & III)

SW-3, 28 MAR 2019 to 25 APR 2019

SW-3, 28 MAR 2019 to 25 APR 2019