

LOC/DME I-FCN 111.1 Chan 48	APP CRS 251°	Rwy Idg TDZE Apt Elev	25R 11134 104 128	25L 11095 104 128
---	------------------------	-----------------------------	---	---

ILS or LOC RWY 25R

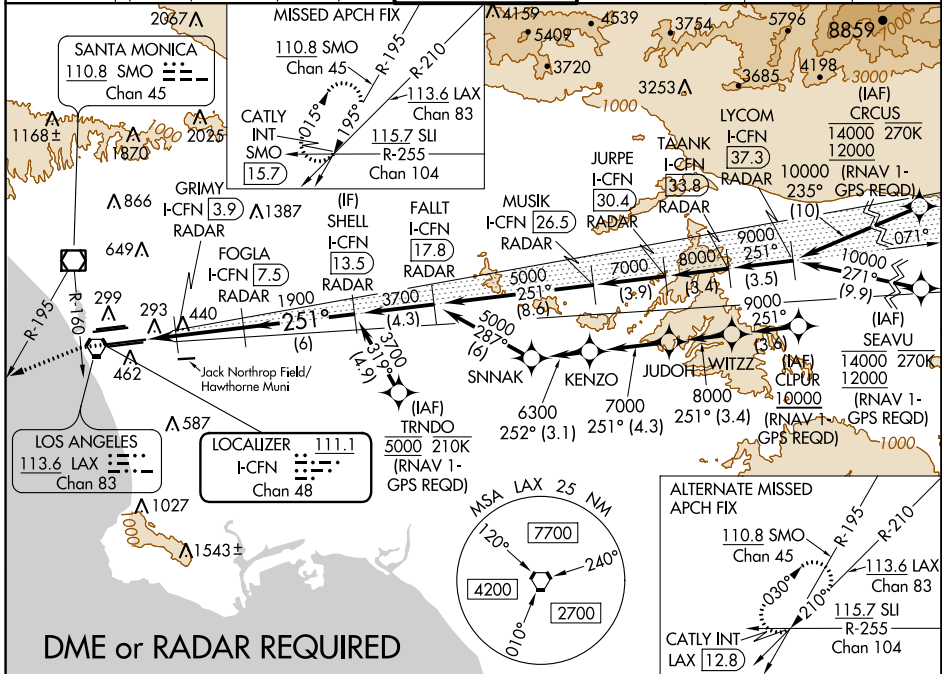
LOS ANGELES INTL (LAX)

Simultaneous approach authorized.
 Simultaneous approach authorized with HHR.
 DME or RADAR required. For inop ALS increase Sidestep 25L
 Cat C visibility to 1½ SM.
 # RVR 1800 authorized with use of FD or AP or HUD to DA.



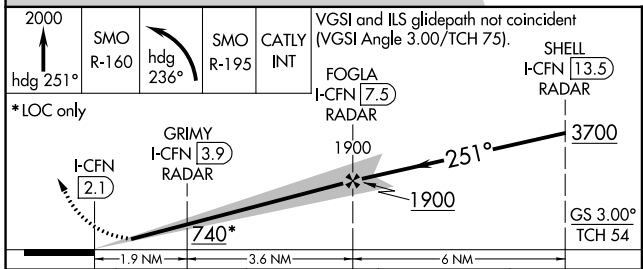
MISSED APPROACH: Climb to 2000 on heading 251° until crossing SMO R-160 then left turn on heading 236° and SMO VOR/DME R-195 to CATLY INT/SMO 15.7 DME and hold.

D-ATIS ARR 133.8 DEP 135.65	SOCAL APP CON [APCH FM WEST] 124.3 363.2 [225°-044°]	124.9 269.0 [090°-224°]	128.5 360.7 [045°-089°]	LOS ANGELES TOWER N 133.9 239.3 S 120.95 379.1	GND CON N 121.65 327.0 S 121.75 327.0 W 121.4 327.0	CLNC DEL 120.35 327.0	CPDLC
---	--	-----------------------------------	-----------------------------------	--	---	---	-------

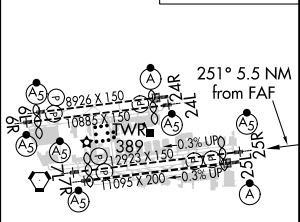


SW-3, 28 MAR 2019 to 25 APR 2019

SW-3, 28 MAR 2019 to 25 APR 2019



ELEV 128	TDZE 25R 104	TDZE 25L 104
----------	--------------	--------------



CATEGORY	A	B	C	D
S-ILS 25R#	304/24 200 (200-½)			
S-LOC 25R	700/24 596 (600-½)	700-1¼ 596 (600-1¼)		
SIDESTEP 25L	700/55 596 (600-1)	700-1¼ 596 (600-1¼)	700-1½ 596 (600-1½)	

TDZ/CL Rwy 6R, 7L, 24R, and 25L	HIRL all Rwy
FAF to MAP 5.5 NM	
Knots	60 90 120 150 180
Min:Sec	5:30 3:40 2:45 2:12 1:50