

| | | |
|---|------------------------|--|
| LOC/DME I-UWU 108.5 Chan 22 | APP CRS 071° | Rwy Idg 6L 8566 6R 9748 TDZE 119 116 Apt Elev 128 128 |
|---|------------------------|--|

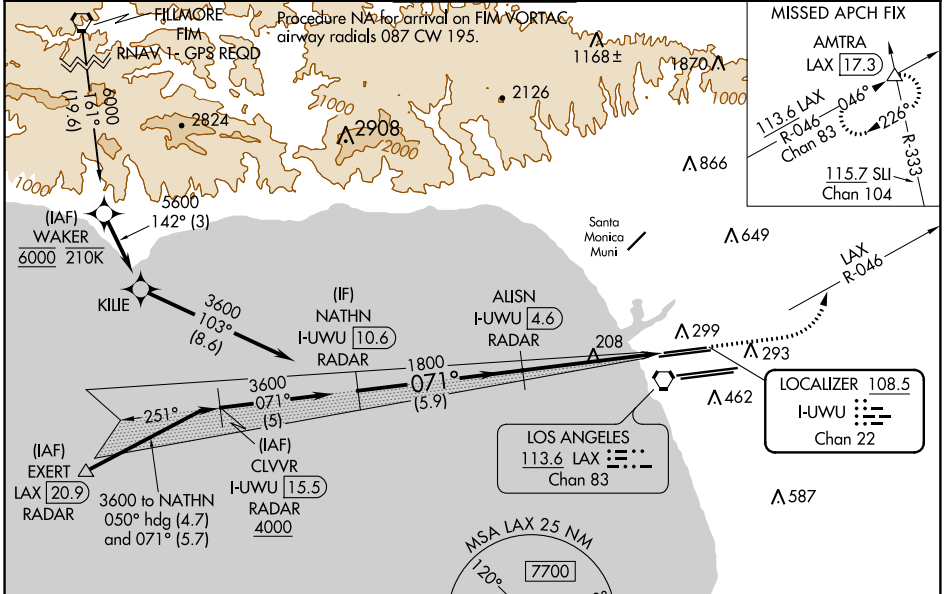
ILS or LOC RWY 6L

LOS ANGELES INTL (LAX)

▼ Inop table does not apply to Sidestep 6R Cats A/B. For inop ALS, increase S-LOC 6L Cat C/D visibility to RVR 5500. Simultaneous approach authorized.

| | | |
|--------------|--------------|---|
| MALSR Rwy 6L | MALSR Rwy 6R | MISSED APPROACH: Climb to 600 then climbing left turn to 3000 on LAX VORTAC R-046 to AMTRA INT/LAX 17.3 DME and hold. |
|--------------|--------------|---|

| | | | | | |
|---|--|--|---|---|-------|
| D-ATIS ARR 133.8 DEP 135.65 | SOCAL APP CON 124.3 363.2 124.9 269.0 (APCH FM WEST) (090°-224°) 124.5 235.975 128.5 360.7 (225°-044°) (045°-089°) | LOS ANGELES TOWER N 133.9 239.3 S 120.95 379.1 | GND CON N 121.65 327.0 S 121.75 327.0 W 121.4 327.0 | CLNC DEL 120.35 327.0 | CPDLC |
|---|--|--|---|---|-------|

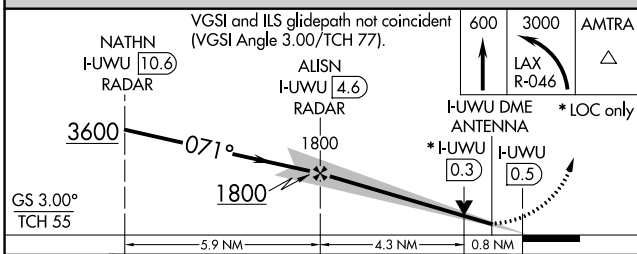


SW-3, 28 MAR 2019 to 25 APR 2019

SW-3, 28 MAR 2019 to 25 APR 2019

Procedure NA for arrivals at EXERT on V25 southwest bound, V27 northwest bound.

DME or RADAR REQUIRED



| | |
|----------|-------------|
| ELEV 128 | TDZE 6L 119 |
| | TDZE 6R 116 |

| | | | | |
|-------------|--------------------|--------------------|---|------------------------|
| CATEGORY | A | B | C | D |
| S-ILS 6L | 369/24 250 (300-½) | | | |
| S-LOC 6L | 460/24 341 (400-½) | 460/30 341 (400-¾) | | |
| SIDESTEP 6R | 460/55 344 (400-1) | | | 460-1½ 344 (400-1½) |

071° 5.1 NM from FAF

TDZ/CL Rwy 6R, 7L, 24R, and 25L
HIRL all Rwy

FAF to MAP 5.1 NM

| | | | | | |
|---------|------|------|------|------|------|
| Knots | 60 | 90 | 120 | 150 | 180 |
| Min:Sec | 5:06 | 3:24 | 2:33 | 2:02 | 1:42 |