

LOC/DME I-GPE 111.7 Chan 54	APP CRS 071°	Rwy Idg TDZE Apt Elev	6R 9748 116 128	6L 8566 119 128
---	------------------------	-----------------------------	---	---

ILS or LOC RWY 6R

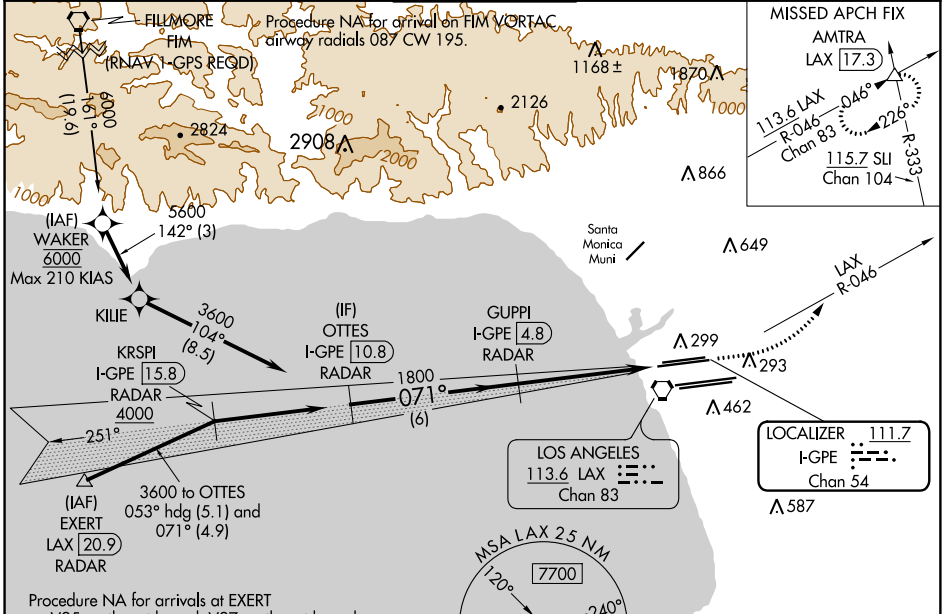
LOS ANGELES INTL (LAX)

Simultaneous approach authorized. For inop ALS, increase S-LOC 6R Cat C/D visibility to RVR 5500. Inop table does not apply to Sidestep 6L Cats A and B.
RVR 1800 authorized with use of FD or AP or HUD to DA.



MISSED APPROACH: Climb to 600 then climbing left turn to 3000 on LAX VORTAC R-046 to AMTRA INT/ LAX 17.3 DME and hold.

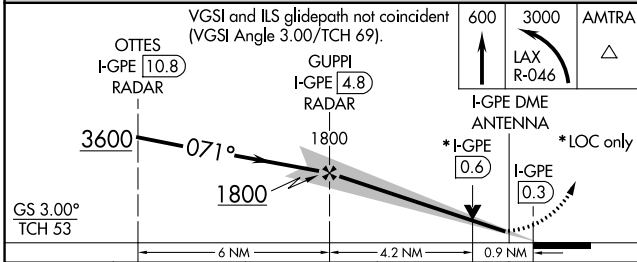
D-ATIS ARR 133.8 DEP 135.65	SOCAL APP CON 124.3 363.2 (APCH FM WEST) 124.5 235.975 (225°-044°)	124.9 269.0 (090°-224°) 128.5 360.7 (045°-089°)	LOS ANGELES TOWER N 133.9 239.3 S 120.95 379.1	GND CON N 121.65 327.0 S 121.75 327.0 W 121.4 327.0	CLNC DEL 120.35 327.0	CPDLC
---	--	--	--	---	---	-------



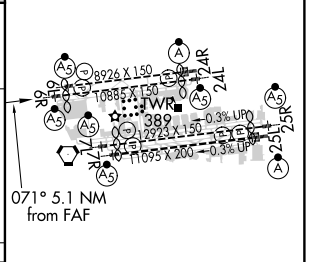
SW-3, 28 MAR 2019 to 25 APR 2019

SW-3, 28 MAR 2019 to 25 APR 2019

DME or RADAR REQUIRED



ELEV 128	TDZE 6R 116	TDZE 6L 119
----------	-------------	-------------



CATEGORY	A	B	C	D
S-ILS 6R#	316/24 200 (200-½)			
S-LOC 6R	460/24 344 (400-½)	460/30 344 (400-¾)		
SIDESTEP 6L	460/55 341 (400-1)			460-1½ 341 (400-1½)

TDZ/CL Rwy 6R, 7L, 24R, and 25L	HIRL all Rwy				
FAF to MAP 5.1 NM					
Knots	60	90	120	150	180
Min:Sec	5:06	3:24	2:33	2:02	1:42