

# LAXX ONE DEPARTURE

AL-237 (FAA)

LOS ANGELES INTL (LAX)  
LOS ANGELES, CALIFORNIA

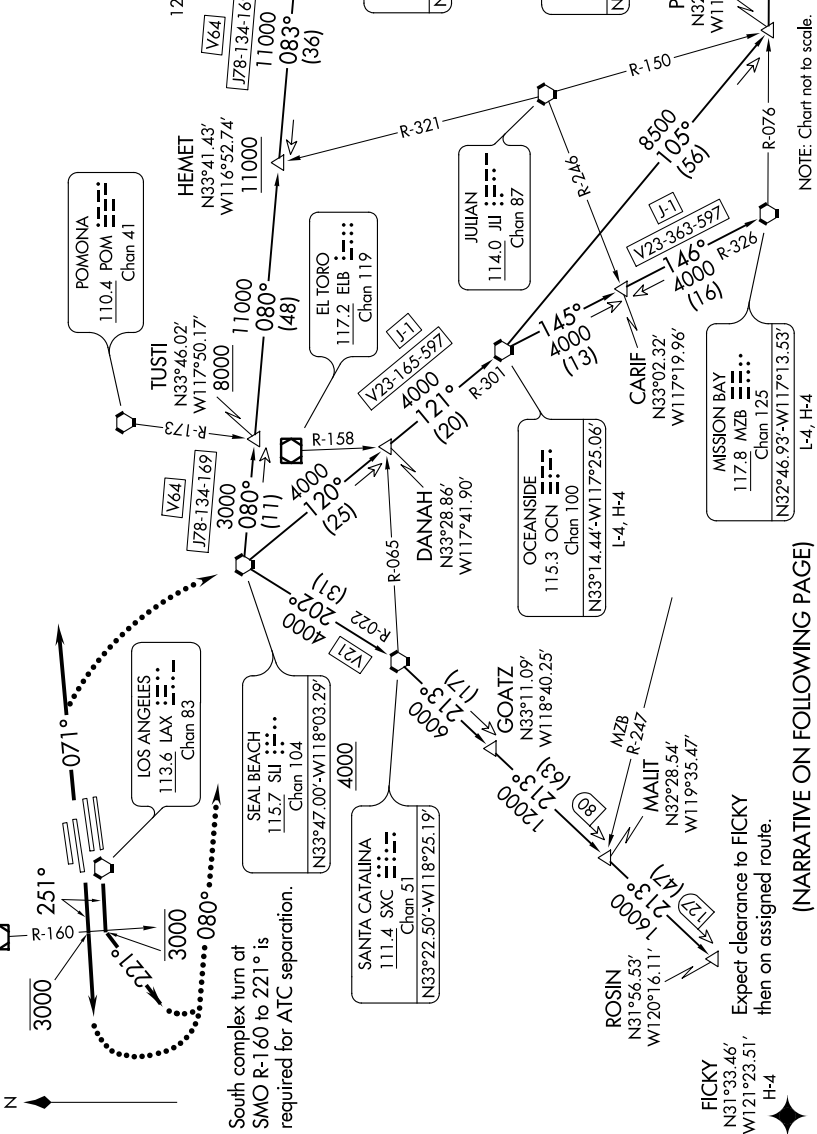
SW-3, 28 MAR 2019 to 25 APR 2019

**TOP ALTITUDE:  
ASSIGNED BY ATC**

**TAKEOFF MINIMUMS**  
Rwy 6L/R, 7L/R, 24L/R, 25L/R: Standard.

**NOTE:** This departure is for turbojet aircraft only.  
**NOTE:** RADAR and DME required.

D-ATIS DEP 135.65  
CLNC DEL 120.35 327.0  
CPDLC  
GND CON  
(N) 121.65 327.0  
(S) 121.75 327.0  
(W) 121.4 327.0  
LOS ANGELES TOWER  
(N) 133.9 239.3  
(S) 120.95 379.1  
SOCAL DEP CON  
124.3 363.2 (045°-224°)  
125.2 263.025 (225°-044°)



NOTE: Chart not to scale.

(NARRATIVE ON FOLLOWING PAGE)

SW-3, 28 MAR 2019 to 25 APR 2019

# LAXX ONE DEPARTURE

LOS ANGELES, CALIFORNIA  
LOS ANGELES INTL (LAX)