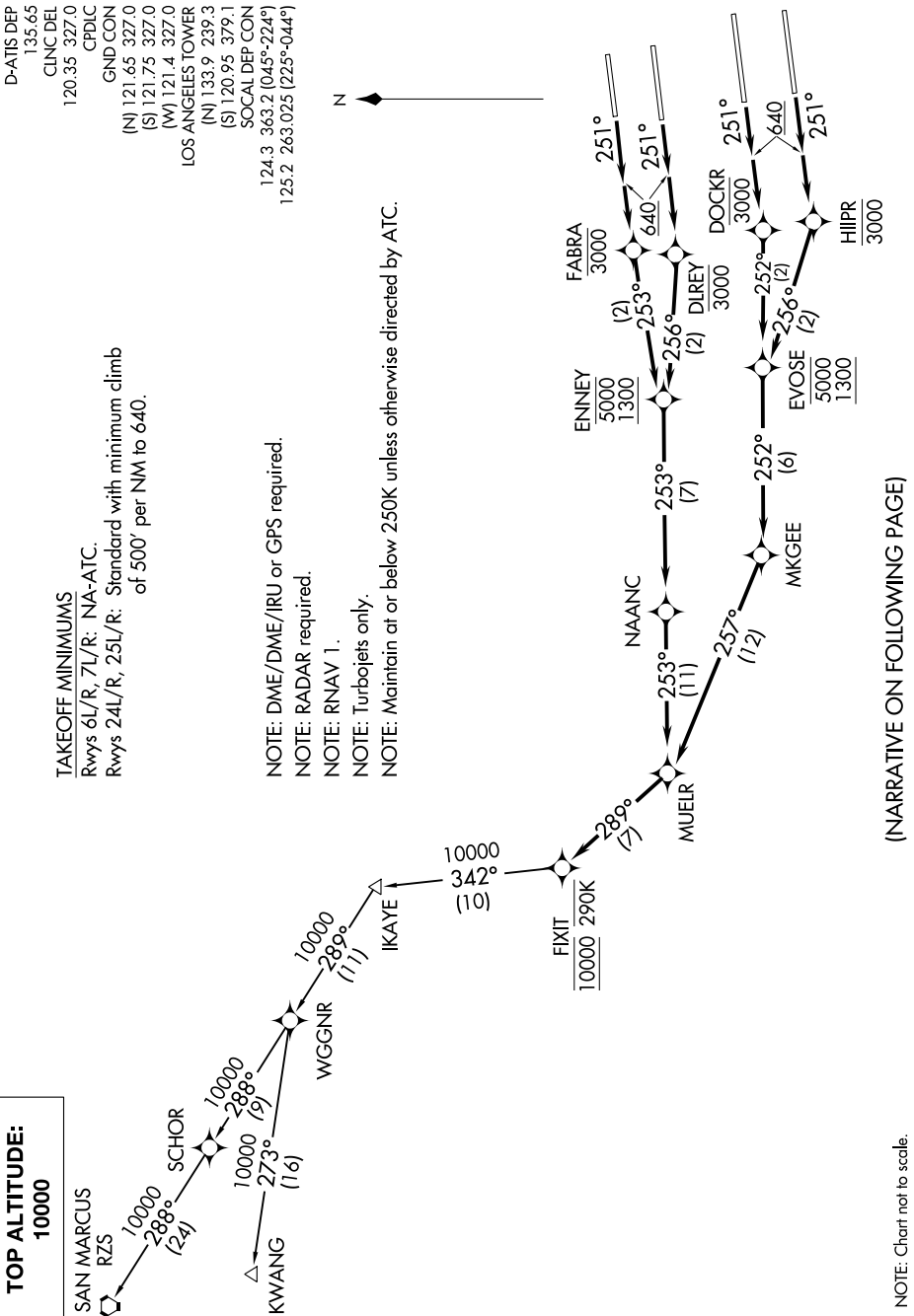


MUEL FOUR DEPARTURE (RNAV)

AL-237 (FAA)

LOS ANGELES INTL (LAX)
LOS ANGELES, CALIFORNIA

SW-3, 28 MAR 2019 to 25 APR 2019



TOP ALTITUDE:
10000

TAKEOFF MINIMUMS
Rwys 6L/R, 7L/R: NA-ATC.
Rwys 24L/R, 25L/R: Standard with minimum climb of 500' per NM to 640.

NOTE: DME/DME/IRU or GPS required.
NOTE: RADAR required.
NOTE: RNAV 1.
NOTE: Turbojets only.
NOTE: Maintain at or below 250K unless otherwise directed by ATC.

MUEL FOUR DEPARTURE (RNAV)

LOS ANGELES, CALIFORNIA
LOS ANGELES INTL (LAX)

(NARRATIVE ON FOLLOWING PAGE)

NOTE: Chart not to scale.

SW-3, 28 MAR 2019 to 25 APR 2019