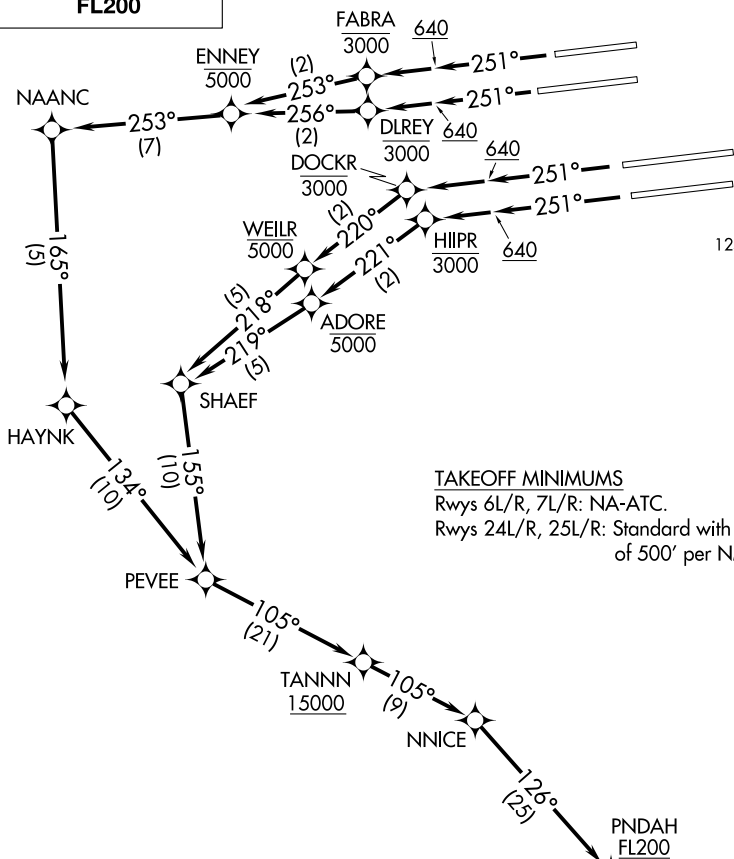


# PNDHA TWO DEPARTURE (RNAV)

AL-237 (FAA)

LOS ANGELES INTL (LAX)  
LOS ANGELES, CALIFORNIA

**TOP ALTITUDE:  
FL200**



D-ATIS DEP	135.65
CLNC DEL	120.35 327.0
CPDLC	GND CON
(N)	121.65 327.0
(S)	121.75 327.0
(W)	121.4 327.0
LOS ANGELES TOWER	(N) 133.9 239.3
(S)	120.95 379.1
SOCAL DEP CON	124.3 363.2 (045°-224°)
	125.2 263.025 (225°-044°)

### TAKEOFF MINIMUMS

Rwys 6L/R, 7L/R: NA-ATC.

Rwys 24L/R, 25L/R: Standard with minimum climb of 500' per NM to 640.

- NOTE: DME/DME/IRU or GPS required.
- NOTE: RADAR required.
- NOTE: RNAV 1.
- NOTE: Turbojet aircraft only.
- NOTE: Turn at HIIPR and DOCKR are required for ATC separation.

(NARRATIVE ON FOLLOWING PAGE)

NOTE: Chart not to scale.

# PNDHA TWO DEPARTURE (RNAV)

LOS ANGELES, CALIFORNIA  
LOS ANGELES INTL (LAX)

SW-3, 28 MAR 2019 to 25 APR 2019

SW-3, 28 MAR 2019 to 25 APR 2019