

| | | |
|-------------|----------|--------------|
| APP CRS | Rwy Idg | 11095 |
| 251° | TDZE | 104 |
| | Apt Elev | 128 |

RNAV (RNP) Z RWY 25L

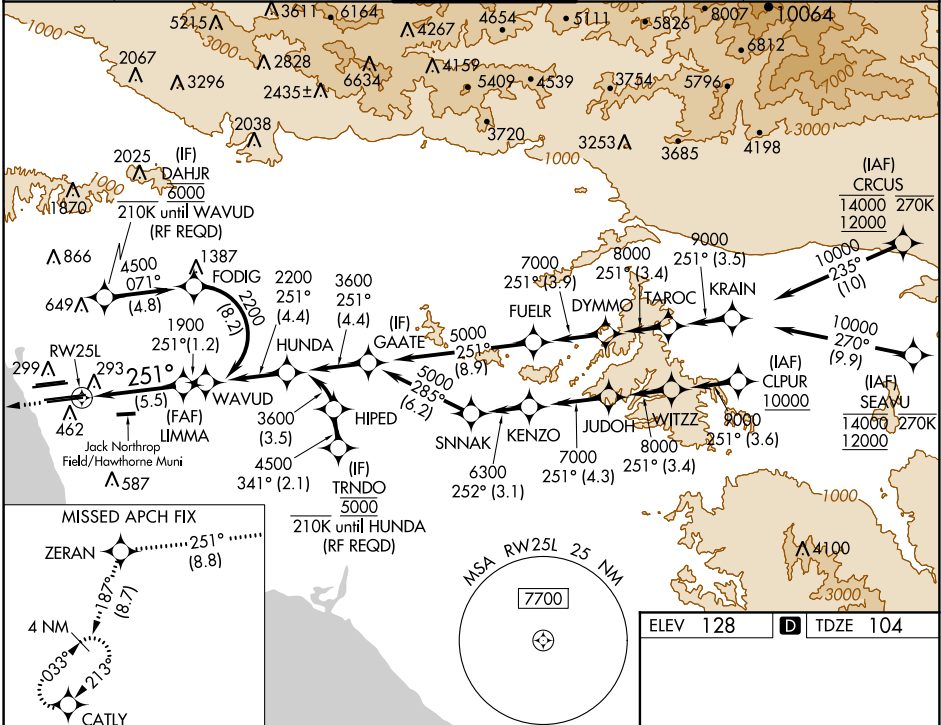
LOS ANGELES INTL (LAX)

For uncompensated Baro-VNAV systems, procedure NA below 5°C (41°F) or above 54°C (130°F).
GPS required. Simultaneous approach authorized.
Simultaneous approach authorized with HHR.

ALSF-2

MISSED APPROACH: Climb to 2000 on track 251° to ZERAN and on track 187° to CATLY and hold.

| | | | | | | |
|-------------------|----------------------|--------------------|-----------------------|-----------------------|---------------|-------|
| D-ATIS | SOCAL APP CON | | LOS ANGELES TOWER | GND CON | CLNC DEL | CPDLC |
| ARR 133.8 | 124.3 363.2 | 124.9 269.0 | N 133.9 239.3 | N 121.65 327.0 | 120.35 | |
| DEP 135.65 | 124.5 235.975 | 128.5 360.7 | S 120.95 379.1 | S 121.75 327.0 | 327.0 | |
| | (225°-044°) | (090°-224°) | | W 121.4 327.0 | | |
| | | (045°-089°) | | | | |



SW-3, 28 MAR 2019 to 25 APR 2019

SW-3, 28 MAR 2019 to 25 APR 2019

| | | | | |
|---|--|--------|-------|--|
| 2000 | ZERAN | tr | CATLY | VGSI and RNAV glidepath not coincident. (VGSI Angle 3.00/TCH 70). |
| ↑ | ✧ | 187° | ✧ | WAVUD |
| tr 251° | | | | LIMMA |
| See planview for multiple IF locations. | | | | |
| RW25L | | 1900 | | 2200 |
| | | 5.5 NM | | 1.2 NM |
| GP 3.00° TCH 54 | | | | |
| CATEGORY | A | B | C | D |
| RNP 0.15 DA | 445/30 341 (400- ² / ₅) | | | |
| RNP 0.30 DA | 543/50 439 (500-1) | | | |
| AUTHORIZATION REQUIRED | | | | |

ELEV 128 **D** TDZE 104

TDZ/CL Rwws 6R, 7L, 24R, and 25L
HIRL all Rwws