

APP CRS	Rwy Idg	<b>11259</b>
<b>071°</b>	TDZE	<b>128</b>
	Apt Elev	<b>128</b>

# RNAV (RNP) Z RWY 7L

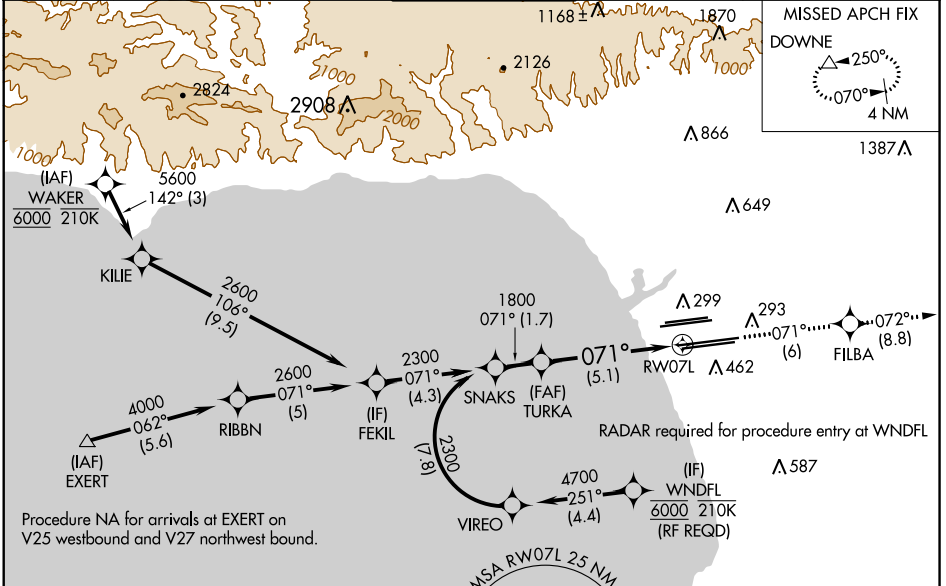
LOS ANGELES INTL (LAX)

**▽** For uncompensated Baro-VNAV systems, procedure NA below 5°C (41°F) or above 54°C (130°F). GPS required. Simultaneous approach authorized. For inop ALS, increase RNP 0.11 all Cats visibility to RVR 5000 and RNP 0.30 all Cats visibility to RVR 6000.

**MALSR**

**MISSED APPROACH:** Climb to 3000 on track 071° to FILBA and on track 072° to DOWNE and hold.

D-ATIS	SOCAL APP CON	LOS ANGELES TOWER	GND CON	CLNC DEL	CPDLC
ARR <b>133.8</b>	<b>124.3 363.2</b> (APCH FM WEST)	<b>124.9 269.0</b> (090°-224°)	<b>N 121.65 327.0</b> <b>S 121.75 327.0</b> <b>W 121.4 327.0</b>	<b>120.35</b> <b>327.0</b>	
DEP <b>135.65</b>	<b>124.5 235.975</b> (225°-044°)	<b>128.5 360.7</b> (045°-089°)			



ELEV 128	<b>D</b> TDZE 128
----------	-------------------

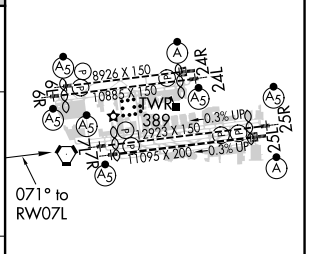
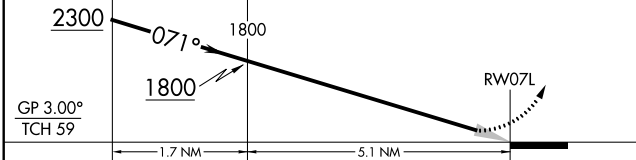
VGSI and RNAV glidepath not coincident (VGSI Angle 3.00/TCH 83).

3000  
↑  
tr 071°

FILBA

tr 072°

DOWNE



CATEGORY	A	B	C	D
RNP 0.11 DA		441/24	313 (400-½)	
RNP 0.30 DA		485/40	357 (400-¾)	

## AUTHORIZATION REQUIRED

TDZ/CL Rwws 6R, 7L, 24R, and 25L  
HIRL all Rwws

SW-3, 28 MAR 2019 to 25 APR 2019

SW-3, 28 MAR 2019 to 25 APR 2019