

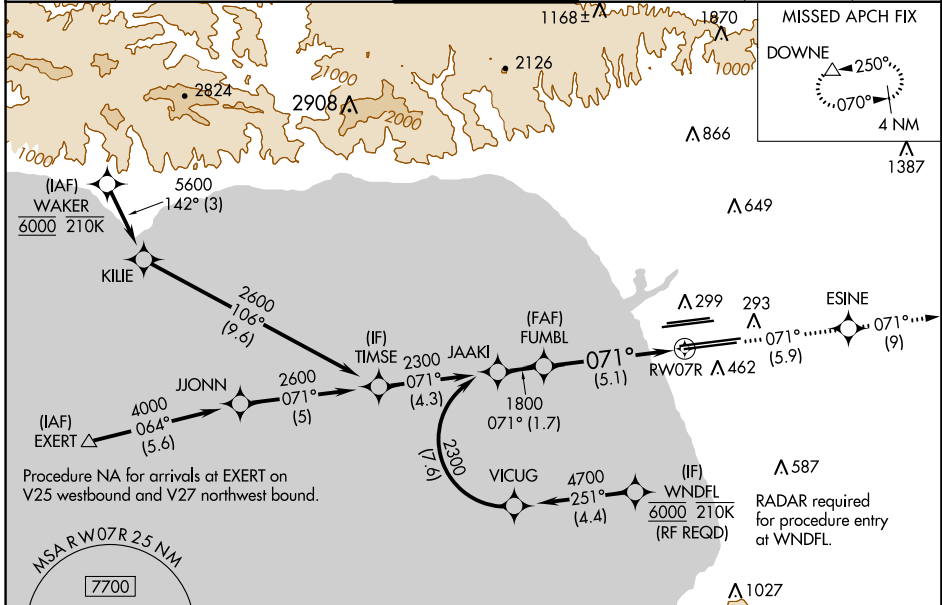
| | |
|------------------------|--|
| APP CRS 071° | Rwy Idg 11095 TDZE 128 Apt Elev 128 |
|------------------------|--|

RNAV (RNP) Z RWY 7R

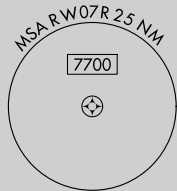
LOS ANGELES INTL (LAX)

| | | |
|---|--------------|---|
| <p>▽ For uncomputerized Baro-VNAV systems, procedure NA below 5°C (41°F) or above 54°C (130°F). For inop MALSR, increase RNP 0.11 all Cats visibility to RVR 4500. Simultaneous approach authorized.</p> | <p>MALSR</p> | <p>MISSED APPROACH: Climb to 3000 on track 071° to ESINE and on track 071° to DOWNE and hold.</p> |
| | | |

| | | | | | | |
|---|--|--|--|---|---|-------|
| D-ATIS ARR 133.8 DEP 135.65 | SOCAL APP CON 124.3 363.2 (APCH FM WEST) 124.5 235.975 (225°-044°) | 124.9 269.0 (090°-224°) 128.5 360.7 (045°-089°) | LOS ANGELES TOWER N 133.9 239.3 S 120.95 379.1 | GND CON N 121.65 327.0 S 121.75 327.0 W 121.4 327.0 | CLNC DEL 120.35 327.0 | CPDLC |
|---|--|--|--|---|---|-------|

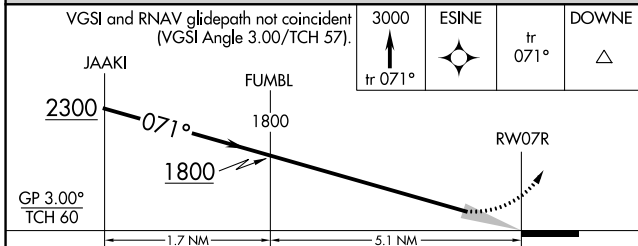


Procedure NA for arrivals at EXERT on V25 westbound and V27 northwest bound.



GPS REQUIRED

| | |
|----------|-------------------|
| ELEV 128 | D TDZE 128 |
|----------|-------------------|



TDZ/CL Rwy's 6R, 7L, 24R, and 25L
HIRL all Rwy's

| CATEGORY | A | B | C | D |
|-------------|---|--------|-------------|---|
| RNP 0.11 DA | | 414/24 | 286 (300-½) | |
| RNP 0.30 DA | | 538/45 | 410 (500-¾) | |

AUTHORIZATION REQUIRED

SW-3, 28 MAR 2019 to 25 APR 2019

SW-3, 28 MAR 2019 to 25 APR 2019