

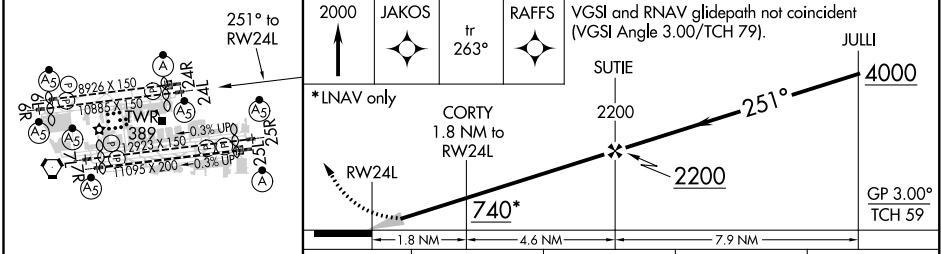
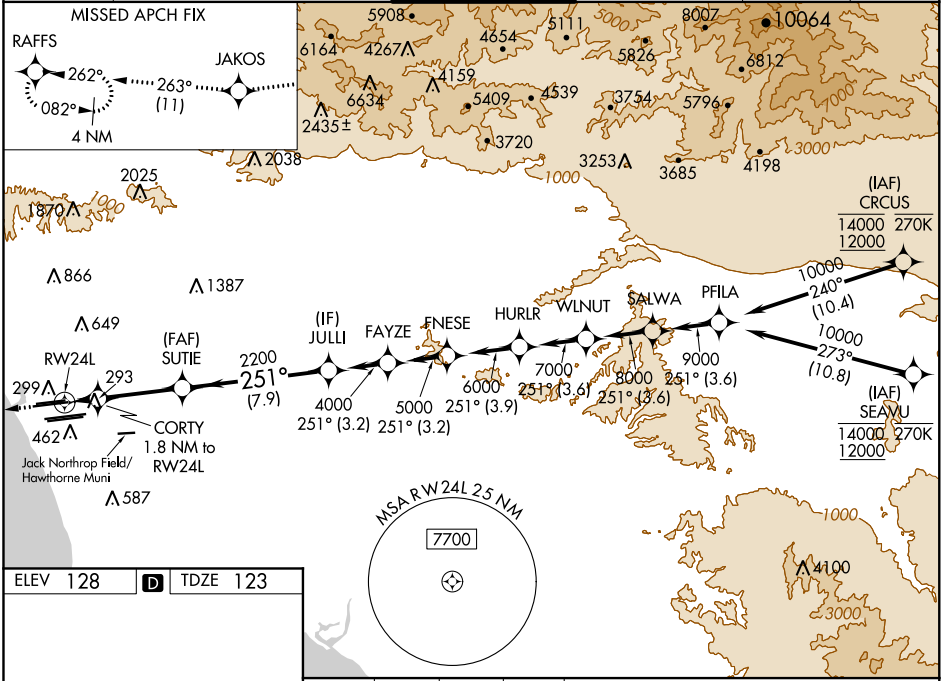
RNAV (GPS) Y RWY 24L

LOS ANGELES INTL (LAX)

WAAS CH 56407 W24B	APP CRS 251°	Rwy Idg TDZE Apt Elev	9483 123 128
--	------------------------	-----------------------------	---

RNP APCH.		MALSR 	MISSED APPROACH: Climb to 2000 direct JAKOS and track 263° to RAFFS and hold.
<p>▼ For uncompensated Baro-VNAV systems, LNAV/VNAV NA below 5°C (41°F) or above 54°C (130°F). Simultaneous approach authorized. LNAV procedure NA during simultaneous operations. Use of FD or AP providing RNAV track guidance required during simultaneous operations. Simultaneous approach authorized with HHR. # RVR 1800 authorized with use of FD or AP or HUD to DA.</p>			

D-ATIS ARR 133.8 DEP 135.65	SOCAL APP CON 124.3 363.2 (APCH FM WEST) 124.5 235.975 (223°-044°)	124.9 269.0 (090°-224°) 128.5 360.7 (043°-089°)	LOS ANGELES TOWER N 133.9 239.3 S 120.95 379.1	GND CON N 121.65 327.0 S 121.75 327.0 W 121.4 327.0	CLNC DEL 120.35 327.0	CPDLC
---	--	--	--	---	---	-------



ELEV 128	D	TDZE 123			
LPV	DA#	323/24	200 (200-½)		
LNAV/VNAV	DA	608/60	485 (500-1¼)		
LNAV	MDA	660/24	537 (600-½)	660/55	537 (600-1)

LOS ANGELES, CALIFORNIA
Amdt 5B 21JUN18

33°57'N-118°24'W

RNAV (GPS) Y RWY 24L

SW-3, 28 MAR 2019 to 25 APR 2019

SW-3, 28 MAR 2019 to 25 APR 2019