

WAAS CH <b>61207</b> <b>W06B</b>	APP CRS <b>071°</b>	Rwy Idg TDZE <b>116</b> Apt Elev <b>128</b>	<b>9748</b>
--	------------------------	---	-------------

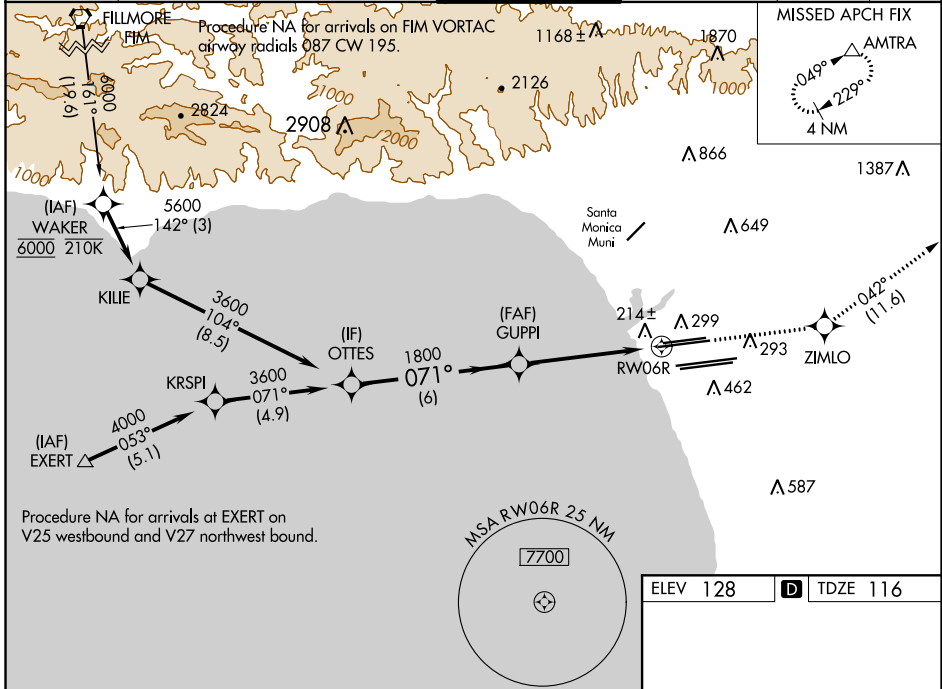
# RNAV (GPS) Y RWY 6R

LOS ANGELES INTL (LAX)

▼ For uncompensated Baro-VNAV systems, LNAV/VNAV NA below 5°C (41°F) or above 54°C (130°F). DME/DME RNP-0.3 NA. For inop ALS, increase LNAV/VNAV all Cats visibility to RVR 4500, LNAV Cat C and D visibility to RVR 5500. Simultaneous approach authorized. LNAV procedure NA during simultaneous operations. Use of FD or AP providing RNAV track guidance required during simultaneous operations. # RVR 1800 authorized with use of FD or AP or HUD to DA.

MALSR 	MISSED APPROACH: Climb to 3000 direct ZIMLO and track 042° to AMTRA and hold.
-----------	--

D-ATIS ARR <b>133.8</b> DEP <b>135.65</b>	SOCAL APP CON <b>124.3 363.2</b> (APCH FM WEST) <b>124.5 235.975</b> (225°-044°)	<b>124.9 269.0</b> (090°-224°) <b>128.5 360.7</b> (045°-089°)	LOS ANGELES TOWER <b>N 133.9 239.3</b> <b>S 120.95 379.1</b>	GND CON <b>N 121.65 327.0</b> <b>S 121.75 327.0</b> <b>W 121.4 327.0</b>	CLNC DEL <b>120.35 327.0</b>	CPDLC
---	--	--	--	---	---------------------------------	-------



ELEV 128		TDZE 116			
VGSi and RNAV glidepath not coincident (VGSi Angle 3.00/TCH 69).		3000	ZIMLO	tr 042°	AMTRA
<p>GP 3.00° TCH 53</p> <p>OTTES 3600</p> <p>GUPPI 1800</p> <p>071°</p> <p>1800</p> <p>6 NM</p> <p>4.2 NM</p> <p>0.9 NM</p>		*0.9 NM to RW06R	*RNAV only		
CATEGORY	A	B	C	D	
LPV DA#		316/24	200 (200-½)		
LNAV/VNAV DA		398/24	282 (300-½)		
LNAV MDA	480/24	364 (400-½)	480/35	364 (400-⅝)	
TDZ/CL Rwws 6R, 7L, 24R, and 25L HIRL all Rwws					

SW-3, 28 MAR 2019 to 25 APR 2019

SW-3, 28 MAR 2019 to 25 APR 2019