

SEAVU TWO ARRIVAL

AL-237 (FAA)

LOS ANGELES INTL (LAX)
LOS ANGELES, CALIFORNIA

SW-3, 28 MAR 2019 to 25 APR 2019

SOCAL APP CON
124.05 353.775
LOS ANGELES TOWER
N 133.9 239.3
S 120.95 379.1
D-ATIS ARR
133.8

NOTE: Expect runway assignment on initial contact with Southern California TRACON.
In the event of lost communications prior to runway assignment proceed via ILS Rwy 25L.

POMONA
110.4 POM
Chan 41

SEAVU
N33°58.34'
W117°29.31'
14000
12000

PECOX
N33°57.13'
W117°19.97'
14000

ENGLI
N33°56.88'
W117°11.12'
16000

KONZL
N33°57.26'
W117°06.69'
17000 280K

ARRVD
N33°59.13'
W116°43.96'

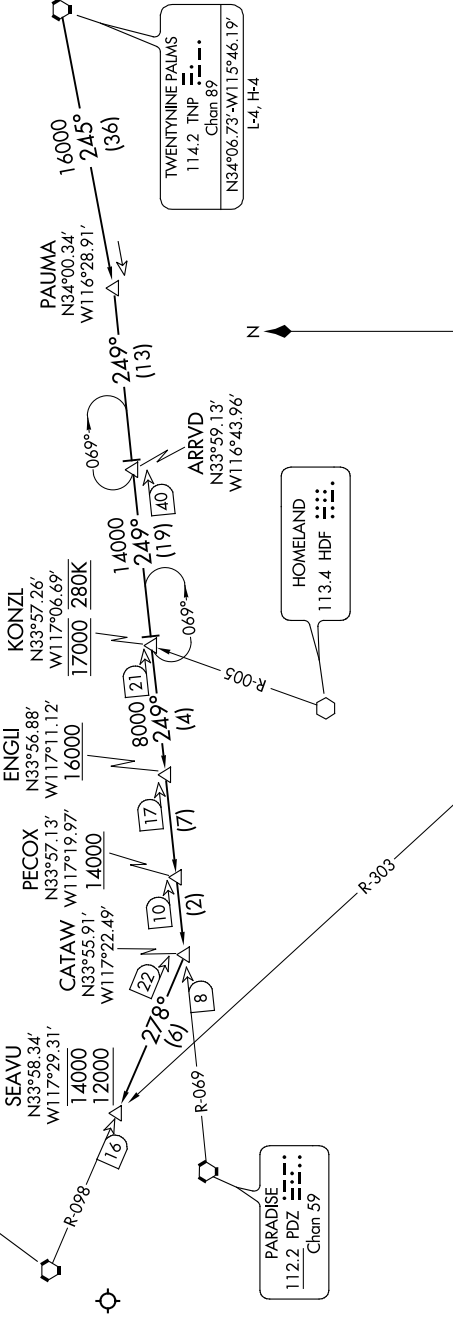
PAUMA
N34°00.34'
W116°28.91'

TWENTYNINE PALMS
114.2 TNP
Chan 89
N34°06'73"-W115°46.19'
L-4, H-4

PARADISE
112.2 PDZ
Chan 59

HOMELAND
113.4 HDF
Chan 85

JULIAN
114.0 JU
Chan 87



NOTE: Chart not to scale.

ARRIVAL ROUTE DESCRIPTION

TWENTYNINE PALMS TRANSITION (TNP.SEAVU2):
From over TNP VORTAC on TNP R-245 and PDZ R-069 to CATAW, then on POM R-098 to SEAVU.

LOST COMMUNICATIONS: In the event of lost communication prior to runway assignment proceed via ILS Rwy 25L.

NOTE: DME or RADAR required.

SEAVU TWO ARRIVAL

SW-3, 28 MAR 2019 to 25 APR 2019