

VISTA THREE ARRIVAL

AL-237 (FAA)

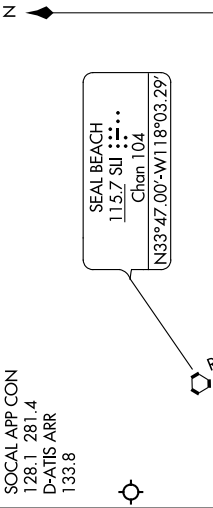
LOS ANGELES INTL (LAX)
LOS ANGELES, CALIFORNIA

SW-3, 28 MAR 2019 to 25 APR 2019

ARRIVAL ROUTE DESCRIPTION

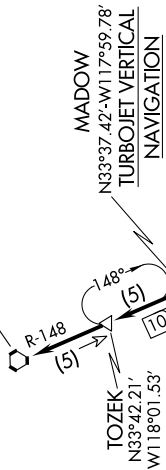
JULIAN TRANSITION (JLI.VISTA3): From over JLI VORTAC on JLI R-263 and OCN R-083 to VISTA. Thence, . . .

. . . from VISTA to CYNDE on OCN R-083. From CYNDE to OCN VORTAC on OCN R-083. From OCN VORTAC to SHIVE on OCN R-259 and SLI R-148. From SHIVE to CWARD on SLI R-148. From CWARD to BAYER on SLI R-148. From BAYER to MADOW on SLI R-148. From MADOW to TOZEK on SLI R-148. From TOZEK to SLI VORTAC on SLI R-148. Expect RADAR vectors to final approach course for Runways 24 or 25.



SOCAL APP CON
128.1 281.4
D-ATIS ARR
133.8

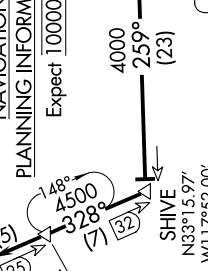
SEAL BEACH
115.7 SLI
Chan 104
N33°47.00'-W118°03.29'



MADOW
N33°37.42'-W117°59.78'
TURBOJET VERTICAL
NAVIGATION
Expect 7000

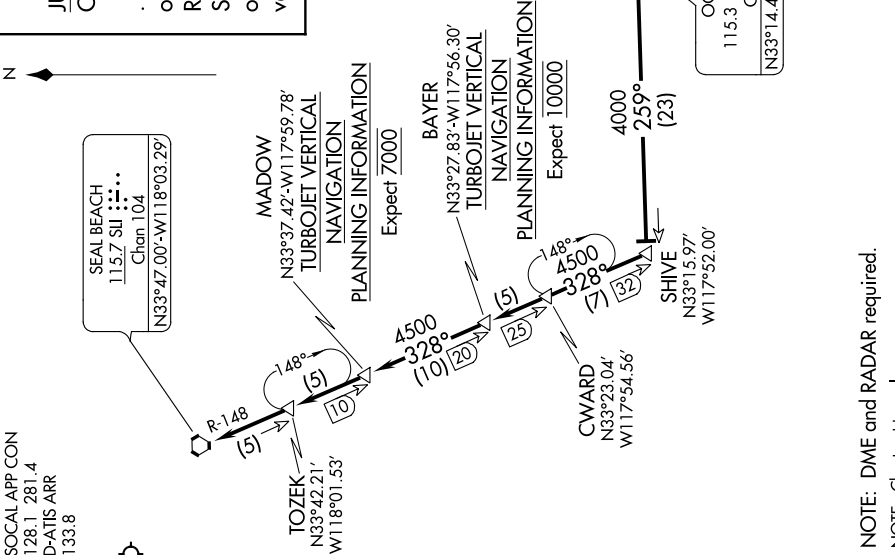


BAYER
N33°27.83'-W117°56.30'
TURBOJET VERTICAL
NAVIGATION
Expect 10000

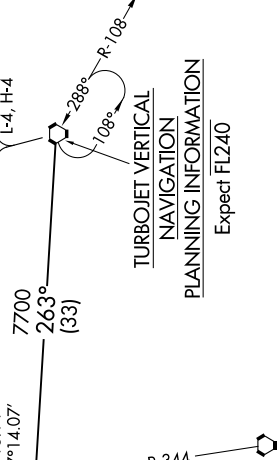


CWARD
N33°23.04'
W117°54.56'

SHIVE
N33°15.97'
W117°52.00'



JULIAN
114.0 JLI
Chan 87
N33°08.43'-W116°35.16'



TURBOJET VERTICAL
NAVIGATION
PLANNING INFORMATION
Expect FL240

MISSION BAY
117.8 MZB
Chan 125

VISTA THREE ARRIVAL

SW-3, 28 MAR 2019 to 25 APR 2019

NOTE: DME and RADAR required.
NOTE: Chart not to scale.