

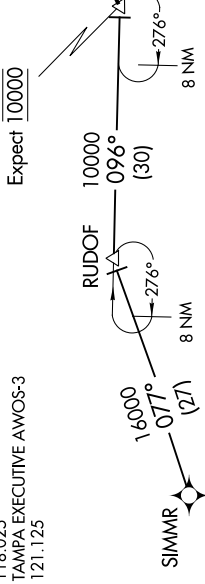
BLOND FIVE ARRIVAL (RNAV)

TAMPA, FLORIDA

SE-3, 28 MAR 2019 to 25 APR 2019

- TAMPA APP CON 118.8 269.1
- TAMPA INTL D-ATIS ARR 126.45
- ST. PETE-CLEARWATER INTL ATIS 134.5
- SARASOTA/BRADENTON INTL ATIS 124.375
- MACDILL AFB ATIS 133.825 270.1
- LAKELAND UNDER INTL ATIS 118.025
- TAMPA EXECUTIVE AWOS-3 121.125

BLOND VERTICAL NAVIGATION PLANNING INFORMATION



NOTE: Chart not to scale.

ARRIVAL ROUTE DESCRIPTION

SIMMR TRANSITION (SIMMR.BLOND5)

From BLOND on track 068° to AGASE. Thence on assigned runway transition.

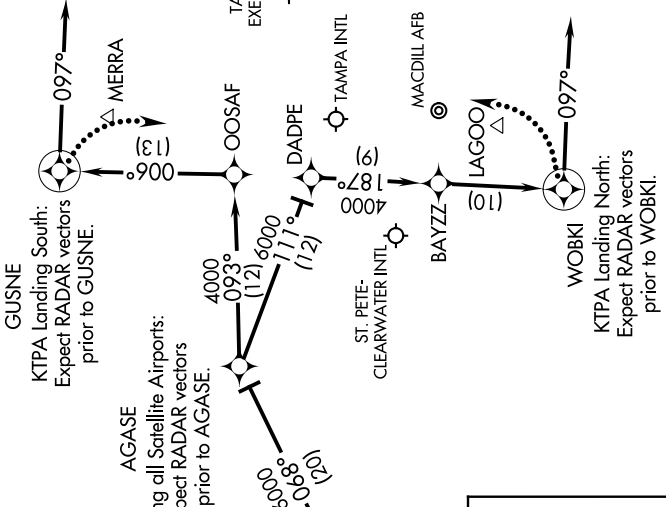
LANDING NORTH RWY 1L/R: From over AGASE on track 111° to DADPE, then on track 187° to BAYZZ, then on track 187° to WOBKI, then on heading 097°. Expect RADAR vectors.

LANDING SOUTH RWY 19L/R: From over AGASE on track 093° to OOSAF, then on track 006° to GUSNE, then right turn on heading 097°. Expect RADAR vectors.

LOST COMMUNICATIONS

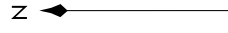
KTPA Landing South: Continue track to GUSNE, then turn right to intercept the Rwy 19R final approach course, conduct approach.

KTPA Landing North: Continue track to WOBKI, then turn left to intercept the Rwy 1L final approach course, conduct approach.



- NOTE: RADAR required.
- NOTE: RNAV 1.
- NOTE: DME/DME/IRU or GPS required.
- NOTE: Turbojet and Turboprop aircraft only.
- NOTE: Primary landing Rwy 1L/R, 19L/R.
- NOTE: For non-GPS equipped aircraft: GUSNE transition: SRQ, PIE must be operational; WOBKI transition: SRQ, LAL, ORL, and PIE must be operational.

SARASOTA/
BRADENTON
INTL



BLOND FIVE ARRIVAL (RNAV)

(BLOND.BLOND5) 28FEB19

TAMPA, FLORIDA

SE-3, 28 MAR 2019 to 25 APR 2019