

# GPS-B

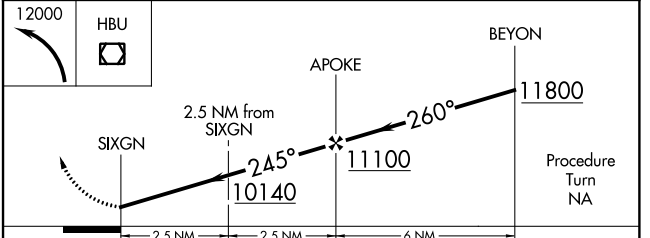
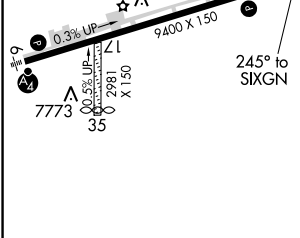
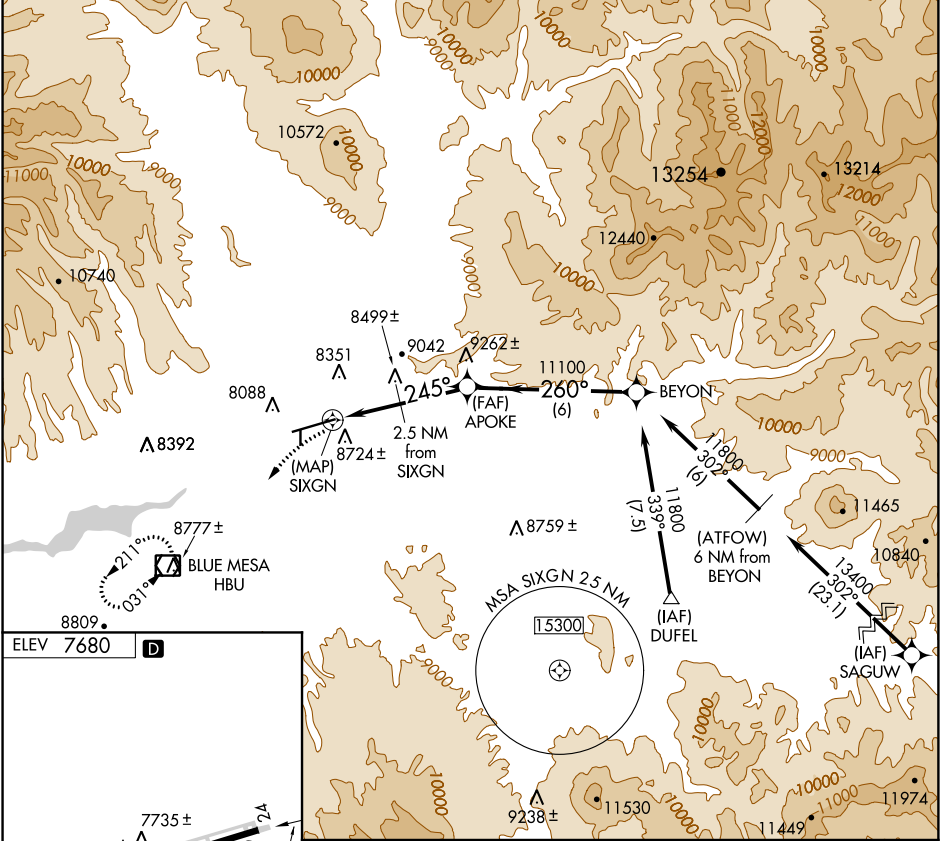
GUNNISON-CRESTED BUTTE RGNL (GUC)

APP CRS <b>245°</b>	Rwy Idg TDZE Apt Elev	<b>N/A</b> <b>N/A</b> <b>7680</b>
------------------------	-----------------------------	---

Procedure not authorized when airport closed except by prior arrangement.  
DME/DME RNP-0.3 NA.

MISSED APPROACH: Climbing left turn to 12000 direct HBU VOR/DME and hold.

AWOS-3PT <b>135.075</b>	DENVER CENTER <b>125.35 354.05</b>	UNICOM <b>122.7 (CTAF)</b>
----------------------------	---------------------------------------	-------------------------------



HIRL Rwy 6-24 REIL Rwy 24				
CATEGORY	A	B	C	D
CIRCLING	9180-1¼ 1500 (1500-1¼)	9180-1½ 1500 (1500-1½)	9180-3	1500 (1500-3)

# GPS-B

SW-1, 28 MAR 2019 to 25 APR 2019

SW-1, 28 MAR 2019 to 25 APR 2019