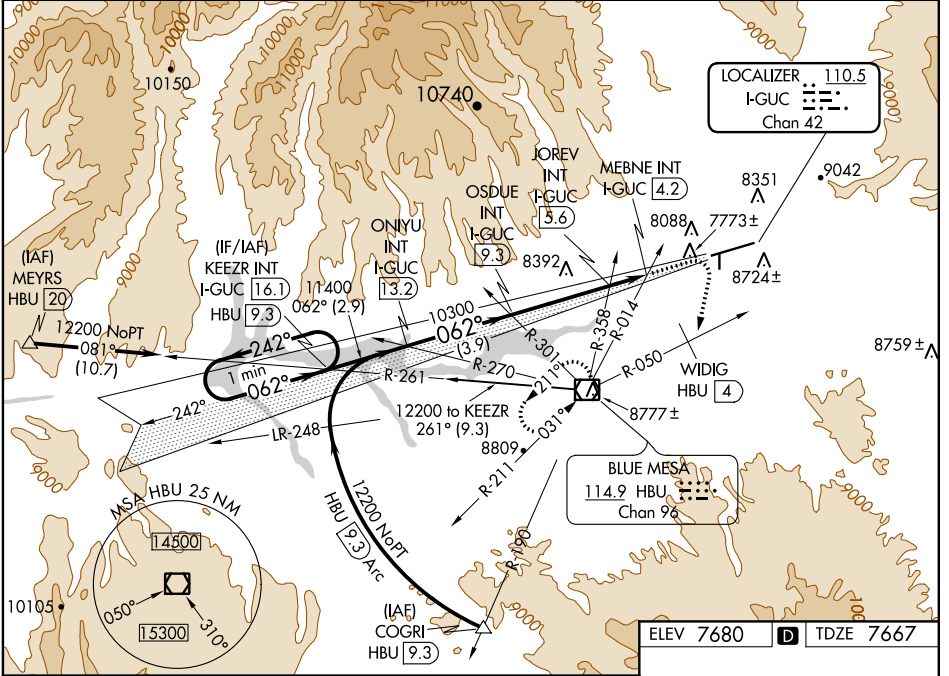


LOC/DME I-GUC <b>110.5</b> Chan <b>42</b>	APP CRS <b>062°</b>	Rwy Idg <b>9397</b> TDZE <b>7667</b> Apt Elev <b>7680</b>
---	------------------------	---

**ILS or LOC RWY 6**  
GUNNISON-CRESTED BUTTE RGNL (GUC)

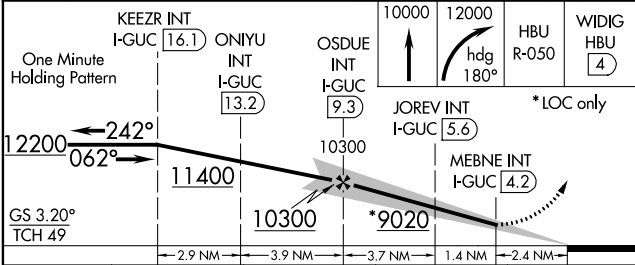
<p><b>⚠</b> Circling NA at night. Inoperative table does not apply. When local altimeter setting not received, procedure NA. DME required. Visibility reduction by helicopters NA. Procedure NA when airport closed except by prior arrangement.</p>	<p><b>MALSF</b> ⚠</p>	<p><b>MISSED APPROACH:</b> Climb to 10000 then climbing right turn to 12000 via heading 180° and HBU VOR/DME R-050 to WIDIG/HBU 4 DME continue via HBU VOR/DME R-050 to HBU VOR/DME and hold.</p>
--	---------------------------	---

AWOS-3PT <b>135.075</b>	DENVER CENTER <b>125.35 354.05</b>	UNICOM <b>122.7 (CTAF)</b>
----------------------------	---------------------------------------	-------------------------------



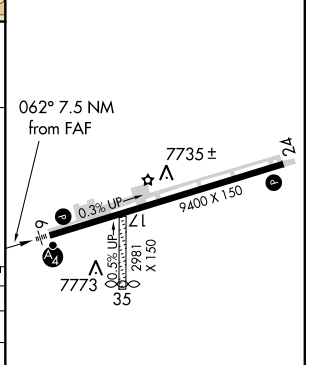
SW-1, 28 MAR 2019 to 25 APR 2019

SW-1, 28 MAR 2019 to 25 APR 2019



ELEV 7680	<b>D</b>	TDZE 7667
-----------	----------	-----------

CATEGORY	A	B	C	D
S-ILS 6	8590-3 923 (1000-3)			NA
S-LOC 6	9020-3 1353 (1400-3)			
CIRCLING	9260-3 1580 (1600-3)			
	JOREV FIX MINIMUMS			
S-LOC 6	8640-3 973 (1000-3)			
CIRCLING	9260-3 1580 (1600-3)			



HIRL Rwy 6-24 REIL Rwy 24					
FAF to MAP 5.1 NM					
Knots	60	90	120	150	180
Min:Sec	5:06	3:24	2:33	2:02	1:42