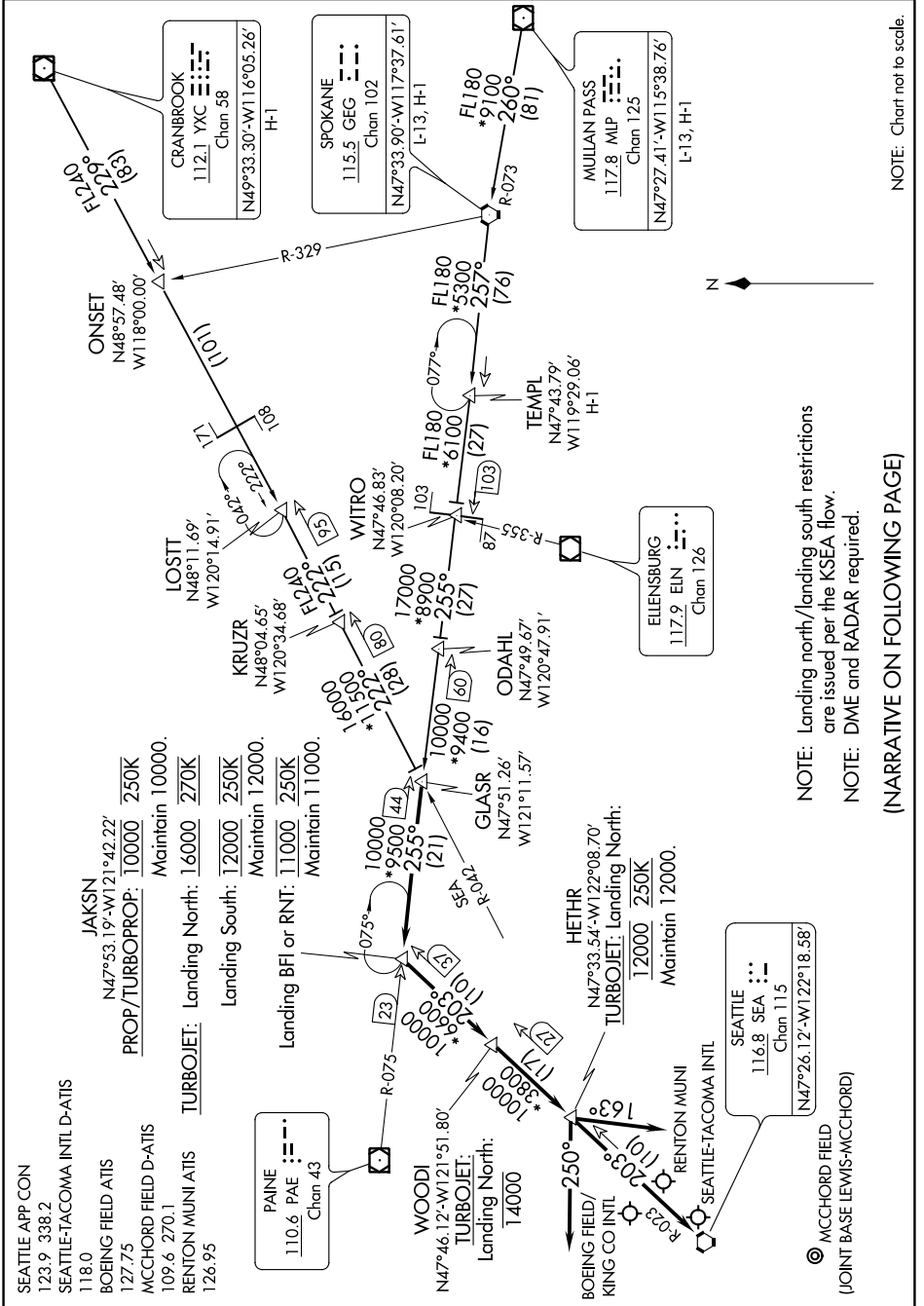


GLASR ONE ARRIVAL

AL-582 (FAA)

SEATTLE, WASHINGTON

NW-1, 28 MAR 2019 to 25 APR 2019



NOTE: Chart not to scale.

NOTE: Landing north/landing south restrictions are issued per the KSEA flow.
 NOTE: DME and RADAR required.

(NARRATIVE ON FOLLOWING PAGE)

NW-1, 28 MAR 2019 to 25 APR 2019

GLASR ONE ARRIVAL

SEATTLE, WASHINGTON

SEATTLE
 116.8 SEA
 Chan 115
 N47°26.12'-W122°18.58'

MCCHORD FIELD
 (JOINT BASE LEWIS-MCCHORD)