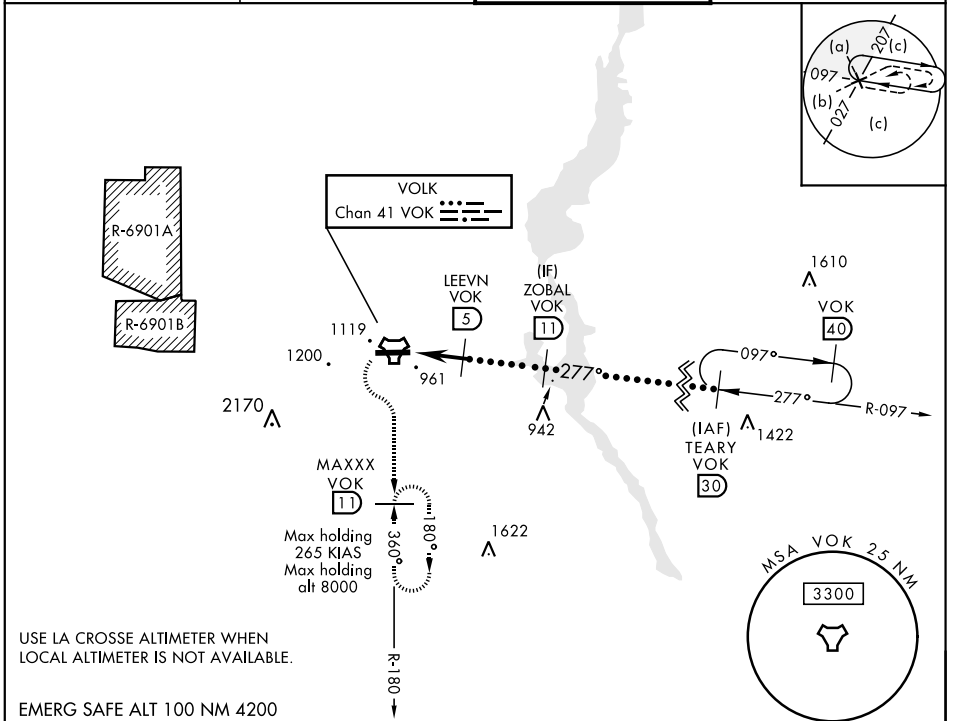


TACAN VOK Chan 41	APCH CRS 277°	Rwy ldg THRE Arprt Elev 9000 904 912	JAL-714 [USAF]	VOLK FIELD (KVOK)
----------------------	------------------	---	----------------	-------------------

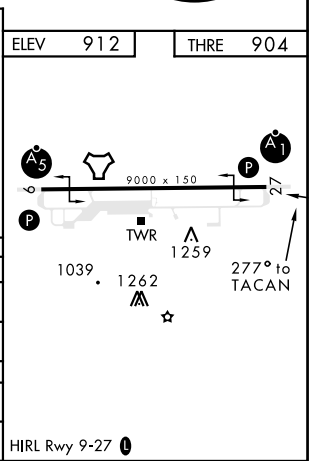
* When ALS inop, increase CAT CDE vis to 1½ miles.
 ** Circling not authorized South of Rwy 9-27.
 *** When ALS inop, increase CAT CDE vis to 1¾ miles.

MISSED APPROACH: Climbing left turn to 3000 intercept VOK TACAN R-180 to MAXXX and hold.

ATIS 120.475 257.85	VOLK APP CON 135.25 244.875	VOLK TOWER * 127.5 (CTAF) 239.25	GND CON 121.9 275.8
------------------------	--------------------------------	-------------------------------------	------------------------



3000 VOK R-180	MAXXX VOK 11	TEARY VOK 30	
TACAN	EEDEE 1.3	ZOBAL 11	FL180
LEEVNVOK 5	2200	2700	2.94° TCH 53
CATEGORY	C	D	E
S-27 *	1360/45	456 (500-7½)	
CIRCLING **	1500-1½ 588 (600-1½)	1500-2 588 (600-2)	1580-2¼ 668 (700-2¼)
LA CROSSE ALTIMETER SETTING MINIMUMS			
S-27 ***	1500-1¼	596 (600-1¼)	
CIRCLING **	1640-2 728 (800-2)	1640-2¼ 728 (800-2¼)	1720-2¾ 808 (900-2¾)



EC-3, 28 MAR 2019 to 25 APR 2019

EC-3, 28 MAR 2019 to 25 APR 2019