

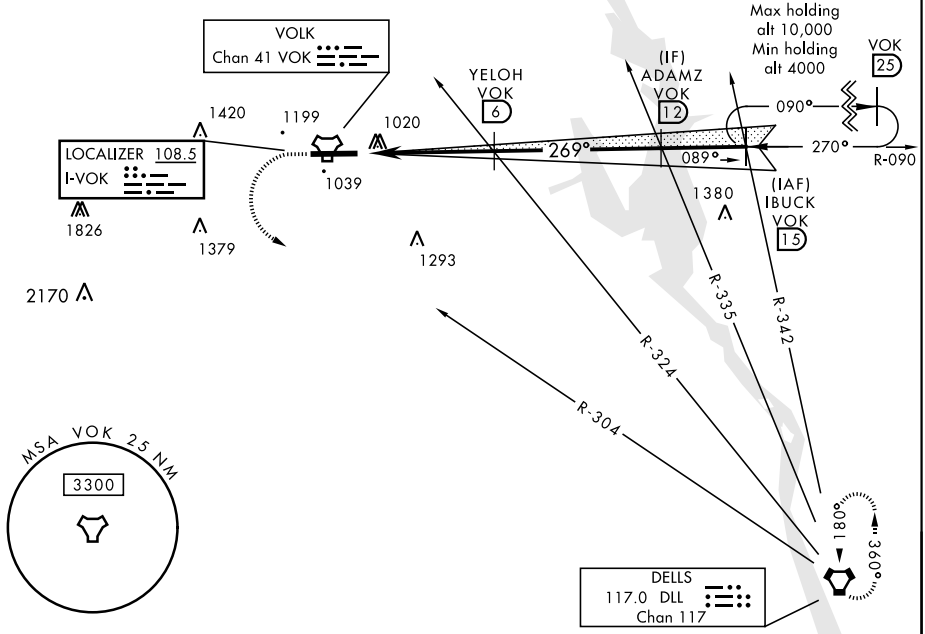
LOC I-VOK 108.5	APCH CRS 269°	Rwy Idg THRE Arpt Elev 9000 904 912	AL-714 [USAF]	VOLK FIELD (KVOK)
---------------------------	-------------------------	---	---------------	-------------------

▼ * When ALS inop, increase vis to ¾ mile.
 ** When ALS inop, increase CAT AB vis to 1 mile, CAT CDE vis to 1½ miles.

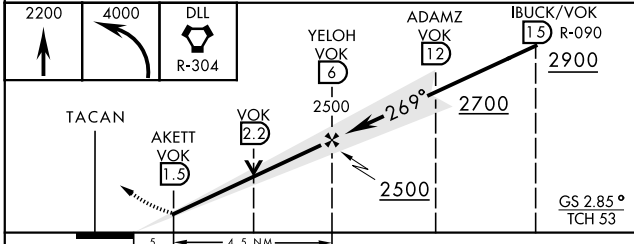
ALSF-1 MISSED APPROACH: Climb to 2200, then climbing left turn to 4000 via DLL VORTAC R-304 direct DLL and hold.

ATIS 120.475 257.85	VOLK APP CON 135.25 244.875	VOLK TOWER ★ 127.5 (CTAF) 239.25 (0)	GND CON 121.9 275.8
-------------------------------	---------------------------------------	--	-------------------------------

*** Circling NA South of Rwy 9-27.

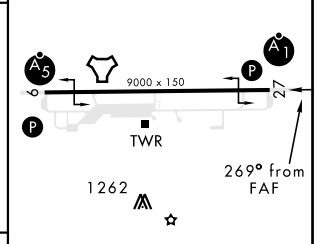


EMERG SAFE ALT 100 NM 4200



ELEV 912	THRE 904
----------	----------

CATEGORY	A	B	C	D	E
S-ILS 27 *	1 104/24		200	(200-½)	
S-LOC 27 **	1 320/24	416 (500-½)	1 320/40		416 (500-¾)
CIRCLING ***	1 400-1 488 (500-1)	1 500-1 588 (600-1)	1 500-1½ 588 (600-1½)	1 500-2 588 (600-2)	1 580-2¼ 668 (700-2¼)



HIRL Rwy 9-27 (0)	FAF to MAP 4.5 NM					
	Knots	60	90	120	150	180
	Min:Sec	4:30	3:00	2:15	1:48	1:30

EC-3, 28 MAR 2019 to 25 APR 2019

EC-3, 28 MAR 2019 to 25 APR 2019