

CAMP DOUGLAS, WISCONSIN

# RNAV (GPS) RWY 9

APCH CRS	Rwy Idg	<b>9000</b>
<b>089°</b>	THRE	<b>912</b>
	Arpt Elev	<b>912</b>

AL-714 [USAF]

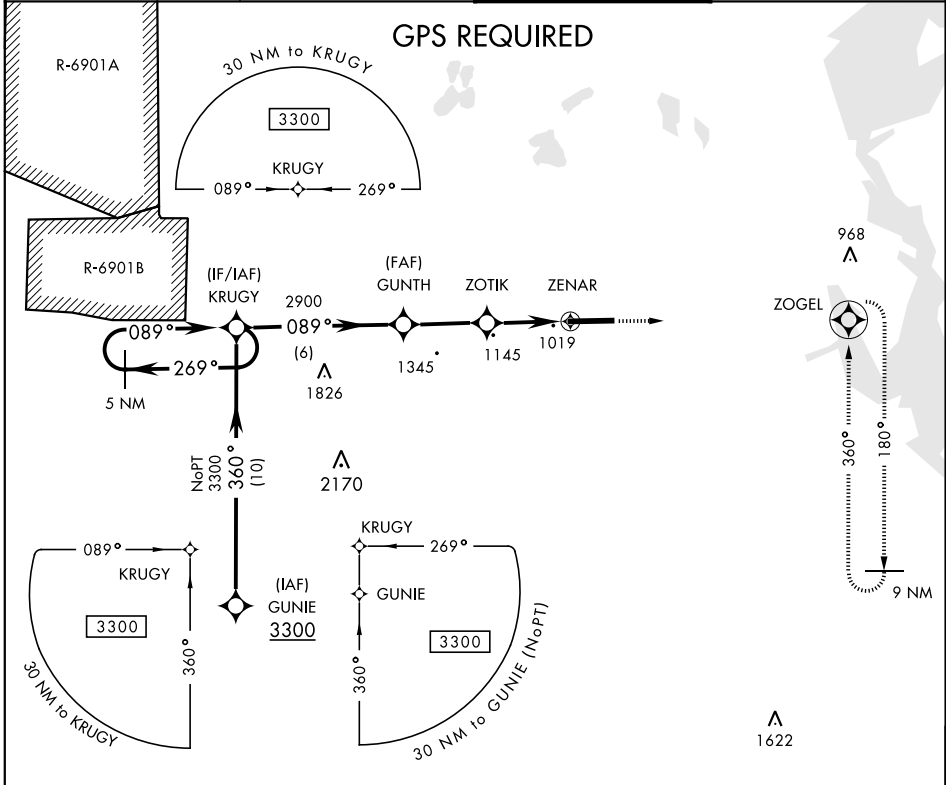
VOLK FIELD (KVOK)

▼ \*When ALS inop, increase CAT AB vis to 1 mile, CAT CDE vis to 1 3/4 miles.  
 Procedure not authorized when R-6901B active.  
 DME/DME RNP-0.3 NA.  
 RNAV-1.



MISSED APPROACH: Climb to 4000 direct ZOGEL and hold, continue climb-in-hold to 4000.

ATIS <b>120.475 257.85</b>	VOLK APP CON <b>135.25 244.875</b>	VOLK TOWER ★ <b>127.5 (CTAF) 239.25 (0)</b>	GND CON <b>121.9 275.8</b>
-------------------------------	---------------------------------------	--	-------------------------------



EMERG SAFE ALT 100 NM 4200

	4000	ZOGEL	ELEV 912	THRE 912	
CATEGORY	A	B	C	D	E
LNAV MDA *	1500-3/4 588 (600-3/4)		1500-1/4 588 (600-1/4)		
CIRCLING	NOT AUTHORIZED				HIRL Rwy 9-27 (0)

CAMP DOUGLAS, WISCONSIN  
 Amdt 1 14149

43°56'N-90°15'W

VOLK FIELD (KVOK)

# RNAV (GPS) RWY 9

EC-3: 28 MAR 2019 to 25 APR 2019

EC-3: 28 MAR 2019 to 25 APR 2019