

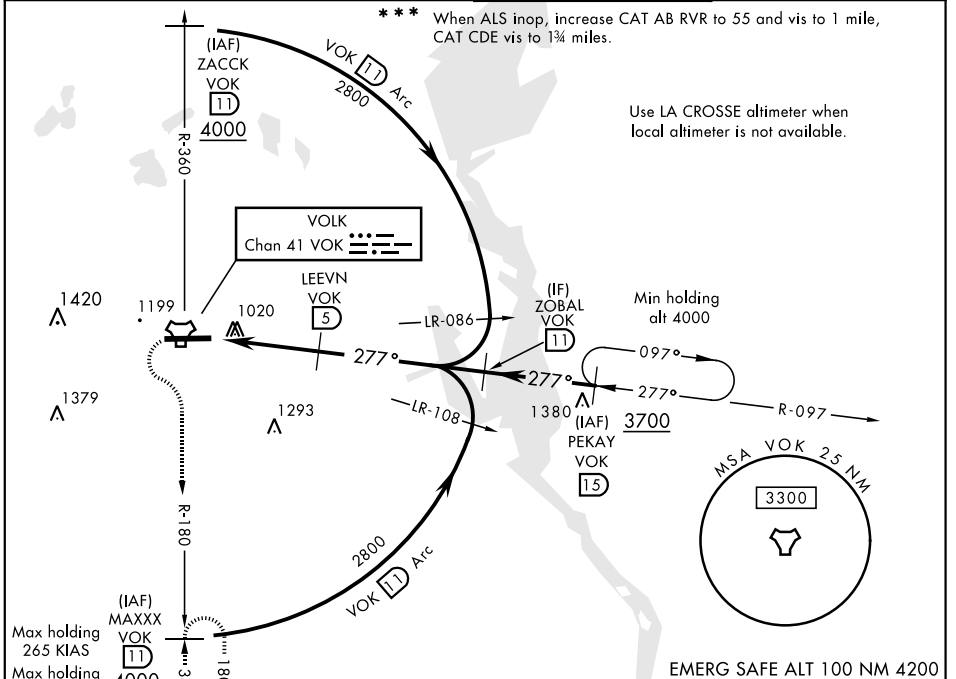
TACAN VOK Chan 41	APCH CRS 277°	Rwy ldg THRE 904 Arpt Elev 912	AL-714 [USAF]	VOLK FIELD (KVOK)
-----------------------------	-------------------------	--	---------------	-------------------

▼ * When ALS inop, increase CAT AB RVR to 55 and vis to 1 mile, CAT CDE vis to 1½ miles.
 ** Circling not authorized South of Rwy 9-27.

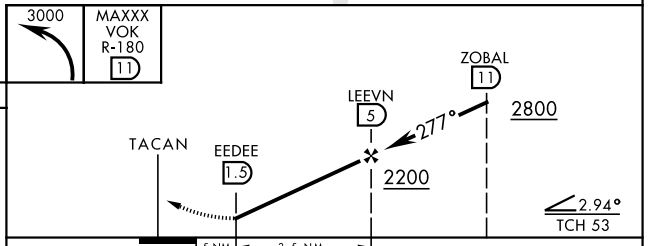
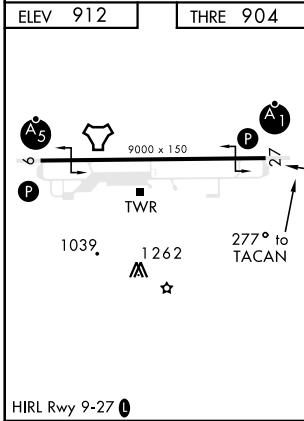


⚠ MISSED APPROACH: Climbing left turn to 3000, intercept VOK TACAN R-180 to MAXXX and hold.

ATIS 120.475 257.85	VOLK APP CON 135.25 244.875	VOLK TOWER * 127.5 (CTAF) 239.25 (0)	GND CON 121.9 275.8
-------------------------------	---------------------------------------	--	-------------------------------



ELEV 912	THRE 904
----------	----------



CATEGORY	A	B	C	D	E
S-27 *	1360/24	456 (500-½)	1360/45	456 (500-¾)	
CIRCLING **	1400-1 488 (500-1)	1500-1 588 (600-1)	1500-1½ 588 (600-1½)	1500-2 588 (600-2)	1580-2¼ 668 (700-2¼)
LA CROSSE ALTIMETER SETTING MINIMUMS					
S-27 ***	1500/24	596 (600-½)	1500-1¼	596 (600-1¼)	
CIRCLING **	1540-1 628 (700-1)	1640-1 728 (800-1)	1640-2 728 (800-2)	1640-2¼ 728 (800-2¼)	1720-2¾ 808 (900-2¾)

EC-3, 28 MAR 2019 to 25 APR 2019

EC-3, 28 MAR 2019 to 25 APR 2019