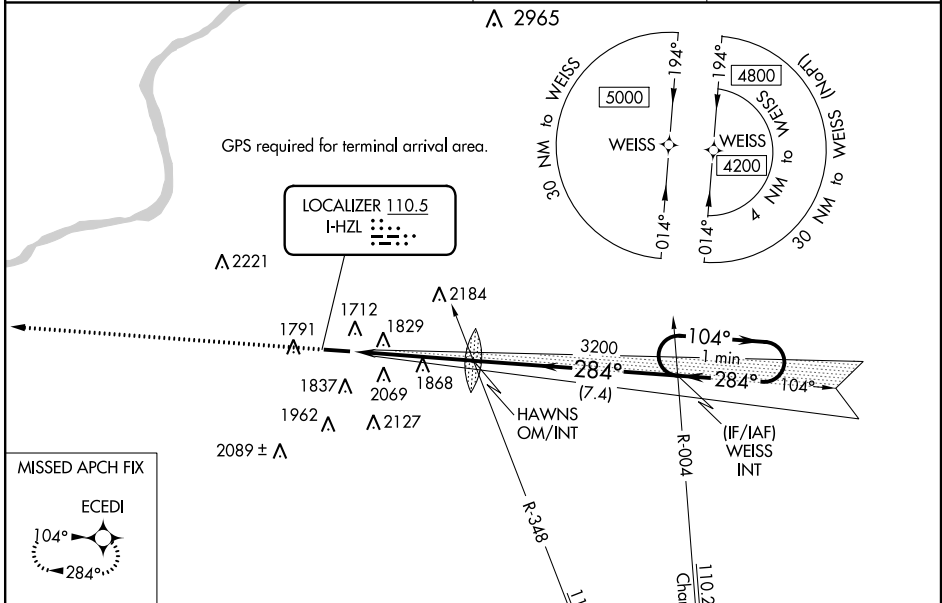


LOC I-HZL 110.5	APP CRS 284°	Rwy Idg 4898
		TDZE 1603
		Apt Elev 1603

LOC RWY 28
HAZLETON RGNL (HZL)

<p>NA</p> <p>RNAV 1-GPS required. Inop table does not apply to S-LOC Cat A and B, for inop ALS increase S-LOC Cat C and D visibility to 2 SM. When using Wilkes-Barre/Scranton Intl altimeter setting; inop table does not apply to S-LOC 28 Cat A, C. Procedure NA at night. Rwy 28 helicopter visibility reduction below 1 SM NA.</p>	<p>MALS</p>	<p>MISSED APPROACH:</p> <p>Climb to 4100 direct ECEDI and hold.</p>
	<p>AWOS-3 119.975</p>	

<p>WILKES-BARRE APP CON 126.3 256.7</p>	<p>CLNC DEL 121.7</p>	<p>UNICOM 123.0 (CTAF)</p>
--	----------------------------------	---------------------------------------

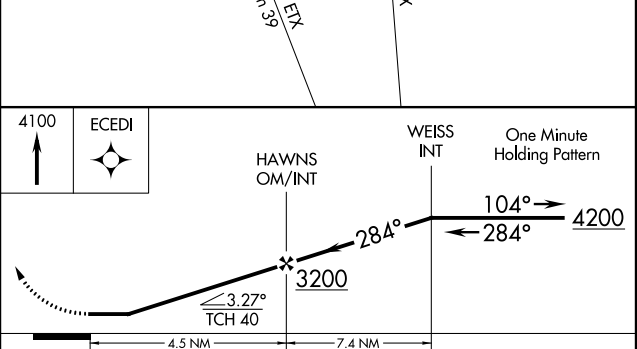


ELEV 1603	TDZE 1603
------------------	------------------

REIL Rwy 10
MRL Rwy 10-28

FAF to MAP 4.5 NM

Knots	60	90	120	150	180
Min:Sec	4:30	3:00	2:15	1:48	1:30



CATEGORY	A	B	C	D
S-LOC 28	2300-1	697 (700-1)	2300-1 3/4	697 (700-1 3/4)
CIRCLING	2300-1 697 (700-1)	2380-1 777 (800-1)	2480-2 1/2 877 (900-2 1/2)	2520-3 917 (1000-3)

NE-4, 28 MAR 2019 to 25 APR 2019

NE-4, 28 MAR 2019 to 25 APR 2019