

WAAS CH 86240 W10A	APP CRS 104°	Rwy Idg TDZE Apt Elev	4898 1603 1603
--	------------------------	-----------------------------	---

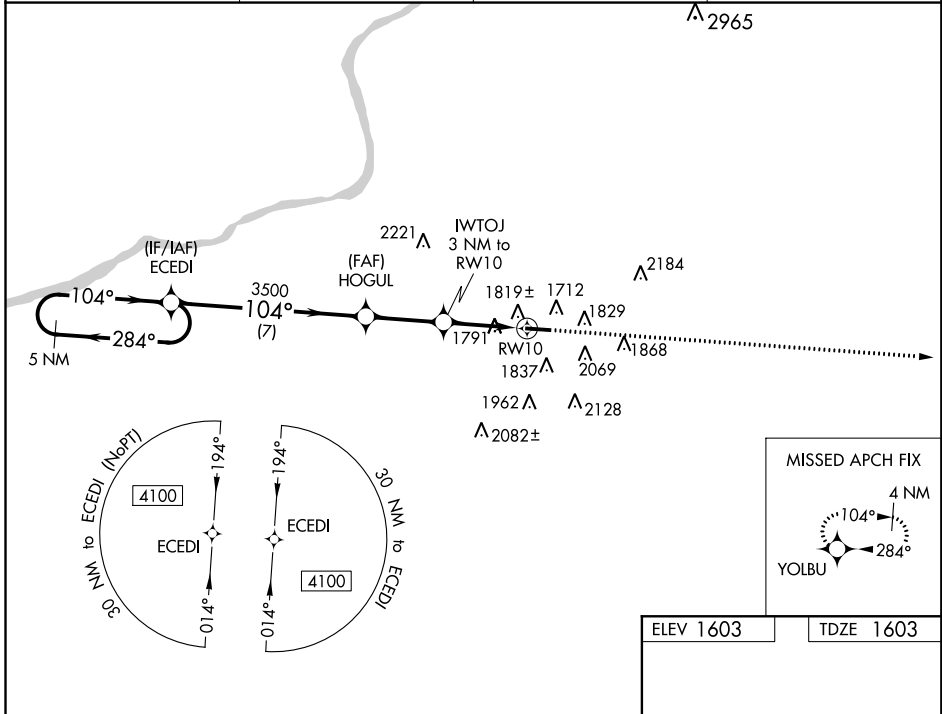
RNAV (GPS) RWY 10

HAZLETON RGNL (HZL)

▼ For uncompensated Baro-VNAV systems, LNAV/VNAV NA below -18°C (0°F) or above 54°C (130°F).
▲ DME/DME RNP-0.3 NA. When local altimeter setting not received, use Wilkes-Barre/Scranton Intl altimeter setting and increase all DA 146 feet and all MDA 160 feet; increase LPV all Cats visibility 1 mile, increase LNAV/VNAV all Cats visibility 7/8 mile, increase LNAV Cats C/D visibility 3/8 mile, and increase Circling Cat B visibility 1/4 mile and Cat C visibility 1/2 mile. Helicopter visibility reduction below 3/4 SM NA. Baro-VNAV and VDP NA when using Wilkes-Barre/Scranton Intl altimeter setting.

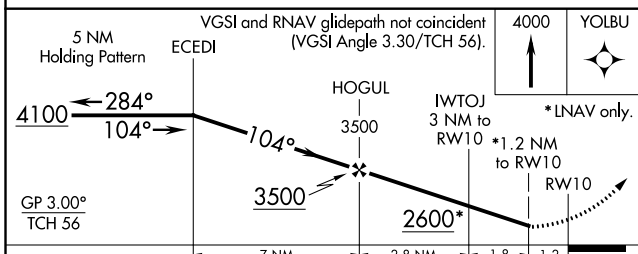
MISSED APPROACH: Climb to 4000 direct YOLBU and hold.

AWOS-3 119.975	WILKES-BARRE APP CON 126.3 256.7	CLNC DEL 121.7	UNICOM 123.0 (CTAF) 0
--------------------------	--	--------------------------	---------------------------------



NE-4, 28 MAR 2019 to 25 APR 2019

NE-4, 28 MAR 2019 to 25 APR 2019



ELEV 1603	TDZE 1603
-----------	-----------

CATEGORY	A	B	C	D	
LPV DA		2064-1 1/2	461 (500-1 1/2)		
LNAV/VNAV DA		2093-1 5/8	490 (500-1 5/8)		
LNAV MDA	2080-1	477 (500-1)	2080-1 3/8	477 (500-1 3/8)	
CIRCLING	2140-1 537 (600-1)	2380-1 777 (800-1)	2480-2 1/2 877 (900-2 1/2)	2520-3 917 (1000-3)	REIL Rwy 10 MIRL Rwy 10-28 0