


LOC I-FOG 110.3	APP CRS 321°	Rwy Idg TDZE Apt Elev	7976 222 258
---------------------------	------------------------	-----------------------------	---

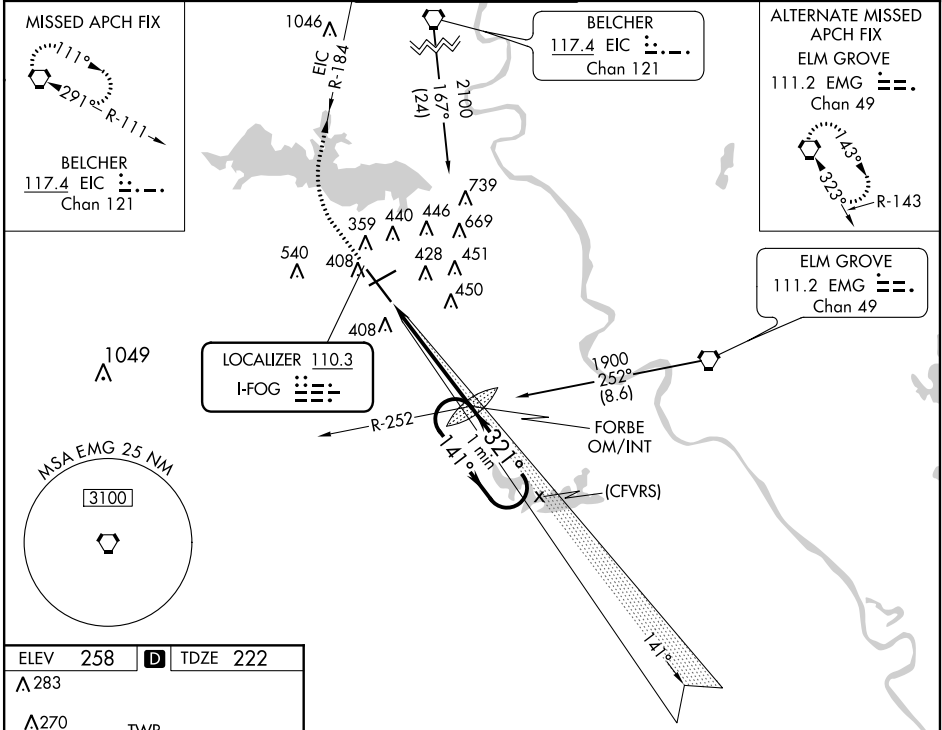
ILS or LOC RWY 32

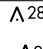








SHREVEPORT RGNL (SHV)

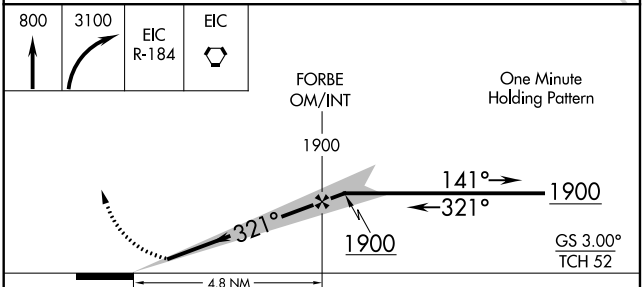
⚠ Inop table does not apply to S-ILS 32 all Cats.
⚠ For inop ALS, increase S-LOC 32 Cat A and B visibility to RVR 5500 and Cat C and D visibility to 1 3/8 SM.
ASR Rwy 32, helicopter visibility reduction below RVR 4000 NA.

MALSR  MISSED APPROACH: Climb to 800 then climbing right turn to 3100 on EIC VORTAC R-184 to EIC VORTAC and hold.

ATIS 128.45	SHREVEPORT APP CON 119.9 335.55	SHREVEPORT TOWER 121.4 236.775	GND CON 121.9 236.775	CLNC DEL 124.65
-----------------------	---	--	---------------------------------	---------------------------



ELEV 258	D	TDZE 222
 283		
 270	 TWR 339	
 299	 6202 X 150	
 318	 8330 X 200	
 306	 321° 4.8 NM from FAF	
FAF to MAP 4.8 NM		
Knots	60	90 120 150 180
Min:Sec	4:48	3:12 2:24 1:55 1:36



CATEGORY	A	B	C	D
S-ILS 32	422/40 200 (200-3/4)			
S-LOC 32	720/40	498 (500-3/4)	720/50	498 (500-1)
C CIRCLING	760-1	502 (600-1)	980-2 722 (800-2)	1100-2 3/4 842 (900-2 3/4)

SC-4, 28 MAR 2019 to 25 APR 2019

SC-4, 28 MAR 2019 to 25 APR 2019