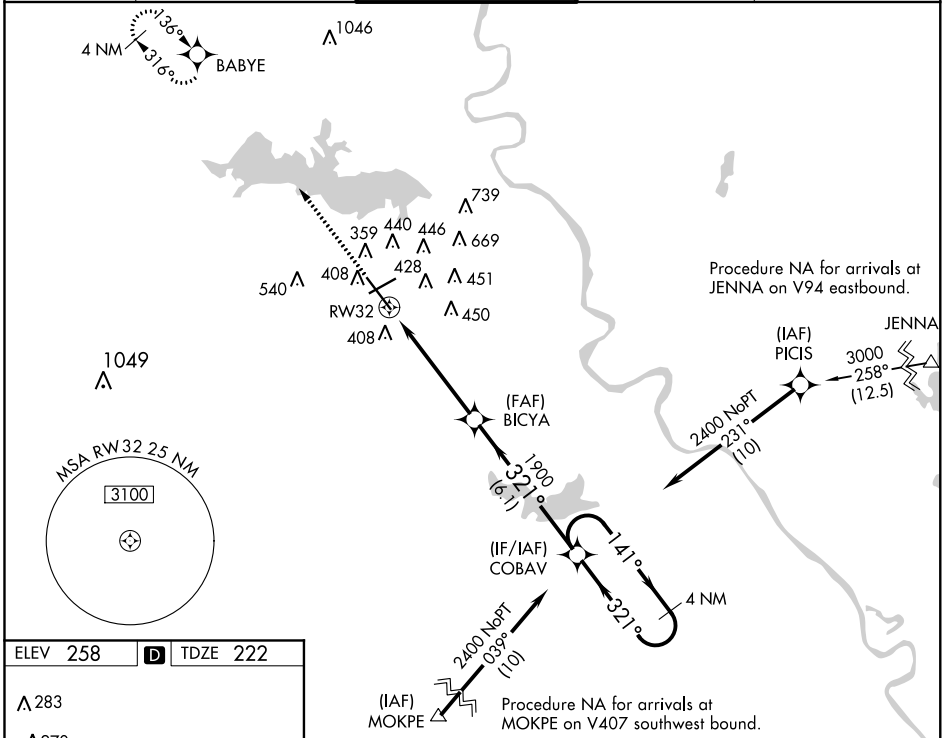


WAAS CH <b>77913</b> <b>W32A</b>	APP CRS <b>321°</b>	Rwy Idg <b>7976</b> TDZE <b>222</b> Apt Elev <b>258</b>
--	------------------------	---

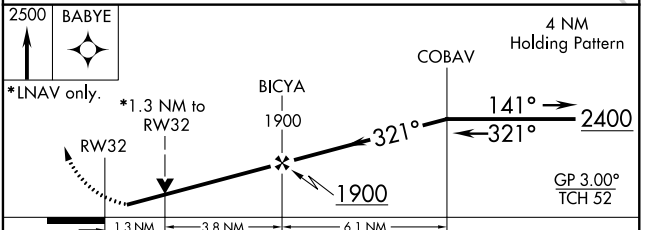
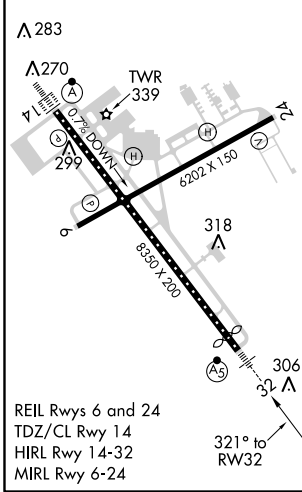
# RNAV (GPS) RWY 32

SHREVEPORT RGNL (SHV)

RNP APCH		MALSR		MISSED APPROACH: Climb to 2500 direct BABYE and hold.	
<p>▼ Rwy 32, helicopter visibility reduction below RVR 4000 NA. For uncompensated Baro-VNAV systems, LNAV/VNAV NA below -6°C or above 54°C. Inop table does not apply to LPV all Cats. For inop ALS, increase LNAV Cat A and B visibility to RVR 5500.</p>					
ATIS <b>128.45</b>	SHREVEPORT APP CON <b>119.9 335.55</b>	SHREVEPORT TOWER <b>121.4 236.775</b>	GND CON <b>121.9 236.775</b>	CLNC DEL <b>124.65</b>	



ELEV 258	<b>D</b>	TDZE 222
----------	----------	----------



CATEGORY	A	B	C	D
LPV DA		422/40	200 (200-¾)	
LNAV/VNAV DA		623/45	401 (400-7/8)	
LNAV MDA	680/40	458 (500-¾)	680/45	458 (500-7/8)
<b>C</b> CIRCLING	760-1	502 (600-1)	980-2 722 (800-2)	1100-2¾ 842 (900-2¾)

SC-4, 28 MAR 2019 to 25 APR 2019

SC-4, 28 MAR 2019 to 25 APR 2019