


LOC/DME I-LAL <b>110.1</b> Chan 38	APP CRS <b>094°</b>	Rwy Idg TDZE <b>132</b> Apt Elev <b>142</b>	<b>8414</b>
--	------------------------	---	-------------

# ILS or LOC RWY 9

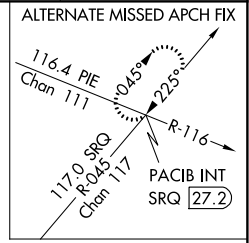
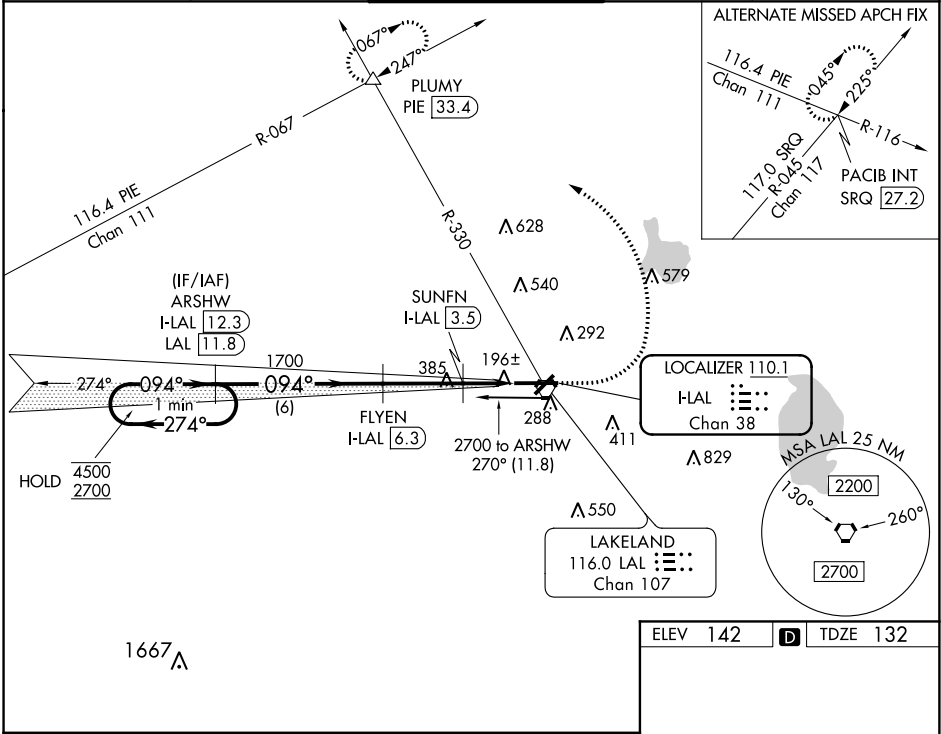
LAKELAND LINDER INTL (LAL)

**DME required.**

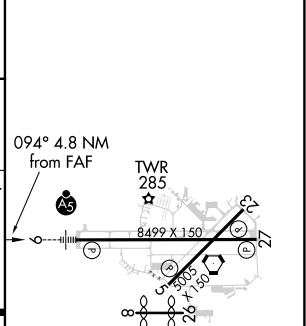
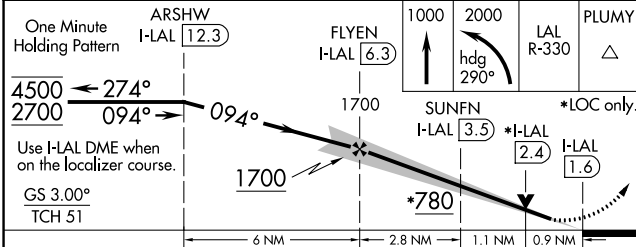
**⚠** When local altimeter setting not received, use Plant City altimeter setting and increase all DA/MDA 20 feet; increase S-LOC Cats C/D visibility 1/2 SM. For inop ALS when using Plant City altimeter setting, increase S-LOC Cats C/D visibility to 1 SM. Circling NA to Rws 8 and 26.

**MALS/R**  MISSED APPROACH: Climb to 1000 then climbing left turn to 2000 on heading 290° and on LAL VORTAC R-330 to PLUMY INT/PIE 33.4 DME and hold.

ATIS <b>118.025</b>	TAMPA APP CON <b>120.65 290.3</b>	LAKELAND TOWER ★ <b>124.5 (CTAF) 236.775</b>	GND CON <b>121.4</b>	UNICOM <b>122.95</b>
------------------------	--------------------------------------	---	-------------------------	-------------------------



ELEV 142	<b>D</b> TDZE 132
----------	-------------------



CATEGORY	A	B	C	D
S-ILS 9		332-1/2	200 (200-1/2)	
S-LOC 9		460-1/2	328 (400-1/2)	
CIRCLING	600-1 458 (500-1)	660-1 518 (600-1)	660-1 1/2 518 (600-1 1/2)	700-2 558 (600-2)

HIRL Runways 5-23 and 9-27 **Ⓛ**

SE-3, 28 MAR 2019 to 25 APR 2019

SE-3, 28 MAR 2019 to 25 APR 2019