

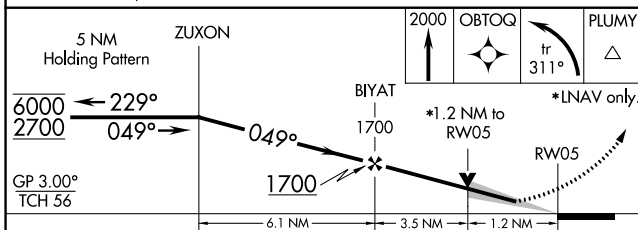
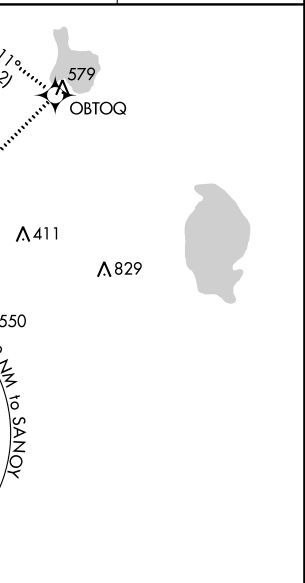
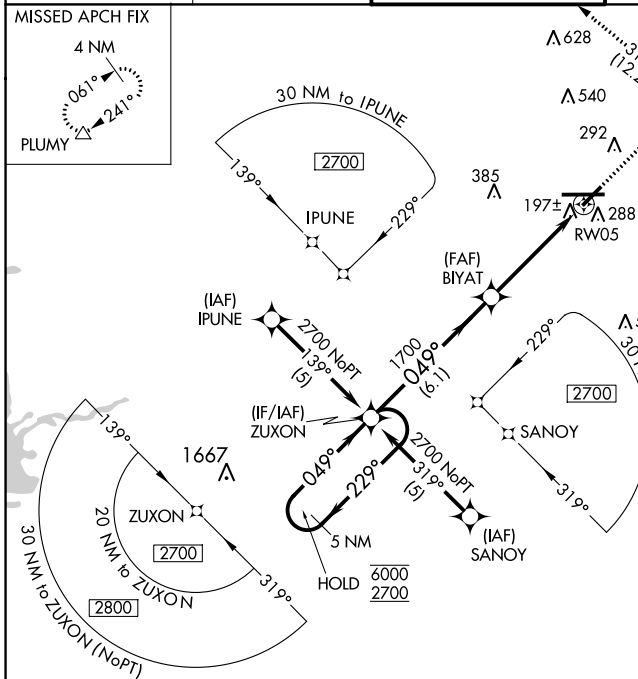
WAAS CH 42805 W05A	APP CRS 049°	Rwy Idg TDZE 136 Apt Elev 142	5005
--	------------------------	---	-------------

RNAV (GPS) RWY 5

LAKELAND LINDER INTL (LAL)

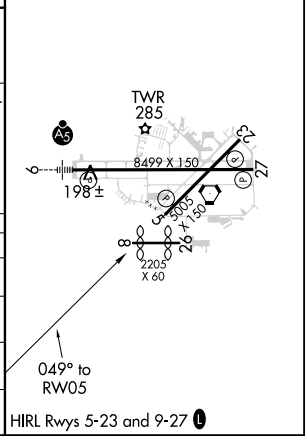
RNP APCH.	<p>⚠ For uncompensated Baro-VNAV systems, LNAV/VNAV NA below -1.5°C or above 54°C. When local altimeter setting not received, use Plant City altimeter setting and increase all DA/MDA 20 feet and LNAV Cat C/D visibility $\frac{1}{8}$ SM. Baro-VNAV and VDP NA when using Plant City altimeter setting. Circling NA to Rwy 8, 26.</p>	<p>MISSED APPROACH: Climb to 2000 direct OBTOQ and left turn on track 311° to PLUMY and hold.</p>
-----------	--	---

ATIS 118.025	TAMPA APP CON 120.65 290.3	LAKELAND TOWER ★ 124.5 (CTAF) 0 236.775	GND CON 121.4	UNICOM 122.95
------------------------	--------------------------------------	---	-------------------------	-------------------------



ELEV 142	D TDZE 136
----------	-------------------

CATEGORY	A	B	C	D
LPV DA		336- $\frac{3}{4}$	200 (200- $\frac{3}{4}$)	
LNAV/VNAV DA		505-1 $\frac{1}{4}$	369 (400-1 $\frac{1}{4}$)	
LNAV MDA	560-1	424 (500-1)	560-1 $\frac{1}{4}$	424 (500-1 $\frac{1}{4}$)
CIRCLING	600-1 458 (500-1)	660-1 518 (600-1)	660-1 $\frac{1}{2}$ 518 (600-1 $\frac{1}{2}$)	700-2 558 (600-2)



SE-3, 28 MAR 2019 to 25 APR 2019

SE-3, 28 MAR 2019 to 25 APR 2019