

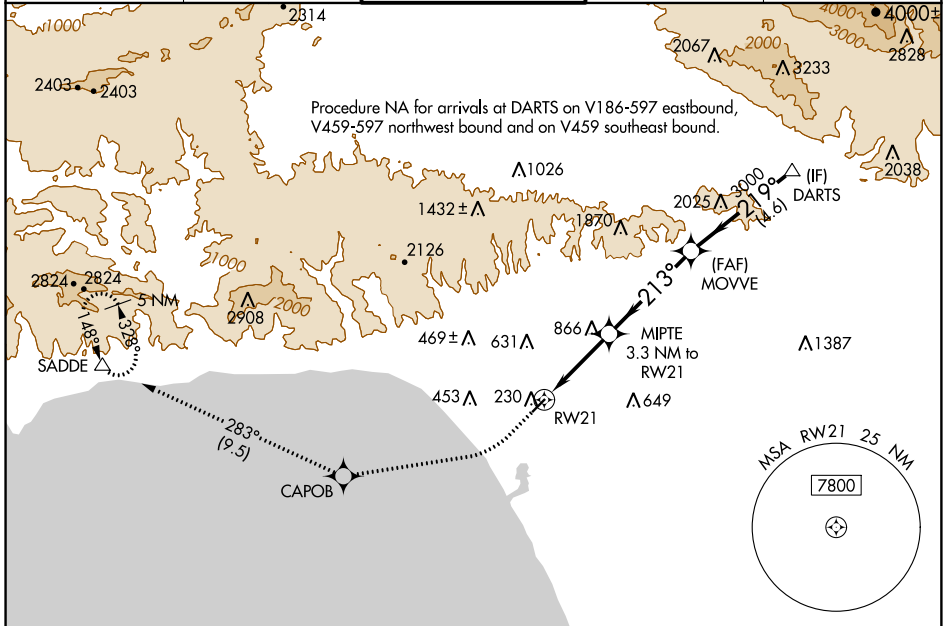
WAAS CH <b>90339</b> <b>W21A</b>	APP CRS <b>213°</b>	Rwy ldg TDZE Apt Elev	<b>3500</b> <b>170</b> <b>170</b>
--	------------------------	-----------------------------	---

# RNAV (GPS) RWY 21

SANTA MONICA MUNI (SMO)

RNP APCH.	MISSED APPROACH: Climb to 600 then climbing right turn to 5000 direct CAPOB and on track 283° to SADDE and hold, continue climb-in-hold to 5000.
-----------	--

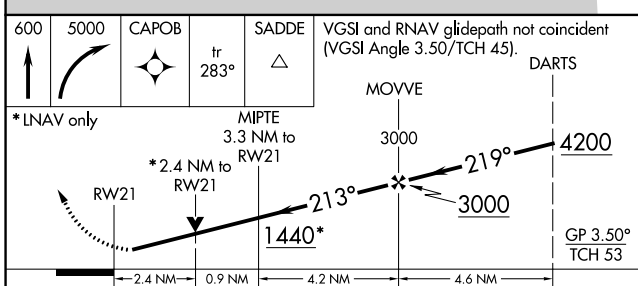
ATIS <b>119.15</b>	SOCAL APP CON <b>128.5 235.975</b>	SANTA MONICA TOWER* <b>120.1</b> (CTAF) <b>257.8</b>	GND CON <b>121.9</b>	UNICOM <b>122.95</b>
-----------------------	---------------------------------------	---	-------------------------	-------------------------



SW-3, 28 MAR 2019 to 25 APR 2019

SW-3, 28 MAR 2019 to 25 APR 2019

## RADAR REQUIRED



ELEV 170	<b>D</b> TDZE 170
----------	-------------------