

VOR/DME SMO <b>110.8</b> Chan 45	APP CRS <b>212°</b>	Rwy Idg TDZE Apt Elev	<b>N/A</b> <b>N/A</b> <b>170</b>
--	------------------------	-----------------------------	--

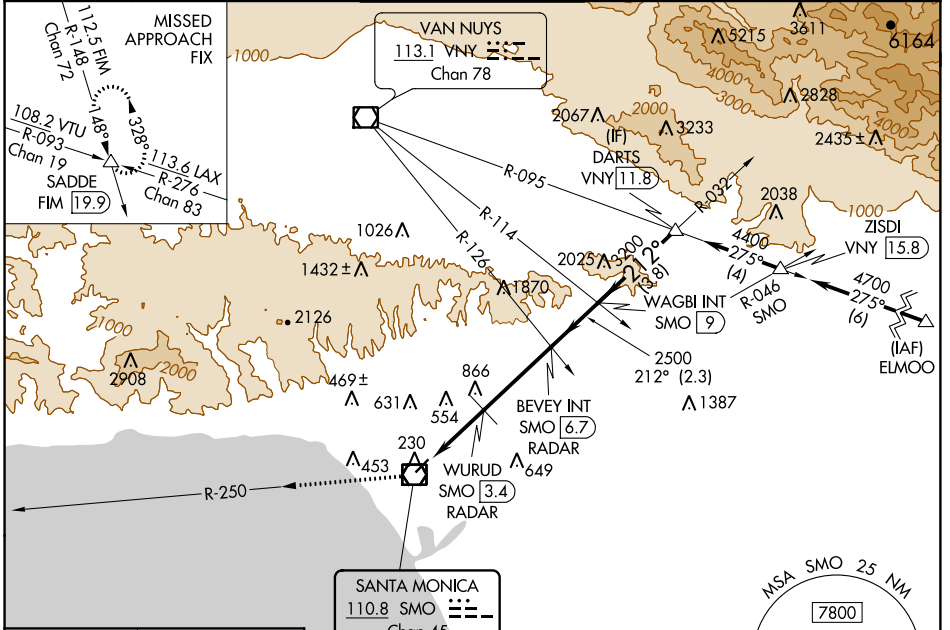
# VOR-A

SANTA MONICA MUNI (SMO)

**NA** Procedure NA for arrivals at ELMOO on V186 southeast bound. Circling NA northwest of Rwy 3-21.

MISSED APPROACH: Climb to 5000 on SMO VOR/DME R-250 and on FIM VORTAC R-148 to SADDE INT/19.9 DME and hold, continue climb-in-hold to 5000.

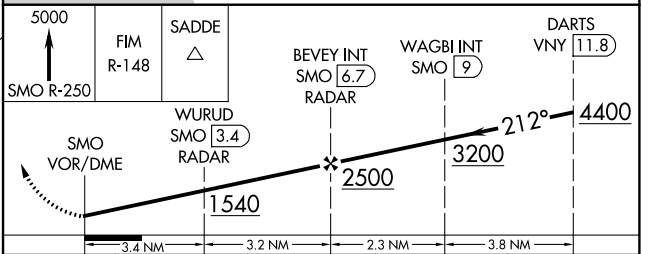
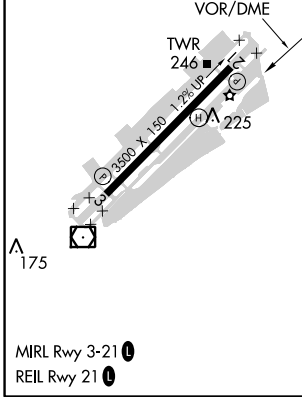
ATIS <b>119.15</b>	SOCAL APP CON <b>128.5 235.975</b>	SANTA MONICA TOWER * <b>120.1 (CTAF) 257.8</b>	GND CON <b>121.9</b>	UNICOM <b>122.95</b>
-----------------------	---------------------------------------	---	-------------------------	-------------------------



SW-3, 28 MAR 2019 to 25 APR 2019

SW-3, 28 MAR 2019 to 25 APR 2019

ELEV 170	<b>D</b>
----------	----------



CATEGORY	A	B	C	D
<b>CIRCLING</b>	1540-1¼ 1370 (1400-1¼)	1540-1½ 1370 (1400-1½)	1540-3	1370 (1400-3)
WURUD FIX MINIMUMS				
<b>CIRCLING</b>	860-1	690 (700-1)	1180-3	1010 (1100-3)