

# ILS or LOC RWY 14

BOIRE FIELD (ASH)

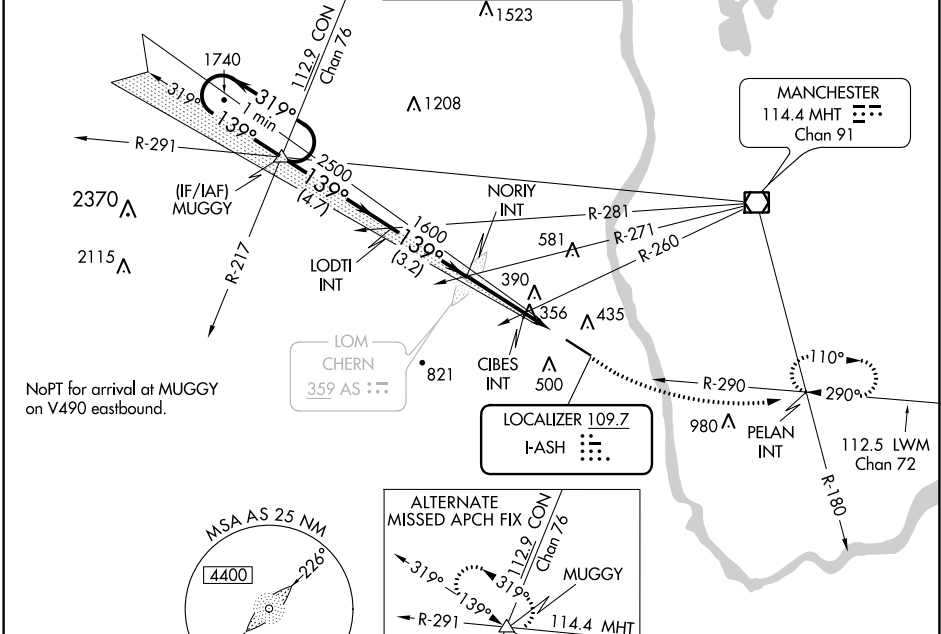
LOC I-ASH <b>109.7</b>	APP CRS <b>139°</b>	Rwy Idg TDZE Apt Elev	<b>5650</b> <b>200</b> <b>200</b>
---------------------------	------------------------	-----------------------------	---

**⚠** When local altimeter setting not received, use Manchester altimeter setting: increase all DA to 432 feet; increase all MDA 40 feet and all S-LOC 14 Cat C/D visibilities 1/8 mile and all Circling Cat D visibilities 1/4 mile. For inoperative MALSR when using Manchester altimeter setting, increase CIBES fix minimums S-LOC 14 Cat C/D visibility to 1 1/8 mile.

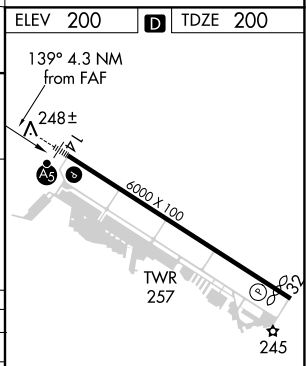
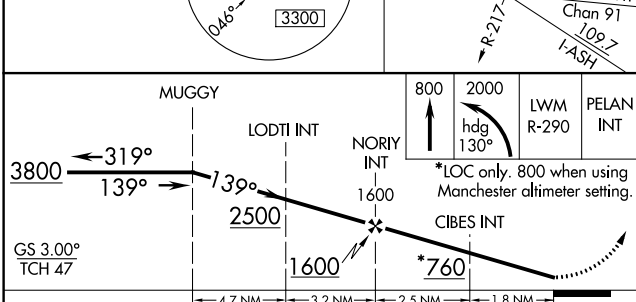
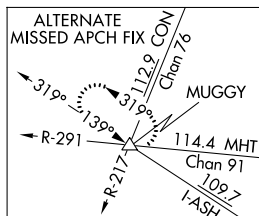
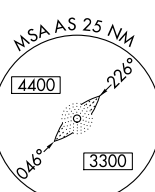
**MALSR**

**MISSED APPROACH:** Climb to 800 then climbing left turn to 2000 on heading 130° and LWM VOR/DME R-290 to PELAN INT and hold.

ATIS <b>125.1</b>	BOSTON APP CON <b>124.9 269.075</b>	NASHUA TOWER ★ <b>133.2 (CTAF) 0</b>	GND CON <b>121.8</b>	CLNC DEL <b>121.8</b>
----------------------	--	---	-------------------------	--------------------------



NoPT for arrival at MUGGY on V490 eastbound.



CATEGORY	A	B	C	D
S-ILS 14	400-1/2 200 (200-1/2)			
S-LOC 14	760-1/2	560 (600-1/2)	760-1 1/8	560 (600-1 1/8)
<b>C</b> CIRCLING	820-1 620 (700-1)	840-1 640 (700-1)	900-2 700 (700-2)	1000-2 1/2 800 (800-2 1/2)
CIBES FIX MINIMUMS (DUAL VOR RECEIVERS REQUIRED)				
S-LOC 14	660-1/2	460 (500-1/2)	660-7/8	460 (500-7/8)
<b>C</b> CIRCLING	820-1 620 (700-1)	840-1 640 (700-1)	900-2 700 (700-2)	1000-2 1/2 800 (800-2 1/2)

HIRL Rwy 14-32 **0**  
REIL Rwy 32 **0**

FAF to MAP 4.3 NM

Knots	60	90	120	150	180
Min:Sec	4:18	2:52	2:09	1:43	1:26

NE-1, 28 MAR 2019 to 25 APR 2019

NE-1, 28 MAR 2019 to 25 APR 2019