



WAAS CH <b>97730</b> <b>W14A</b>	APP CRS <b>139°</b>	Rwy Idg TDZE <b>200</b> Apt Elev <b>200</b>	<b>5650</b>
--	------------------------	---	-------------

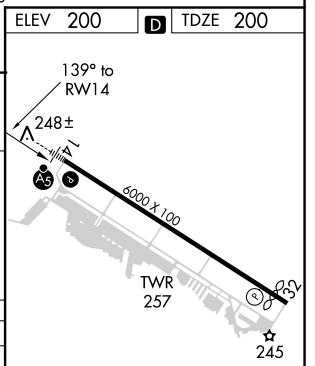
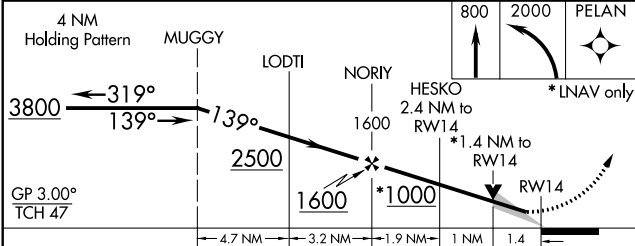
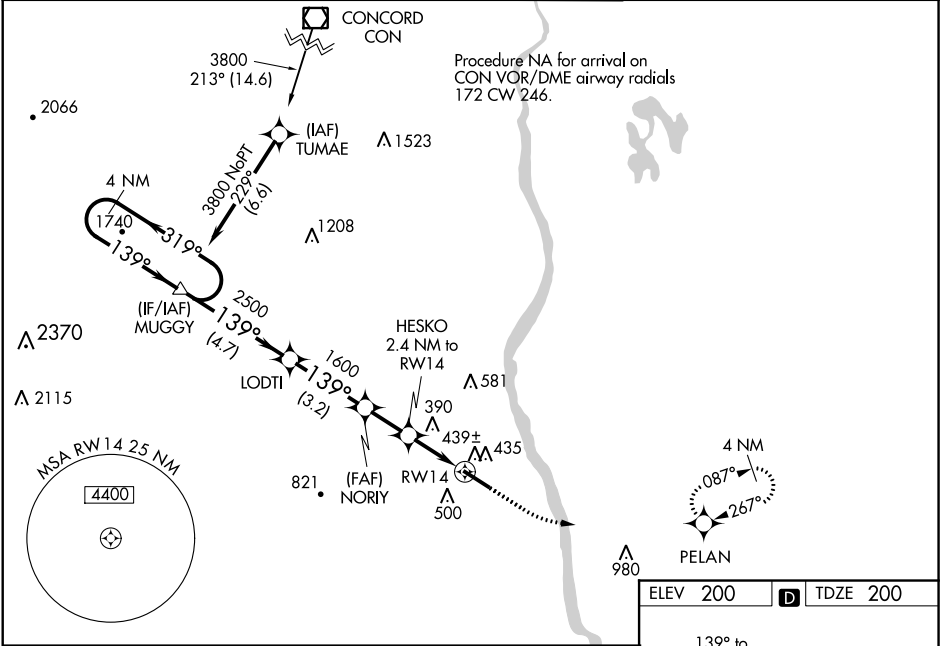
# RNAV (GPS) RWY 14

BOIRE FIELD (ASH)


**⚠** For uncompensated Baro-VNAV systems, LNAV/VNAV NA below -15°C (5°F) or above 54°C (130°F). DME/DME RNP-0.3 NA. When local altimeter setting not received, use Manchester altimeter setting: increase LPV all Cats DA to 432 feet, LNAV/VNAV all Cats DA to 652 feet and LNAV/VNAV all Cats visibility 1/2 mile; increase all MDA 40 feet and Circling Cat D visibility 1/4 mile. Baro-VNAV and VDP NA when using Manchester altimeter setting. For inop MALSR, increase LNAV/VNAV all Cats and LNAV Cat C/D visibility to 1 1/2 mile. For inop MALSR when using Manchester altimeter setting, increase LNAV/VNAV all Cats visibility to 1 1/2 mile.


**MALSR**  MISSED APPROACH: Climb to 800 then climbing left turn to 2000 direct PELAN and hold.

ATIS <b>125.1</b>	BOSTON APP CON <b>124.9 269.075</b>	NASHUA TOWER * <b>133.2 (CTAF)</b> 	GND CON <b>121.8</b>	CLNC DEL <b>121.8</b>
----------------------	--	---	-------------------------	--------------------------



CATEGORY	A	B	C	D
LPV DA		400-1/2	200 (200-1/2)	
LNAV/VNAV DA		620-1	420 (500-1)	
LNAV MDA	700-1/2	500 (500-1/2)	700-1	500 (500-1)
<b>C</b> CIRCLING	820-1 620 (700-1)	840-1 640 (700-1)	900-2 700 (700-2)	1000-2 1/2 800 (800-2 1/2)

HIRL Rwy 14-32 

REIL Rwy 32 

NE-1, 28 MAR 2019 to 25 APR 2019

NE-1, 28 MAR 2019 to 25 APR 2019