

VOR/DME LWM 112.5 Chan 72	APP CRS 292°	Rwy Idg TDZE 193 Apt Elev 200	5650
---	------------------------	---	-------------

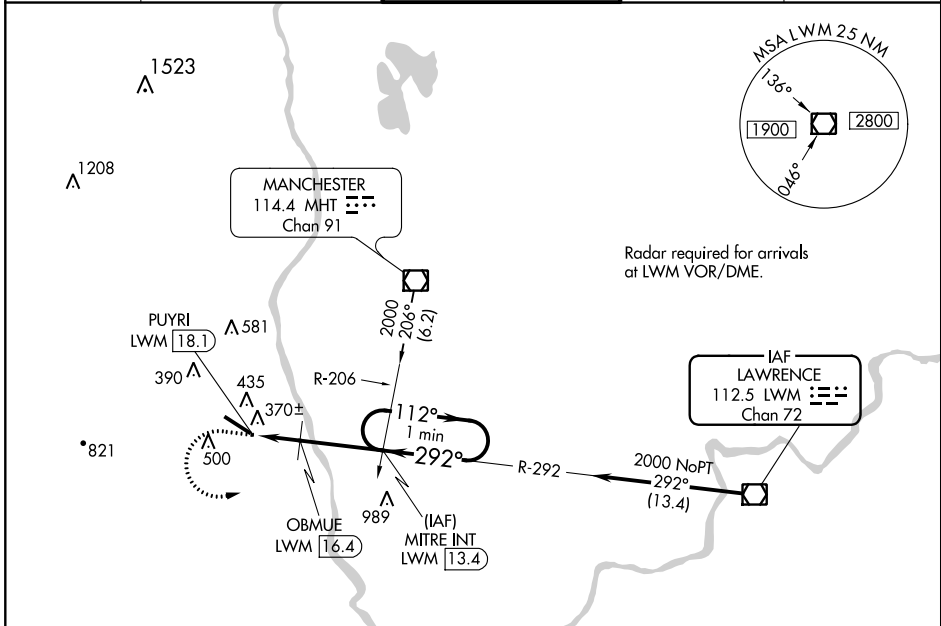
VOR RWY 32

BOIRE FIELD (ASH)

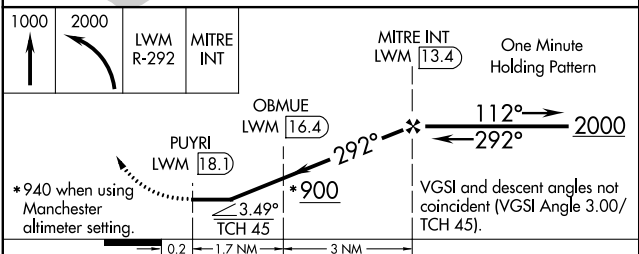
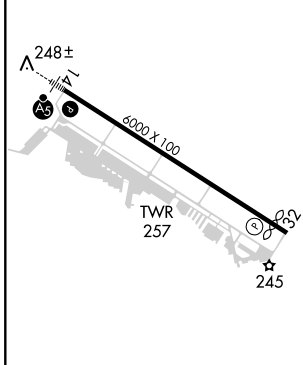
⚠ When local altimeter setting not received, use Manchester altimeter setting and increase all MDA 40 feet. Increase S-32 Cat B and Circling Cat B/C/D visibility ½ mile. OBMUE Fix minimums when using Manchester altimeter setting, increase Circling Cat C/D visibility ½ mile. Helicopter visibility reduction below 1 SM NA. Straight-in and Circling to Rwy 32 NA at night.

MISSED APPROACH: Climb to 1000 then climbing left turn to 2000 on LWM VOR/DME R-292 to MITRE INT/13.4 DME and hold.

ATIS 125.1	BOSTON APP CON 124.9 269.075	NASHUA TOWER* 133.2 (CTAF) 0	GND CON 121.8	CLNC DEL 121.8
----------------------	--	--	-------------------------	--------------------------



ELEV 200	TDZE 193
----------	----------



CATEGORY	A	B	C	D
S-32	900-1 707 (700-1)		900-2 707 (700-2)	
C CIRCLING	900-1 700 (700-1)		900-2 700 (700-2)	1000-2½ 800 (800-2½)
OBMUE FIX MINIMUMS (DME REQUIRED)				
S-32	640-1 447 (500-1)		640-1½ 447 (500-1½)	
C CIRCLING	820-1 620 (700-1)	840-1 640 (700-1)	900-2 700 (700-2)	1000-2½ 800 (800-2½)

HIRL Rwy 14-32					
REIL Rwy 32					
FAF to MAP 4.7 NM					
Knots	60	90	120	150	180
Min:Sec	4:42	3:08	2:21	1:53	1:34

NE-1, 28 MAR 2019 to 25 APR 2019

NE-1, 28 MAR 2019 to 25 APR 2019