

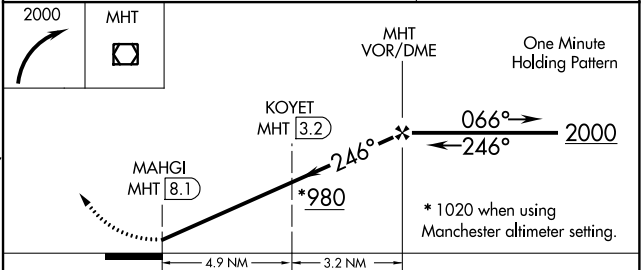
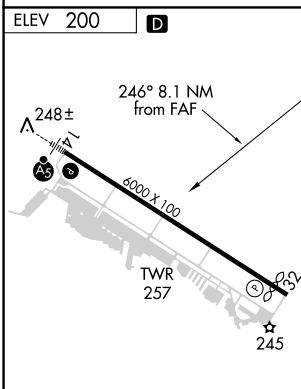
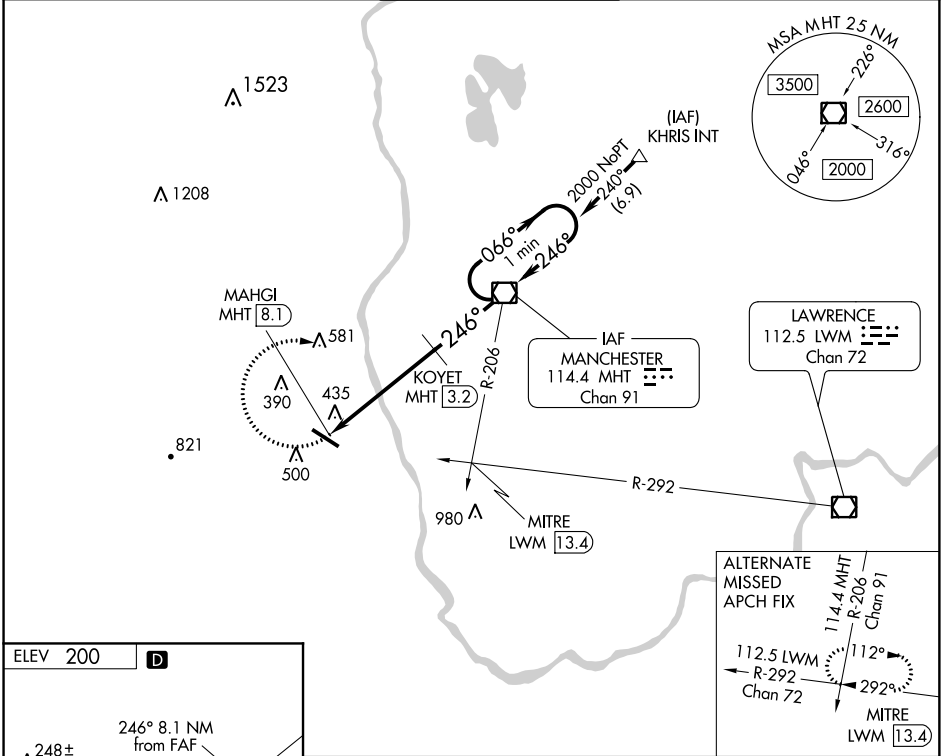
VOR/DME MHT <b>114.4</b> Chan <b>91</b>	APP CRS <b>246°</b>	Rwy Idg TDZE Apt Elev	<b>N/A</b> <b>N/A</b> <b>200</b>
---	------------------------	-----------------------------	--

**VOR-A**  
BOIRE FIELD (ASH)

**⚠** When local altimeter not received, use Manchester altimeter setting and increase all MDA 40 feet and Circling all Cats visibilities ¼ mile and KOYET Fix Minimums Cat D visibility ¼ mile.

**MISSED APPROACH:** Climbing right turn to 2000 direct MHT VOR/DME and hold.

ATIS <b>125.1</b>	BOSTON APP CON <b>124.9 269.075</b>	NASHUA TOWER ★ <b>133.2 (CTAF) 0</b>	GND CON <b>121.8</b>	CLNC DEL <b>121.8</b>
----------------------	--	---	-------------------------	--------------------------



HIRL Rwy 14-32 0	REIL Rwy 32 0	FAF to MAP 8.1 NM			
Knots	60	90	120	150	180
Min:Sec	8:06	5:24	4:03	3:14	2:42
CATEGORY	A	B	C	D	
<b>C</b> CIRCLING	980-1	780 (800-1)	980-2¼ 780 (800-2¼)	1000-2½ 800 (800-2½)	
KOYET FIX MINIMUMS					
<b>C</b> CIRCLING	840-1	640 (700-1)	900-2 700 (700-2)	1000-2 ½ 800 (800-2½)	

NE-1, 28 MAR 2019 to 25 APR 2019

NE-1, 28 MAR 2019 to 25 APR 2019