

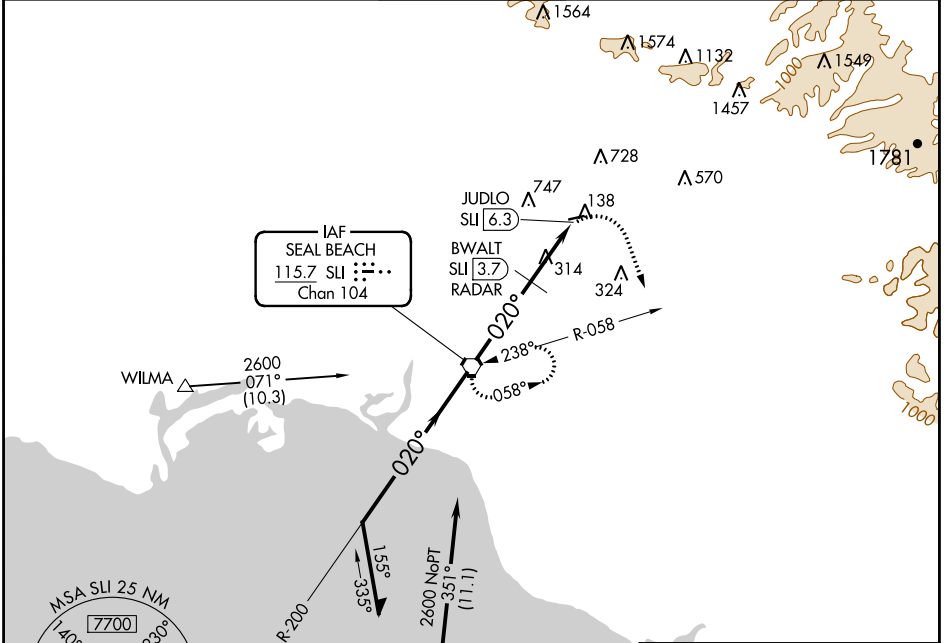
VORTAC SLI <b>115.7</b> Chan <b>104</b>	APP CRS <b>020°</b>	Rwy Idg TDZE Apt Elev	<b>N/A</b> <b>N/A</b> <b>96</b>
---	------------------------	-----------------------------	---------------------------------------

**VOR-A**  
FULLERTON MUNI (FUL)

**▽** Maximum entry altitude 6000.  
**▲** Night landing: Rwy 6 NA.  
Helicopter visibility reduction below 1 SM NA.

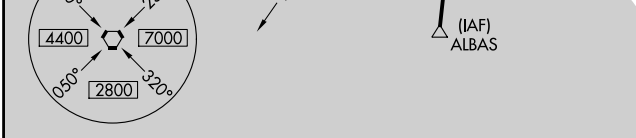
MISSED APPROACH: Climbing right turn to 2600 via heading 145° and SLI R-058 to SLI VORTAC and hold.

ATIS <b>125.05</b>	SOCAL APP CON <b>125.35 316.125</b>	<b>FULLERTON TOWER*</b> <b>119.1 (CTAF)</b> <b>0</b>	GND CON <b>121.8</b>	UNICOM <b>122.95</b>
-----------------------	--	---	-------------------------	-------------------------

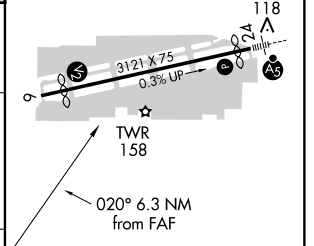
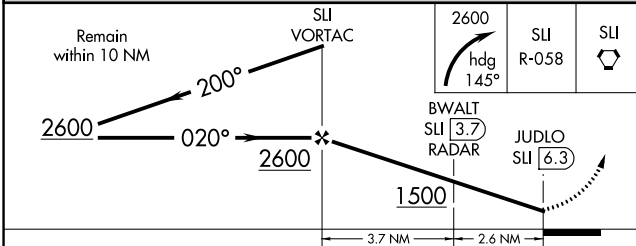


SW-3, 28 MAR 2019 to 25 APR 2019

SW-3, 28 MAR 2019 to 25 APR 2019



ELEV <b>96</b>
----------------



CATEGORY	A	B	C	D
CIRCLING	1500-1¼ 1404 (1500-1¼)	1500-1½ 1404 (1500-1½)	NA	
BWALT FIX MINIMUMS				
CIRCLING	760-1 664 (700-1)	840-1¼ 744 (800-1¼)	NA	

FAF to MAP 6.3 NM					
Knots	60	90	120	150	180
Min:Sec	6:18	4:12	3:09	2:31	2:06