

WAAS CH <b>50311</b> <b>W05A</b>	APP CRS <b>050°</b>	Rwy Idg TDZE Apt Elev	<b>3999</b> <b>1906</b> <b>1915</b>
--	------------------------	-----------------------------	---

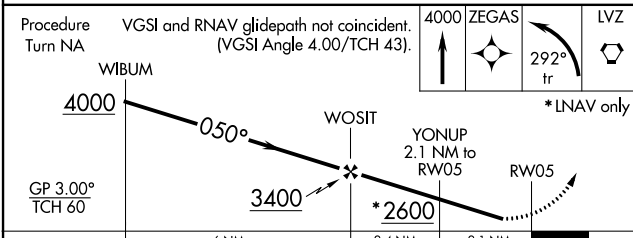
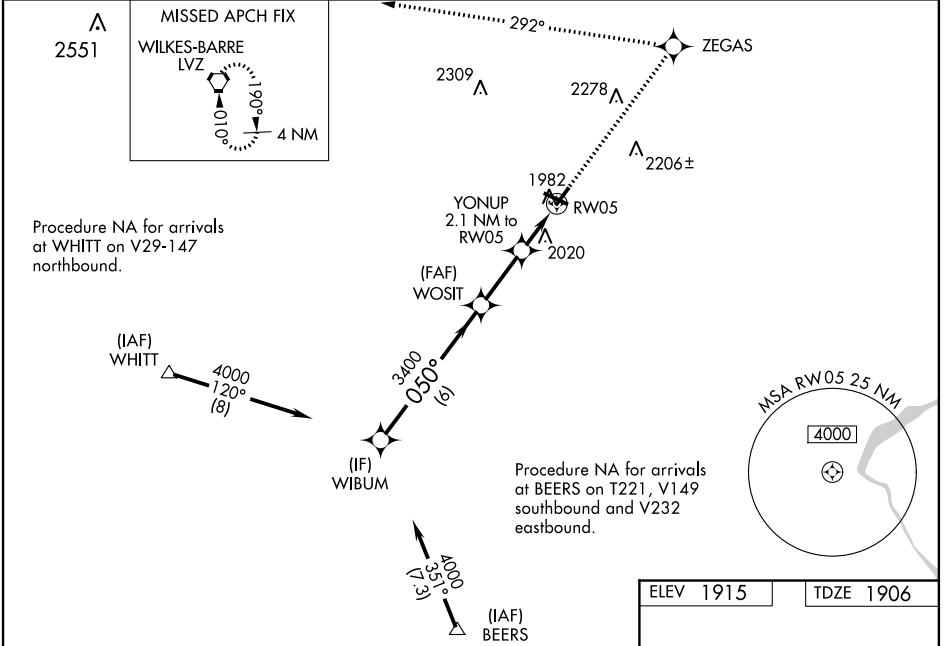
# RNAV (GPS) RWY 5

POCONO MOUNTAINS MUNI (MPO)

**⚠** Baro-VNAV NA when using Wilkes-Barre/Scranton altimeter setting. For uncompensated Baro-VNAV systems, LNAV/VNAV NA below -18°C (0°F) or above 45°C (113°F).  
**⚠** DME/DME RNP-0.3 NA. Rwy 5 helicopter visibility reduction below ¾ SM NA. When local altimeter setting not received, use Wilkes-Barre/Scranton altimeter setting: increase LPV DA to 2339 feet, LNAV/VNAV DA to 2431 feet and all visibilities ¼ SM; increase all MDAs 180 feet and visibility Cat C and D ½ SM. Circling Rwy 23 NA at night.

**MISSED APPROACH:** Climb to 4000 direct ZEGAS and left turn via 292° track to LVZ VORTAC and hold.

ASOS <b>120.275</b>	WILKES-BARRE APP CON <b>126.3 256.7</b>	CLNC DEL <b>125.3</b>	UNICOM <b>122.7 (CTAF) 0</b>
------------------------	--	--------------------------	---------------------------------



ELEV 1915	TDZE 1906
-----------	-----------

REIL 31  
REIL Rwy 5, 13, and 23 0  
MIRL Rwy 5-23 and 13-31 0

CATEGORY	A	B	C	D
LPV DA	2160-1		254 (300-1)	
LNAV/VNAV DA	2252-1¼		346 (400-1¼)	
LNAV MDA	2320-1	414 (500-1)	2320-1¼	414 (500-1¼)
<b>C</b> CIRCLING	2480-1 565 (600-1)	2500-1 585 (600-1)	2600-2 685 (700-2)	2660-2½ 745 (800-2½)

NE-4, 28 MAR 2019 to 25 APR 2019

NE-4, 28 MAR 2019 to 25 APR 2019