

VORTAC LVZ <b>111.6</b> Chan 53	APP CRS <b>131°</b>	Rwy Idg TDZE Apt Elev	<b>4500</b> <b>1885</b> <b>1915</b>
---------------------------------------	------------------------	-----------------------------	-------------------------------------------

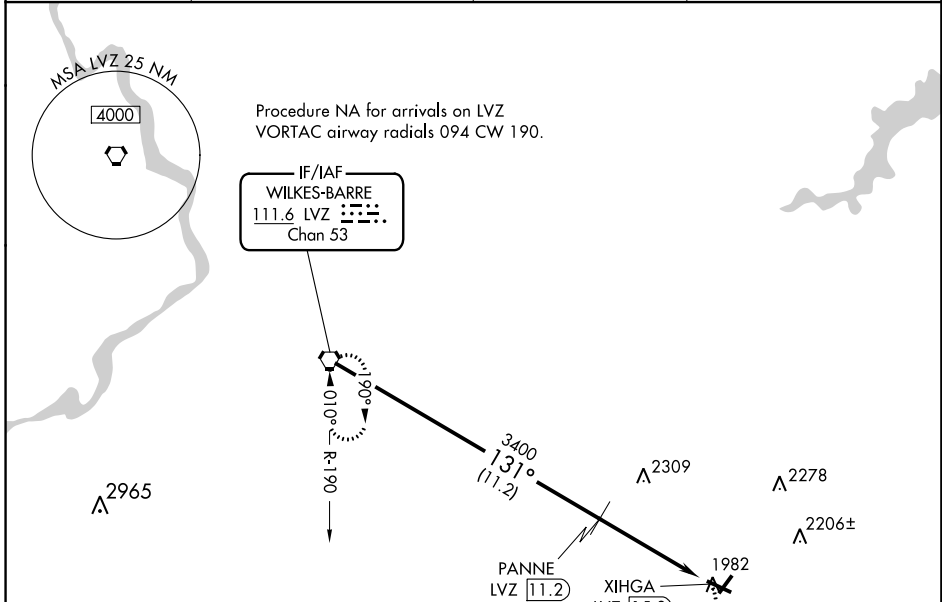
# VOR/DME RWY 13

POCONO MOUNTAINS MUNI (MPO)

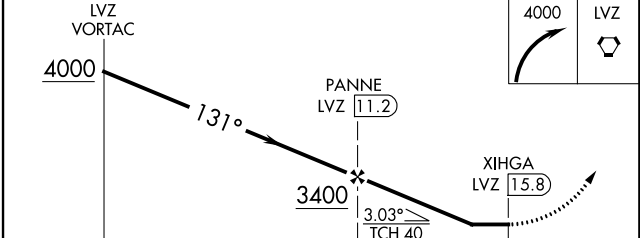
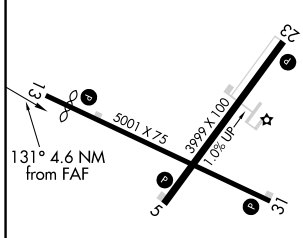
**⚠** Circling Rwy 23 NA at night. Helicopter visibility reduction below 3/4 SM NA. When local altimeter setting not received, use Wilkes-Barre/Scranton altimeter setting and increase all MDA 180 feet; increase S-13 Cat B and Circling Cat B visibility 1/4 mile, S-13 Cats C/D visibility 3/4 mile, and Circling Cats C/D visibility 1/2 mile.

**⚠** MISSED APPROACH: Climbing right turn to 4000 direct LVZ VORTAC and hold.

ASOS <b>120.275</b>	WILKES-BARRE APP CON <b>126.3 256.7</b>	CLNC DEL <b>125.3</b>	UNICOM <b>122.7 (CTAF) 0</b>
------------------------	--------------------------------------------	--------------------------	---------------------------------



ELEV 1915	TDZE 1885
-----------	-----------



CATEGORY	A	B	C	D
S-13	2500-1	615 (600-1)	2500-1 3/4	615 (600-1 3/4)
<b>☑</b> CIRCLING	2500-1	585 (600-1)	2600-2 685 (700-2)	2660-2 1/2 745 (800-2 1/2)

REIL Rwy 31  
REIL Rws 5, 13, and 23  
MIRL Rws 5-23 and 13-31

NE-4, 28 MAR 2019 to 25 APR 2019

NE-4, 28 MAR 2019 to 25 APR 2019