

LOC/DME I-SGS 108.35 Chan 20 (Y)	APP CRS 342°	Rwy Idg TDZE Apt Elev	4002 820 821
---	------------------------	-----------------------------	---

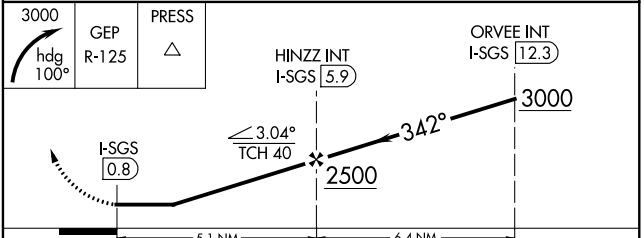
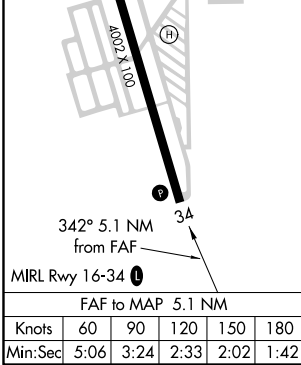
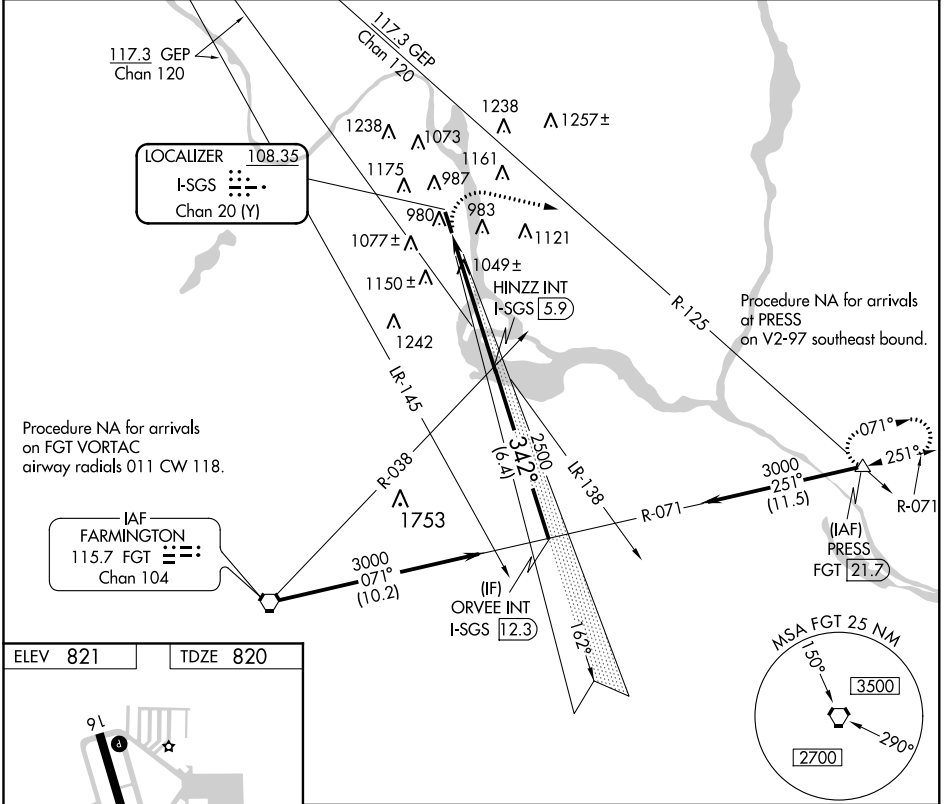
LOC RWY 34

SOUTH ST PAUL MUNI-RICHARD E FLEMING FIELD (SGS)

NA Helicopter visibility reduction below 3/4 SM NA. When local altimeter setting not received, use Minneapolis-St Paul Intl/Wold-Chamberlain altimeter setting and increase all MDA 40 feet. Increase Circling Cat C/D visibility 1/4 mile.

MISSED APPROACH: Climbing right turn to 3000 on heading 100° and on GEP VORTAC R-125 to PRESS INT/21.7 DME and hold.

AWOS-3 119.425	MINNEAPOLIS APP CON 121.2 335.65	CLNC DEL 118.2	UNICOM 122.7 (CTAF)
--------------------------	--	--------------------------	-------------------------------



CATEGORY	A	B	C	D
S-34	1300-1	480 (500-1)	1300-1 ³ / ₈	480 (500-1 ³ / ₈)
C CIRCLING	1400-1 579 (600-1)	1540-1 719 (800-1)	1540-2 719 (800-2)	1620-2 ¹ / ₂ 799 (800-2 ¹ / ₂)

LOC RWY 34

NC-1, 28 MAR 2019 to 25 APR 2019

NC-1, 28 MAR 2019 to 25 APR 2019