

WAAS CH 82716 W12A	APP CRS 118°	Rwy ldg TDZE Apt Elev	6501 918 918
--	------------------------	-----------------------------	---

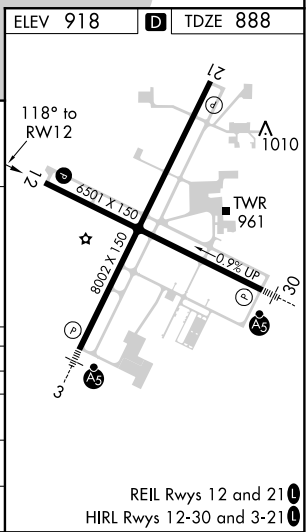
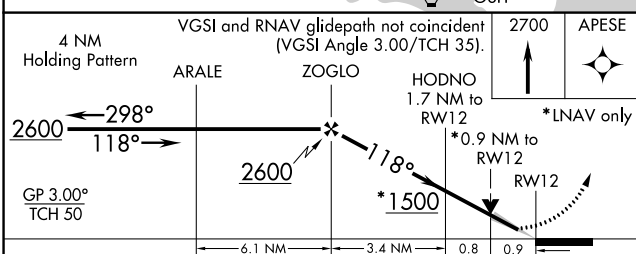
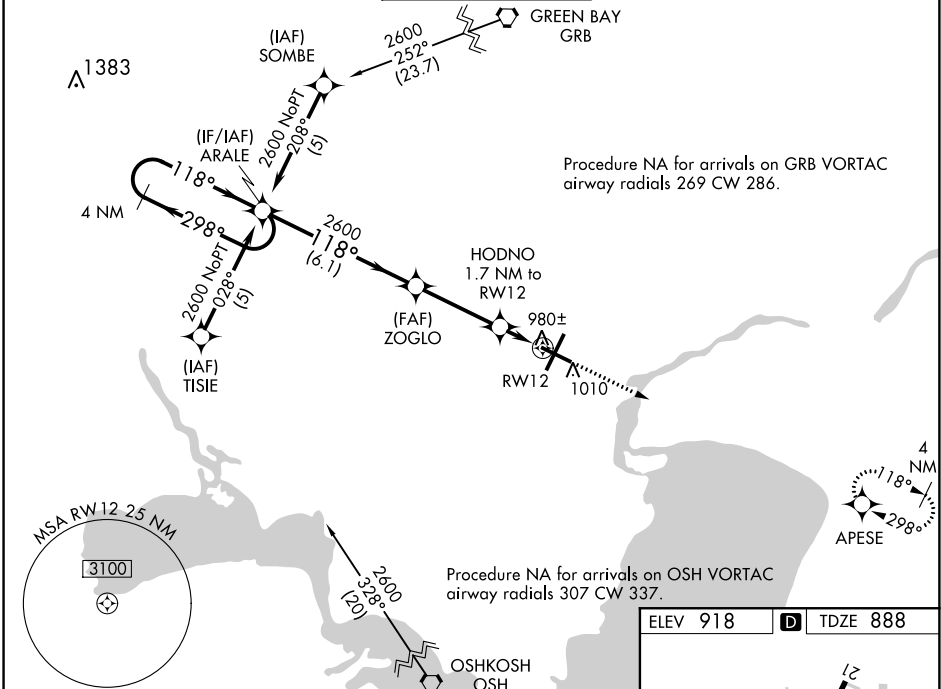
RNAV (GPS) RWY 12

APPLETON INTL (ATW)

⚠ For uncompensated Baro-VNAV systems, LNAV/VNAV NA below -16°C (4°F) or above 47°C (116°F). DME/DME RNP-0.3 NA. When local altimeter not received, use Green Bay-Austin Straubel Intl altimeter setting and increase all DA 81 feet and all MDA 100 feet. Increase LPV and LNAV/VNAV all Cats and LNAV Cat C/D visibility 1/4 mile. Baro-VNAV and VDP NA when using Green Bay-Austin Straubel altimeter setting.

MISSED APPROACH:
Climb to 2700 direct APESE and hold.

ATIS 127.15	GREEN BAY APP CON* 126.3 338.2	APPLETON TOWER* 119.6 (CTAF) 0	GND CON 121.7	UNICOM 122.95
-----------------------	--	--	-------------------------	-------------------------



CATEGORY	A	B	C	D
LPV DA		1118-3/4	200 (200-3/4)	
LNNAV/VNAV DA		1329-1 1/2	411 (500-1 1/2)	
LNNAV MDA		1240-1	322 (400-1)	
CIRCLING	1340-1 422 (500-1)	1380-1 462 (500-1)	1380-1 1/2 462 (500-1 1/2)	1480-2 562 (600-2)

EC-3, 28 MAR 2019 to 25 APR 2019

EC-3, 28 MAR 2019 to 25 APR 2019