

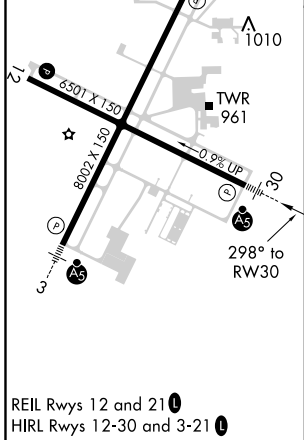
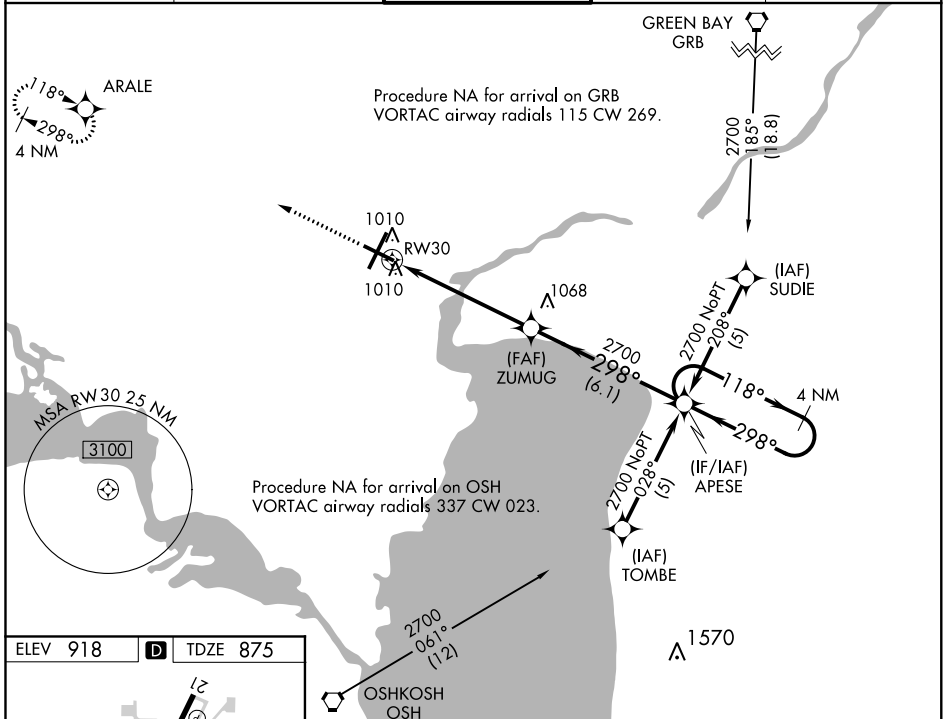
WAAS CH <b>42517</b> <b>W30A</b>	APP CRS <b>298°</b>	Rwy Idg TDZE Apt Elev	<b>6501</b> <b>875</b> <b>918</b>
--	------------------------	-----------------------------	---

# RNAV (GPS) RWY 30

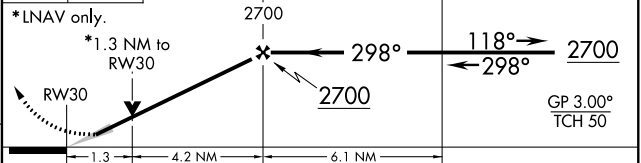
APPLETON INTL (ATW)

RNP APCH.			MALSR	MISSED APPROACH: Climb to 2600 direct ARALE and hold.
For uncompensated Baro-VNAV systems, LNAV/VNAV NA below -16°C (4°F) or above 54°C (130°F).				

ATIS <b>127.15</b>	GREEN BAY APP CON* <b>126.3 338.2</b>	APPLETON TOWER* <b>119.6</b> (CTAF)	GND CON <b>121.7</b>	UNICOM <b>122.95</b>
-----------------------	--	--	-------------------------	-------------------------



ELEV 918	<b>D</b>	TDZE 875
----------	----------	----------



*LNAV only. *1.3 NM to RW30	2700	2700	2700	2700
CATEGORY	A	B	C	D
LPV DA	1075-1/2 200 (200-1/2)			
LNAV/VNAV DA	1310-1 435 (400-1)			
LNAV MDA	1320-1/2	445 (500-1/2)	1320-7/8 445 (500-7/8)	1320-1 445 (500-1)
<b>C</b> CIRCLING	1340-1 422 (500-1)	1380-1 462 (500-1)	1400-1 1/2 482 (500-1 1/2)	1480-2 562 (600-2)

EC-3, 28 MAR 2019 to 25 APR 2019

EC-3, 28 MAR 2019 to 25 APR 2019