

WAAS CH 93800 W36A	APP CRS 004°	Rwy Idg TDZE Apt Elev	5941 795 808
--	------------------------	-----------------------------	---

RNAV (GPS) RWY 36

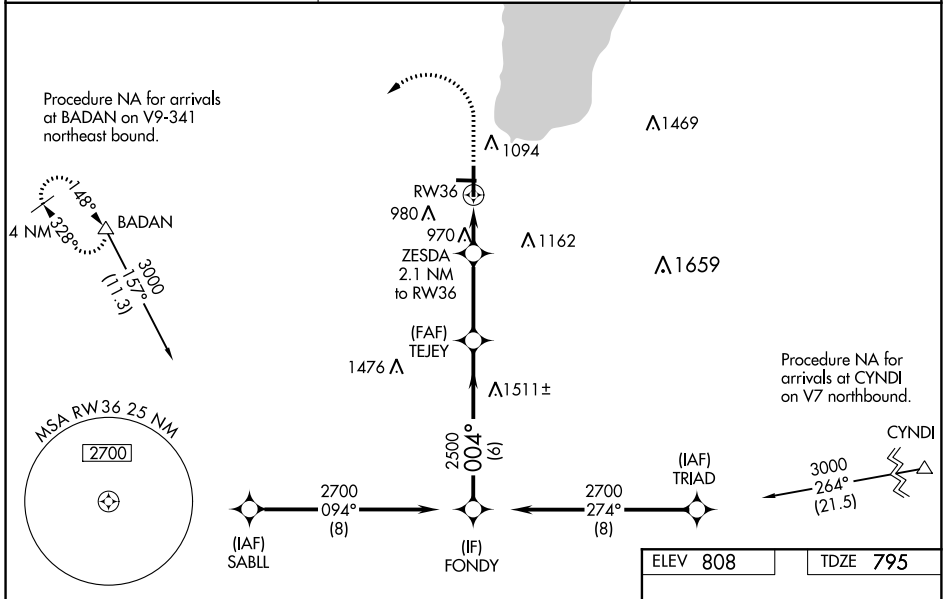
FOND DU LAC COUNTY (F.L.D)

⚠ For uncompensated Baro-VNAV systems, LNAV/VNAV NA below -21°C (-5°F) or above 54°C (130°F). Baro-VNAV and VDP NA when using Oshkosh altimeter setting.
⚠ DME/DME RNP-0.3 NA. When local altimeter setting not received, use Oshkosh altimeter setting: increase LPV DA to 1202 feet and LNAV/VNAV DA to 1260 feet and all MDA 40 feet; increase LPV visibility all Cats and LNAV/VNAV visibility all Cats ½ mile, increase Circling Cat C/D visibility ¼ mile. For inop MALSRL, increase LPV all Cats visibility 1 ¼ mile and increase LNAV Cat A/B visibility to 1 mile, and LNAV Cat C/D visibility to 1 ¾ mile. For inop MALSRL when using Oshkosh altimeter setting, increase LPV all Cats visibility to 1 ¾ mile and increase LNAV Cat A/B visibility to 1 mile. Night Landing: Rwy 9, 27 NA.



MALSRL
MISSED APPROACH:
 Climb to 1400 then climbing left turn to 3000 direct BADAN and hold.

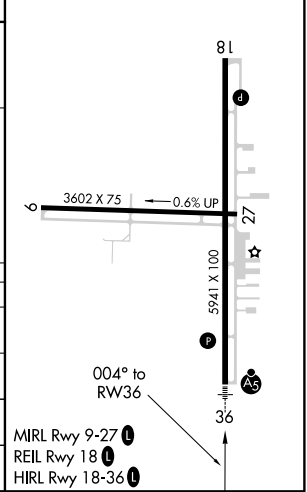
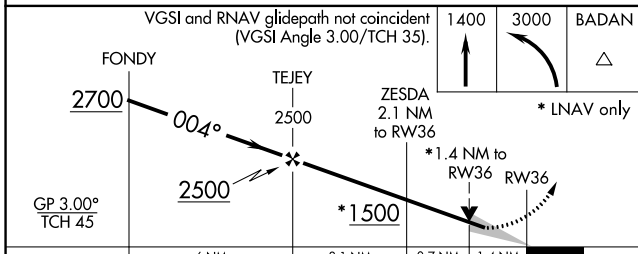
ASOS 134.0	MILWAUKEE APP CON 127.0 263.075	UNICOM 123.05 (CTAF) 0
----------------------	---	----------------------------------



EC-3, 28 MAR 2019 to 25 APR 2019

EC-3, 28 MAR 2019 to 25 APR 2019

ELEV 808	TDZE 795
----------	----------



CATEGORY	A	B	C	D
LPV DA	1171-¾		376 (400-¾)	
LNAV/VNAV DA	1229-1		434 (500-1)	
LNAV MDA	1280-¾ 485 (500-¾)		1280-1 485 (500-1)	
C CIRCLING	1400-1 592 (600-1)		1520-2 712 (800-2) 1520-2¼ 712 (800-2¼)	