

WAAS CH <b>53304</b> <b>W01A</b>	APP CRS <b>010°</b>	Rwy ldg <b>5010</b> TDZE <b>979</b> Apt Elev <b>979</b>
--	------------------------	---

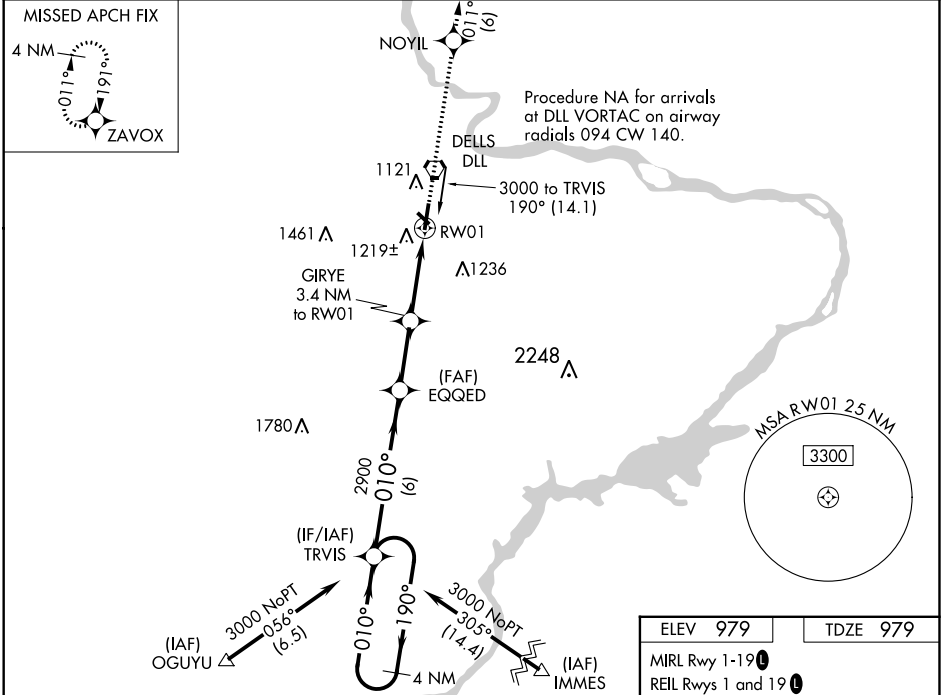
# RNAV (GPS) RWY 1

BARABOO-WISCONSIN DELLS RGNL (DLL)

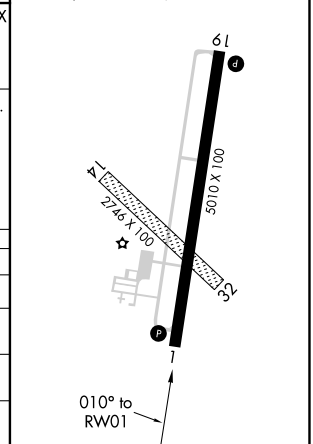
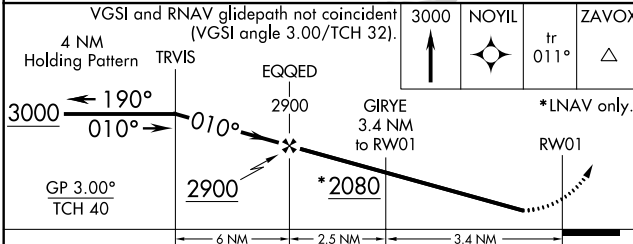
**▼** Baro-VNAV NA when using Lone Rock altimeter setting. For uncompensated Baro-VNAV systems, LNAV/VNAV NA below -22°C (-7°F) or above 54°C (130°F). DME/DME RNP-0.3 NA. When local altimeter setting not received, use Lone Rock altimeter setting and increase all DA 97 feet/MDA 100 feet. Increase LPV all Cats visibility 1/8 mile, LNAV/VNAV all Cats visibility 3/8 mile, LNAV Cat C visibility 3/8 mile, and Circling Cat C visibility 1/2 mile. Circling NA to Rwy 14-32. Rwy 1 helicopter visibility reduction below 3/4 SM NA.

**MISSED APPROACH:** Climb to 3000 direct NOYIL and on track 011° to ZAVOX and hold.

AWOS-3 <b>118.325</b>	MADISON APP CON★ <b>135.45 343.7</b>	UNICOM <b>123.05 (CTAF)</b>
--------------------------	---	--------------------------------



ELEV 979	TDZE 979
MIRL Rwy 1-19	REIL Rws 1 and 19



CATEGORY	A	B	C	D
LPV DA	1229-1 250 (300-1)			NA
LNAV/VNAV DA	1391-1 3/8 412 (500-1 3/8)			NA
LNAV MDA	1480-1 501 (600-1)		1480-1 3/8 501 (600-1 3/8)	NA
CIRCLING	1540-1 560 (600-1)		1560-1 1/2 580 (600-1 1/2)	NA

EC-3, 28 MAR 2019 to 25 APR 2019

EC-3, 28 MAR 2019 to 25 APR 2019